



COPARN
Container Announcement Message

UN/EDIFACT Version D Release 03A

Message Implementation Guide

1. INTRODUCTION

This specification is the guideline for reporting of empty release orders from Hamburg Süd to a depot or vendor via Electronic Data Interchange.

The paper is intended for business and technical personal engaged in establishing an EDI connection with Hamburg Süd.

Any remarks, comments or questions can be addressed to Hamburg Süd as follows:

Message layout and contents: ITS-DD-CLO-EQUIPMENT-RE@hamburgsud.com

Communication set up and administration: HAM-EDITeam-REU@hamburgsud.com

EDI/EAI Group
Department ITO-B
Hamburg Süd
Willy-Brandt-Str. 59-61
20457 HAMBURG
GERMANY

2. STATUS INDICATORS AND USAGE INDICATORS

Status Indicators

Status Indicators (“M” and “C”) form part of the EDIFACT standard and indicate a minimum requirement to fulfill the needs of the message structure. They are not adequate for implementation purposes. The Status Indicators are:

| Value | Description |
|--------------|--|
| M | Mandatory The entity marked as such must appear in all messages, and apply to these messages as well as to any associated implementation guidelines (and consequently is also a Usage Indicator). |
| C | Conditional The entity is used by agreement between trading partners |

Usage Indicators

Usage Indicators are implementation–related indicators that further detail the use of “Conditional” Status Indicators. Usage Indicators are applied at all levels of the guidelines and shown adjacent to data items such as segment groups, segments, composite data elements and simple data elements. They dictate the agreed usage of the data items or entities. The Usage Indicators are:

| Value | Description |
|--------------|---|
| M | Mandatory Indicates the item is mandatory in the UN/EDIFACT message. |
| R | Required Indicates the item must be transmitted in this implementation. |
| D | Dependent Indicates that the use of the item is depending on a well-defined condition or set of conditions. These conditions must be clearly specified in the relevant implementation guideline. |
| O | Optional Indicates that this item is at the need or discretion of both trading partners. |
| X | Not Used Indicates that this item is not used in this implementation. If present, it will be disregarded. |

Where an item within a segment group, segment or composite data element is marked with Usage Indicators “M” or “R”, but the segment group, segment or composite data element has been marked “O” or “D” (or for that matter “X”), the item is only to be transmitted when the segment group, segment or composite of which it is a part, is used.

3. CHANGE HISTORY

| Version | Date | Comment |
|---------|-------------|--|
| 1.0 | 30-Jun-2017 | Initial Version |
| 1.1 | 04-Jul-2017 | <ul style="list-style-type: none">- Replace NAD e3035 qualifier "CK" with "GA"- Replace DTM e2005 qualifiers "469" and "472" with "201" and "400"- Reviewed example messages |

COPARN Container Announcement Message

Introduction:

The message contains an order to release, to make available, to accept or to call down containers or to announce the impending arrival of containers.

This message is part of a total set of container-related messages. These messages serve to facilitate the intermodal handling of containers by streamlining the information exchange. The business scenario for the container messages is clarified in a separate document, called: 'Guide to the scenario of EDIFACT container messages'.

The order may pertain to cargo related containers (full container load and less than container load), the arrangement of empty containers prior to loading and after stripping, as well as the arrangements for leasing the empty containers (on- hire and off-hire of containers).

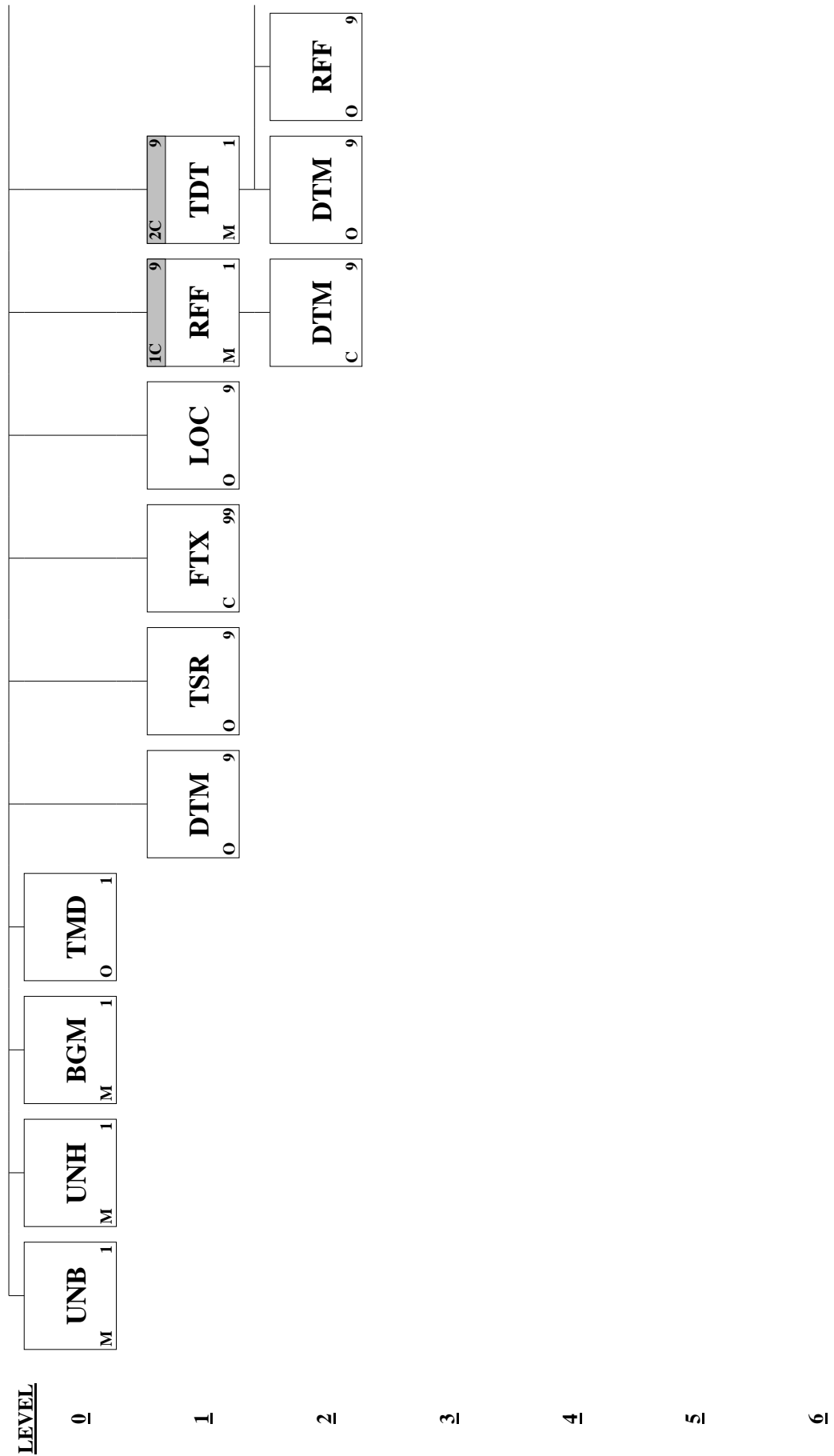
| | <u>Pos. No.</u> | <u>Seg. ID</u> | <u>Name</u> | <u>Req. Des.</u> | <u>Max.Use</u> | <u>Group Repeat</u> | <u>Notes and Comments</u> |
|---|-----------------|----------------|---|------------------|----------------|---------------------|---------------------------|
| M | 0005 | UNB | Interchange Header | M | 1 | | |
| M | 0010 | UNH | Message Header | M | 1 | | |
| M | 0020 | BGM | Beginning of Message | M | 1 | | |
| X | 0030 | TMD | Transport Movement Details | O | 1 | | |
| | 0040 | DTM | Date/Time/Period | O | 9 | | |
| X | 0050 | TSR | Transport Service Requirements | O | 9 | | |
| | 0060 | FTX | Free Text | C | 99 | | |
| | 0070 | LOC | Place/Location Identification | O | 9 | | |
| | 0080 | | Segment Group 1: RFF-DTM | C | | 9 | |
| M | 0090 | RFF | Reference | M | 1 | | |
| X | 0100 | DTM | Date/Time/Period | C | 9 | | |
| | 0110 | | Segment Group 2: TDT-DTM-RFF-SG3 | C | | 9 | |
| M | 0120 | TDT | Transport Information | M | 1 | | |
| X | 0130 | DTM | Date/Time/Period | O | 9 | | |
| | 0140 | RFF | Reference | O | 9 | | |
| | 0150 | | Segment Group 3: LOC-DTM | C | | 9 | |
| M | 0160 | LOC | Place/Location Identification | M | 1 | | |
| X | 0170 | DTM | Date/Time/Period | O | 9 | | |
| | 0180 | | Segment Group 4: NAD-SG5-RFF-DTM | M | | 9 | |
| M | 0190 | NAD | Name and Address | M | 1 | | |
| X | 0200 | | Segment Group 5: CTA-COM | C | | 9 | |
| X | 0210 | CTA | Contact Information | M | 1 | | |
| X | 0220 | COM | Communication Contact | C | 9 | | |
| X | 0230 | RFF | Reference | O | 9 | | |
| X | 0240 | DTM | Date/Time/Period | O | 9 | | |
| X | 0250 | | Segment Group 6: GID-HAN-FTX-RFF-PIA-SG7-MEA-DIM-SG 8-SG9-SG10-SG12 | C | | 999 | |
| X | 0260 | GID | Goods Item Details | M | 1 | | |
| X | 0270 | HAN | Handling Instructions | C | 9 | | |
| X | 0280 | FTX | Free Text | C | 9 | | |
| X | 0290 | RFF | Reference | C | 9 | | |
| X | 0300 | PIA | Additional Product Id | C | 9 | | |
| X | 0310 | | Segment Group 7: NAD-DTM-RFF | C | | 99 | |
| X | 0320 | NAD | Name and Address | M | 1 | | |

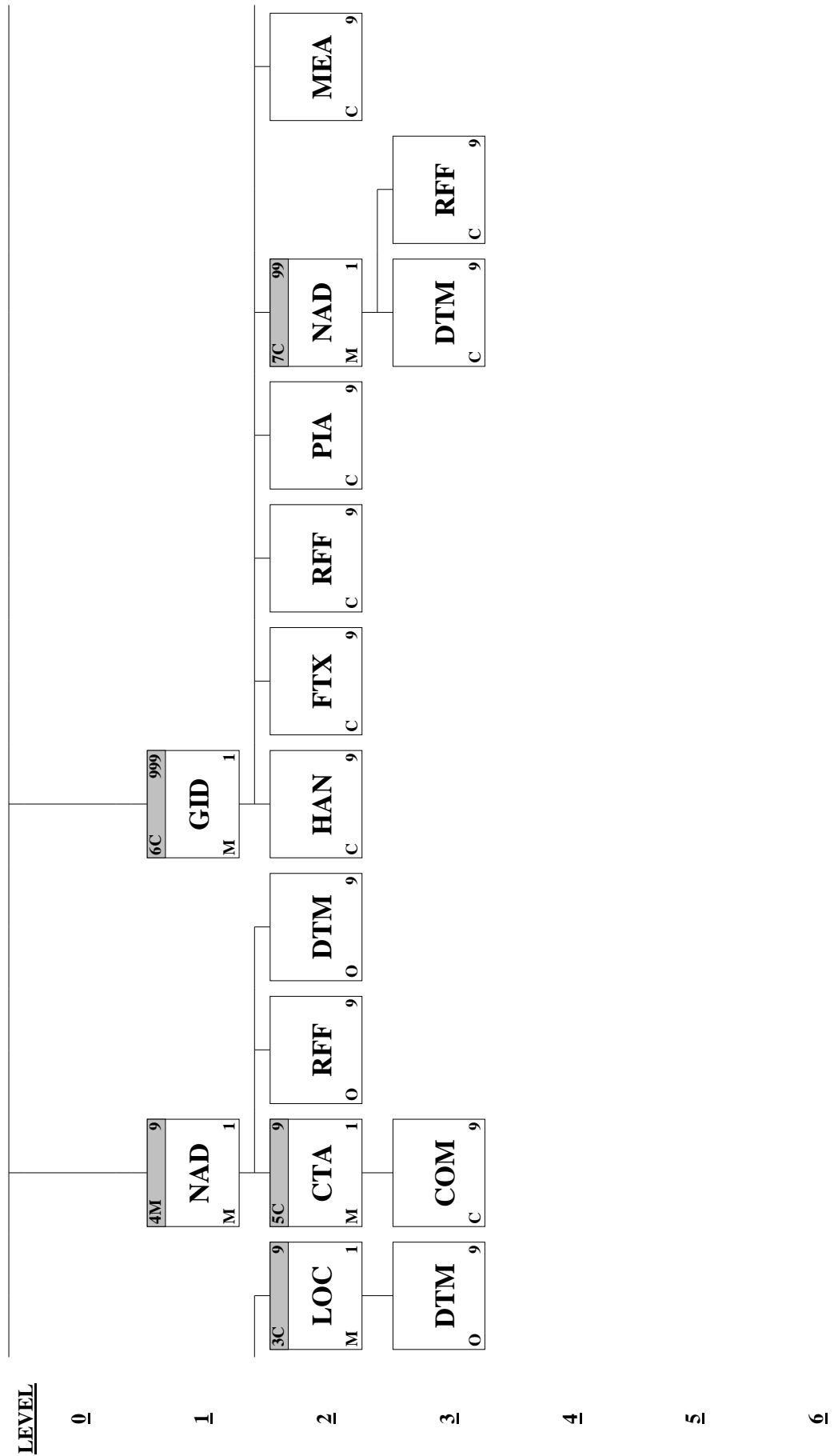
HAMBURG SÜD

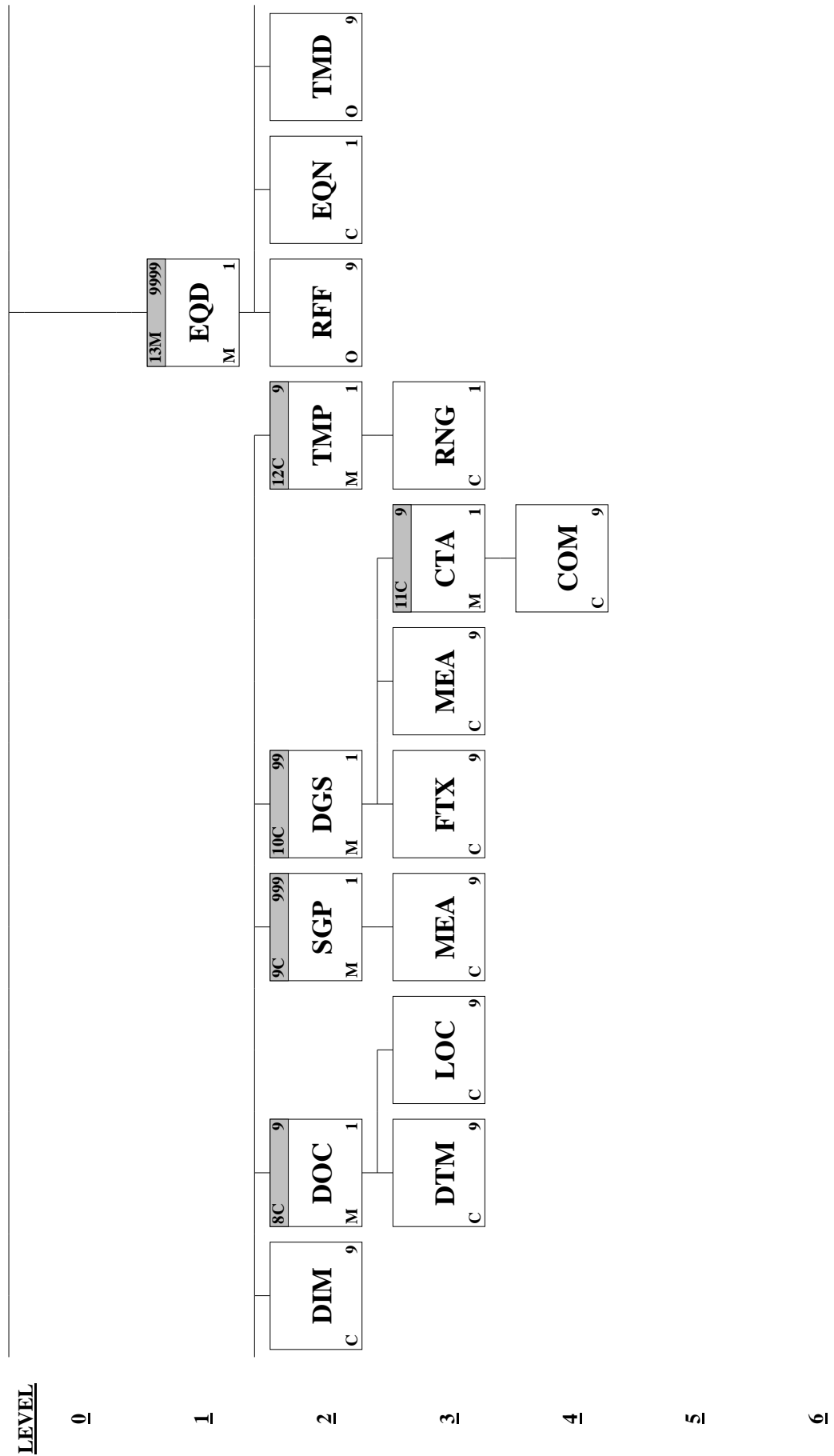
| | | | | | |
|---|------|-----|---|---|------|
| X | 0330 | DTM | Date/Time/Period | C | 9 |
| X | 0340 | RFF | Reference | C | 9 |
| X | 0350 | MEA | Measurements | C | 9 |
| X | 0360 | DIM | Dimensions | C | 9 |
| X | 0370 | | Segment Group 8: DOC-DTM-LOC | C | 9 |
| X | 0380 | DOC | Document/Message Details | M | 1 |
| X | 0390 | DTM | Date/Time/Period | C | 9 |
| X | 0400 | LOC | Place/Location Identification | C | 9 |
| X | 0410 | | Segment Group 9: SGP-MEA | C | 999 |
| X | 0420 | SGP | Split Goods Placement | M | 1 |
| X | 0430 | MEA | Measurements | C | 9 |
| X | 0440 | | Segment Group 10: DGS-FTX-MEA-SG11 | C | 99 |
| X | 0450 | DGS | Dangerous Goods | M | 1 |
| X | 0460 | FTX | Free Text | C | 9 |
| X | 0470 | MEA | Measurements | C | 9 |
| X | 0480 | | Segment Group 11: CTA-COM | C | 9 |
| X | 0490 | CTA | Contact Information | M | 1 |
| X | 0500 | COM | Communication Contact | C | 9 |
| X | 0510 | | Segment Group 12: TMP-RNG | C | 9 |
| X | 0520 | TMP | Temperature | M | 1 |
| X | 0530 | RNG | Range Details | C | 1 |
| M | 0540 | | Segment Group 13: EQD-RFF-EQN-TMD-DTM-TSR-LOC-MEA- DIM-SG14-SEL-FTX-PCD-SG15-MOA-GOR- EQA-COD-HAN-SG17-SG18-SG20 | M | 9999 |
| M | 0550 | EQD | Equipment Details | M | 1 |
| X | 0560 | RFF | Reference | O | 9 |
| | 0570 | EQN | Number of Units | C | 1 |
| X | 0580 | TMD | Transport Movement Details | O | 9 |
| | 0590 | DTM | Date/Time/Period | C | 9 |
| X | 0600 | TSR | Transport Service Requirements | O | 9 |
| X | 0610 | LOC | Place/Location Identification | O | 9 |
| | 0620 | MEA | Measurements | C | 9 |
| | 0630 | DIM | Dimensions | C | 9 |
| | 0640 | | Segment Group 14: TMP-RNG | C | 9 |
| M | 0650 | TMP | Temperature | M | 1 |
| X | 0660 | RNG | Range Details | O | 1 |
| X | 0670 | SEL | Seal Number | O | 9 |
| | 0680 | FTX | Free Text | C | 9 |
| X | 0690 | PCD | Percentage Details | O | 9 |
| | 0700 | | Segment Group 15: DGS-FTX-MEA-SG16 | C | 99 |
| M | 0710 | DGS | Dangerous Goods | M | 1 |
| | 0720 | FTX | Free Text | C | 9 |
| X | 0730 | MEA | Measurements | O | 9 |
| X | 0740 | | Segment Group 16: CTA-COM | C | 9 |
| X | 0750 | CTA | Contact Information | M | 1 |
| X | 0760 | COM | Communication Contact | C | 9 |
| X | 0770 | MOA | Monetary Amount | O | 9 |
| X | 0780 | GOR | Governmental Requirements | O | 9 |
| | 0790 | EQA | Attached Equipment | C | 1 |

HAMBURG SÜD

| | | | | | |
|---|------|-----|--|---|---|
| X | 0800 | COD | Component Details | O | 1 |
| | 0810 | HAN | Handling Instructions | C | 9 |
| X | 0820 | | Segment Group 17: DAM-COD | O | 9 |
| X | 0830 | DAM | Damage | M | 1 |
| X | 0840 | COD | Component Details | C | 1 |
| X | 0850 | | Segment Group 18: TDT-DTM-SG19 | O | 9 |
| X | 0860 | TDT | Transport Information | M | 1 |
| X | 0870 | DTM | Date/Time/Period | C | 9 |
| X | 0880 | | Segment Group 19: LOC-DTM | C | 9 |
| X | 0890 | LOC | Place/Location Identification | M | 1 |
| X | 0900 | DTM | Date/Time/Period | C | 9 |
| | 0910 | | Segment Group 20: NAD-DTM-CTA-COM-RFF | O | 9 |
| | 0920 | NAD | Name and Address | M | 1 |
| X | 0930 | DTM | Date/Time/Period | C | 1 |
| X | 0940 | CTA | Contact Information | C | 1 |
| X | 0950 | COM | Communication Contact | C | 1 |
| X | 0960 | RFF | Reference | C | 9 |
| X | 0970 | CNT | Control Total | O | 1 |
| M | 0980 | UNT | Message Trailer | M | 1 |
| M | 0990 | UNZ | Interchange Trailer | M | 1 |







LEVEL

0

1

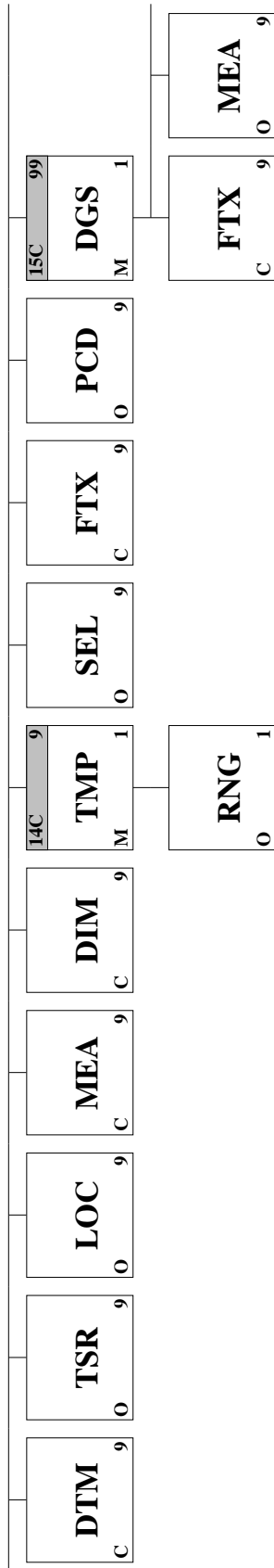
2

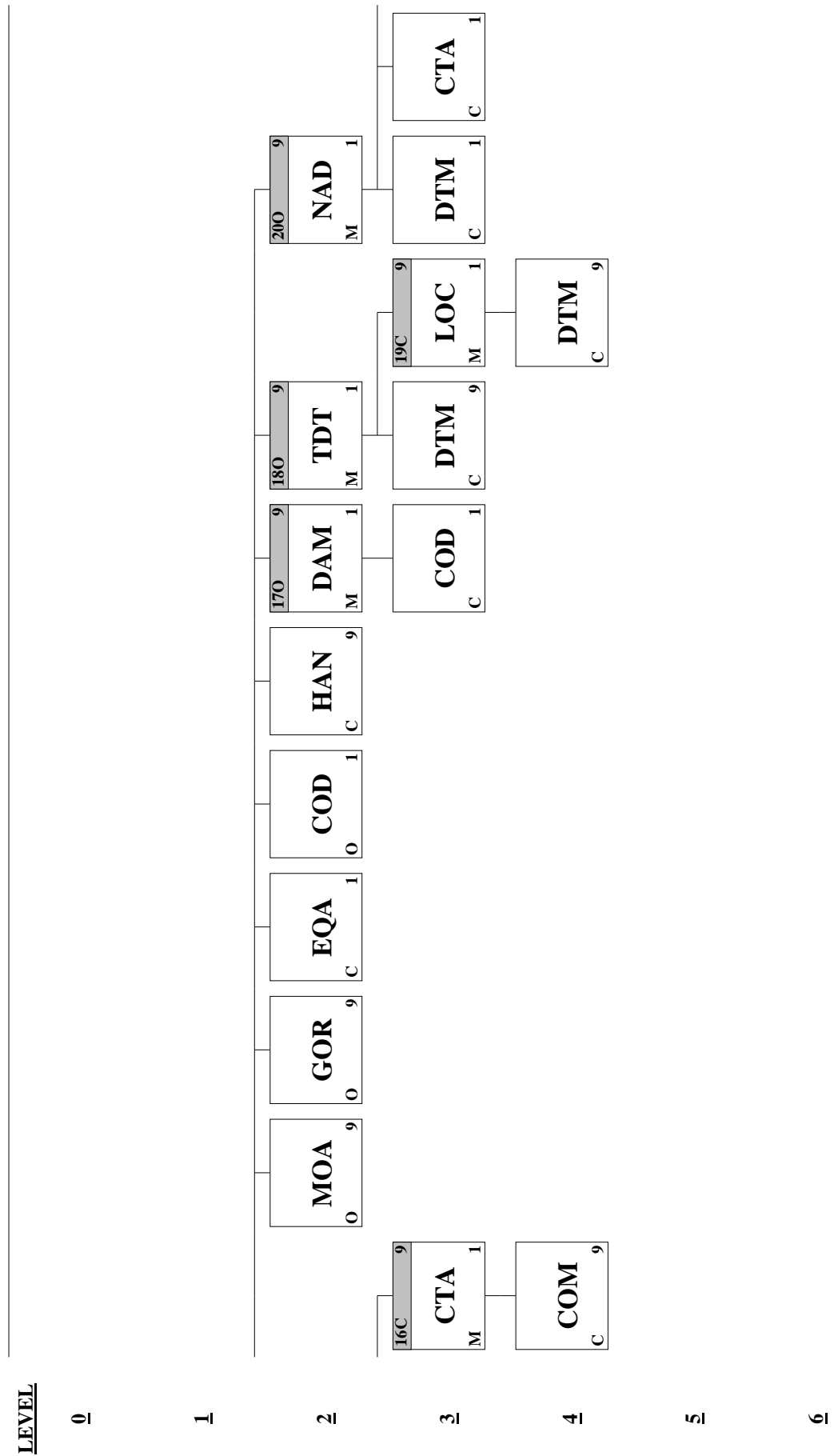
3

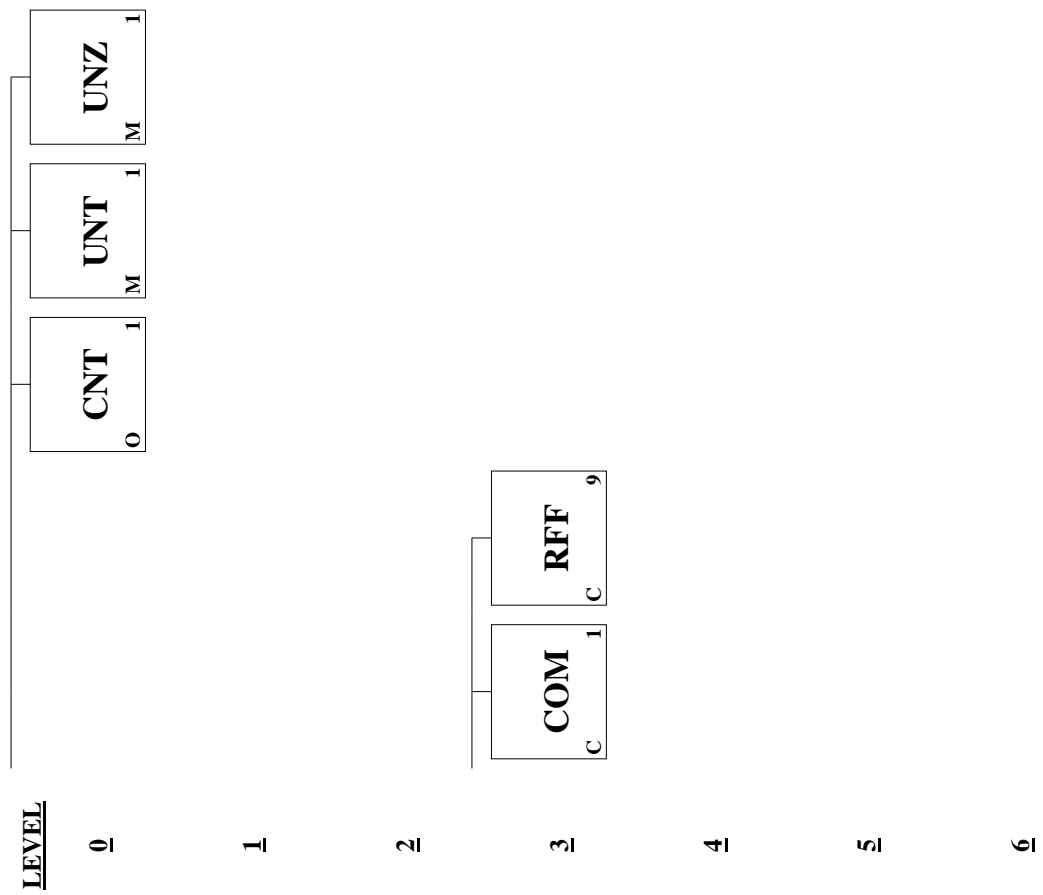
4

5

6







Segment: UNB Interchange Header
Position: 0005
Group:
Level: 0
Usage: Mandatory
Max Use: 1
Purpose: To start, identify and specify an interchange
Comments: Rules and Conditions

Standard values to be used, unless mutually agreed otherwise:
 Syntax identifier: 'UNOA'
 Syntax version: '2'
 Sender identification: 'HSD' (for Hamburg Süd)
 Recipient identification: to be mutually agreed

The sender and recipient identification should be between 3 and 20 characters long.

Example Syntax:

UNB+UNOA:2+HSD+RECIPIENT_ID+170608:1124+4711'

Data Element Summary

| <u>Attributes</u> | <u>Data Element</u> | <u>Component Element</u> | <u>Name</u> | | |
|-------------------|---------------------|--------------------------|--|---|--------|
| M | S001 | | SYNTAX IDENTIFIER | M | 1 |
| | | | Identification of the agency controlling the syntax and indication of syntax level. | | |
| M | | 0001 | Syntax identifier | M | a4 |
| | | | Coded identification of the agency controlling a syntax and syntax level used in an interchange. | | |
| | | | UNOA UN/ECE level A | | |
| | | | Characters as defined in ISO 646 (US-ASCII), but only upper case letters allowed. | | |
| M | | 0002 | Syntax version number | M | n1 |
| | | | Version number of the syntax identified in the syntax identifier (0001). | | |
| | | | 2 Version 2, ISO 9735:1990. | | |
| M | S002 | | INTERCHANGE SENDER | M | 1 |
| | | | Identification of the sender of the interchange. | | |
| M | | 0004 | Sender identification | M | an..35 |
| | | | Name or coded representation of the sender of a data interchange. | | |
| | | | Hamburg Süd sender identification | | |
| | | 0007 | Partner identification code qualifier | X | an..4 |
| | | | Qualifier referring to the source of codes for the identifiers of interchanging partners. | | |
| | | 0008 | Address for reverse routing | X | an..14 |
| | | | Address specified by the sender of an interchange to be included by the recipient in the response interchanges to facilitate internal routing. | | |
| M | S003 | | INTERCHANGE RECIPIENT | M | 1 |
| | | | Identification of the recipient of the interchange. | | |
| M | | 0010 | Recipient identification | M | an..35 |
| | | | Name or coded representation of the recipient of a data interchange. | | |
| | | | Partner recipient identification | | |
| | | 0007 | Partner identification code qualifier | X | an..4 |
| | | | Qualifier referring to the source of codes for the identifiers of interchanging partners. | | |
| | | 0014 | Routing address | X | an..14 |

| | | | | | |
|---|------|------|---|---|----------|
| | | | Address specified by the recipient of an interchange to be included by the sender and used by the recipient for routing of received interchanges inside his organization. | | |
| M | S004 | | DATE AND TIME OF PREPARATION | M | 1 |
| | | | Date and time of preparation of the interchange. | | |
| M | | 0017 | Date of preparation | M | n6 |
| | | | Local date when an interchange or a functional group was prepared. To be reported as YYMMDD. | | |
| M | | 0019 | Time of preparation | M | n4 |
| | | | Local time of day when an interchange or a functional group was prepared. To be reported as HHMM. | | |
| M | 0020 | | INTERCHANGE CONTROL REFERENCE | M | 1 an..14 |
| | | | Unique reference assigned by the sender to an interchange. The UNB and UNZ interchange control references must be identical. The reference will be unique per interchange partner. | | |
| | S005 | | RECIPIENTS REFERENCE PASSWORD | X | 1 |
| | | | Reference or password as agreed between the communicating partners. | | |
| M | | 0022 | Recipient reference/password | X | an..14 |
| | | | Unique reference assigned by the recipient to the data interchange or a password to the recipient's system or to a third party network as specified in the partners interchange agreement. | | |
| | | 0025 | Recipient reference/password qualifier | X | an2 |
| | | | Qualifier for the recipient's reference or password. | | |
| | | 0026 | APPLICATION REFERENCE | X | 1 an..14 |
| | | | Identification of the application area assigned by the sender, to which the messages in the interchange relate e.g. the message identifier if all the messages in the interchange are of the same type. | | |
| | | 0029 | PROCESSING PRIORITY CODE | X | 1 a1 |
| | | | Code determined by the sender requesting processing priority for the interchange. | | |
| | | 0031 | ACKNOWLEDGEMENT REQUEST | X | 1 n1 |
| | | | Code determined by the sender for acknowledgement of the interchange. | | |
| | | 0032 | COMMUNICATIONS AGREEMENT ID | X | 1 an..35 |
| | | | Identification by name or code of the type of agreement under which the interchange takes place. | | |
| | | 0035 | TEST INDICATOR | X | 1 n1 |
| | | | Indication that the interchange is a test. | | |

Segment: UNH Message Header
Position: 0010
Group:
Level: 0
Usage: Mandatory
Max Use: 1
Purpose: A service segment starting and uniquely identifying a message. The message type code for the Container announcement message is COPARN.
 Note: Container announcement messages conforming to this document must contain the following data in segment UNH, composite S009:
 Data element 0065 COPARN 0052 D 0054 03A
 0051 UN

Comments: Example Syntax:
 UNH+4711+COPARN:D:03A:UN'

Data Element Summary

| <u>Attributes</u> | <u>Data Element</u> | <u>Component Element</u> | <u>Name</u> | | | |
|-------------------|---------------------|--------------------------|---|---|---|--------|
| M | 0062 | | MESSAGE REFERENCE NUMBER | M | 1 | an..14 |
| | | | Unique message reference assigned by the sender. | | | |
| | | | The UNH and UNT message reference numbers must be identical. | | | |
| | | | The UNH message reference number must be unique per interchange if multiple messages are being sent within the same interchange. | | | |
| M | S009 | | MESSAGE IDENTIFIER | M | 1 | |
| | | | Identification of the type, version etc. of the message being interchanged. | | | |
| M | | 0065 | Message type identifier | M | | an..6 |
| | | | Code identifying a type of message and assigned by its controlling agency. | | | |
| | | | COPARN Container announcement message | | | |
| M | | 0052 | Message type version number | M | | an..3 |
| | | | Version number of a message type. | | | |
| | | | D Draft version/UN/EDIFACT Directory | | | |
| M | | 0054 | Message type release number | M | | an..3 |
| | | | Release number within the current message type version number (0052). | | | |
| | | | 03A Release 2003 - A | | | |
| M | | 0051 | Controlling agency | M | | an..2 |
| | | | Code identifying the agency controlling the specification, maintenance and publication of the message type. | | | |
| | | | UN UN/CEFACT | | | |
| | | 0057 | Association assigned code | X | | an..6 |
| | | | Code, assigned by the association responsible for the design and maintenance of the message type concerned, which further identifies the message. | | | |
| | 0068 | | COMMON ACCESS REFERENCE | X | 1 | an..35 |
| | | | Reference serving as a key to relate all subsequent transfers of data to the same business case or file. | | | |
| | S010 | | STATUS OF THE TRANSFER | X | 1 | |
| | | | Statement that the message is one in a sequence of transfers relating to the same topic. | | | |
| M | | 0070 | Sequence message transfer number | X | | n..2 |
| | | | Number assigned by the sender indicating that the message is an addition or change of a previously sent message relating to the same topic. | | | |
| | | 0073 | First/last sequence message transfer indication | X | | a1 |
| | | | Indication used for the first and last message in a sequence of the same type of message relating to the same topic. | | | |

Segment: **BGM** Beginning of Message
Position: 0020
Group:
Level: 0
Usage: Mandatory
Max Use: 1
Purpose: A segment to indicate the beginning of a message and to transmit identifying number and the further specification of the message type (in data element 1001: Document name code).

Comments: Rules and Conditions

The document identifier will be a concatenation of the release order reference and the timestamp of message creation. It will be referred to in update and cancellation messages as "Previous message number".

Example Syntax

BGM+108+7HKG0000011706081038+9+AB' (for a new release order original)
 BGM+108+7HKG0000011706081038+5+AB' (for a replacement of a previous release order)
 BGM+108+7HKG0000011706081038+1+AB' (for a cancellation of a previous release order)

Data Element Summary

| <u>Attributes</u> | <u>Data Element</u> | <u>Component Element</u> | <u>Name</u> | | |
|-------------------|---------------------|--------------------------|--|---|---------|
| M | C002 | | DOCUMENT/MESSAGE NAME | M | 1 |
| | | | Identification of a type of document/message by code or name. Code preferred. | | |
| M | | 1001 | Document name code | M | an..3 |
| | | | Code specifying the document name. | | |
| | | 108 | Transport equipment empty release instruction | | |
| | | | Instruction to release an item of empty transport equipment to a specified party or parties. | | |
| | | 1131 | Code list identification code | X | an..17 |
| | | | Code identifying a user or association maintained code list. | | |
| | | 3055 | Code list responsible agency code | X | an..3 |
| | | | Code specifying the agency responsible for a code list. | | |
| | | 1000 | Document name | X | an..35 |
| | | | Name of a document. | | |
| | C106 | | DOCUMENT/MESSAGE IDENTIFICATION | C | 1 |
| | | | Identification of a document/message by its number and eventually its version or revision. | | |
| M | | 1004 | Document identifier | M | an..35 |
| | | | To identify a document. | | |
| | | | Document reference number | | |
| | | 1056 | Version identifier | X | an..9 |
| | | | To identify a version. | | |
| | | 1060 | Revision identifier | X | an..6 |
| | | | To identify a revision. | | |
| | 1225 | | MESSAGE FUNCTION CODE | C | 1 an..3 |
| | | | Code indicating the function of the message. | | |
| | | 1 | Cancellation | | |
| | | | Message cancelling a previous transmission for a given transaction. | | |

| | | | | |
|------|---------------------------|--|----------|----------------|
| | 5 | Replace | | |
| | | Message replacing a previous message. | | |
| | 9 | Original | | |
| | | Initial transmission related to a given transaction. | | |
| 4343 | RESPONSE TYPE CODE | | C | 1 an..3 |
| | | Code specifying the type of acknowledgment required or transmitted. | | |
| | AB | Message acknowledgement | | |
| | | Indicates that an acknowledgement relating to receipt of message is required. The exchange of acknowledgment messages (CONTRL) can be negotiated on mutual basis, if required. | | |

Segment: **DTM** Date/Time/Period
Position: 0040
Group:
Level: 0
Usage: Conditional (Optional)
Max Use: 9
Purpose: A segment to indicate a date and time applying the message as a whole.
Comments: Rules and Conditions

Indication of the expiration date for the release order. The receiving depot is asked to not release any empty equipment under the respective release reference after this date.

Example Syntax
 DTM+36:20170710:102'

Data Element Summary

| <u>Attributes</u> | <u>Data Element</u> | <u>Component Element</u> | <u>Name</u> | | |
|-------------------|---------------------|--------------------------|--|---|--------|
| M | C507 | | DATE/TIME/PERIOD | M | 1 |
| | | | Date and/or time, or period relevant to the specified date/time/period type. | | |
| M | | 2005 | Date or time or period function code qualifier | M | an..3 |
| | | | Code qualifying the function of a date, time or period. | | |
| | | 36 | Expiry date | | |
| | | 2380 | Date or time or period text | C | an..35 |
| | | | The value of a date, a date and time, a time or of a period in a specified representation. | | |
| | | 2379 | Date or time or period format code | C | an..3 |
| | | | Code specifying the representation of a date, time or period. | | |
| | | 102 | CCYYMMDD | | |

Segment: **FTX** Free Text
Position: 0060
Group:
Level: 1
Usage: Conditional (Optional)
Max Use: 99
Purpose: A segment to specify free form or processable supplementary information.
Comments: Rules and Conditions
 Used to transmit information related to the whole message.
 Example Syntax
 FTX+CUR+++ANY FREE REMARK'

Data Element Summary

| <u>Attributes</u> | <u>Data Element</u> | <u>Component Element</u> | <u>Name</u> | | | |
|-------------------|---------------------|--------------------------|--|---|---|---------|
| M | 4451 | | TEXT SUBJECT CODE QUALIFIER Code qualifying the subject of the text. | M | 1 | an..3 |
| | | CUR | Customer remarks | | | |
| | 4453 | | FREE TEXT FUNCTION CODE Code specifying the function of free text. | X | 1 | an..3 |
| | C107 | | TEXT REFERENCE Coded reference to a standard text and its source. | X | 1 | |
| M | | 4441 | Free text description code Code specifying free form text. | X | | an..17 |
| | | 1131 | Code list identification code Code identifying a user or association maintained code list. | X | | an..17 |
| | | 3055 | Code list responsible agency code Code specifying the agency responsible for a code list. | X | | an..3 |
| | C108 | | TEXT LITERAL Free text; one to five lines. | C | 1 | |
| M | | 4440 | Free text Free form text. | M | | an..512 |
| | | 4440 | Free text Free form text. | X | | an..512 |
| | | 4440 | Free text Free form text. | X | | an..512 |
| | | 4440 | Free text Free form text. | X | | an..512 |
| | | 4440 | Free text Free form text. | X | | an..512 |
| | 3453 | | LANGUAGE NAME CODE Code specifying the language name. | X | 1 | an..3 |
| | 4447 | | FREE TEXT FORMAT CODE Code specifying the format of free text. | X | 1 | an..3 |

Segment: **LOC** Place/Location Identification
Position: 0070
Group:
Level: 1
Usage: Conditional (Optional)
Max Use: 9
Purpose: A segment to identify a location applying to the entire message.
Comments: Rules and Conditions
 Hamburg Süd will provide here the empty pick-up depot valid for the entire order.
 Example Syntax
 LOC+98+AUSYD:139:6+AUSYDPACL:5:ZZZ:PATRICK CARGO LINK SYDNEY'

Data Element Summary

| <u>Attributes</u> | <u>Data Element</u> | <u>Component Element</u> | <u>Name</u> | | | |
|-------------------|---------------------|--------------------------|--|---|---|---------|
| M | 3227 | | LOCATION FUNCTION CODE QUALIFIER Code identifying the function of a location. 98 Place of empty equipment despatch | M | 1 | an..3 |
| | C517 | | LOCATION IDENTIFICATION Identification of a location by code or name. | C | 1 | |
| | | 3225 | Location name code Code specifying the name of the location. UNLOCODE of the location | C | | an..35 |
| | | 1131 | Code list identification code Code identifying a user or association maintained code list. 139 Port | C | | an..17 |
| | | 3055 | Code list responsible agency code Code specifying the agency responsible for a code list. 6 UNECE (United Nations - Economic Commission for Europe) | C | | an..3 |
| | | 3224 | Location name Name of the location. | X | | an..256 |
| | C519 | | RELATED LOCATION ONE IDENTIFICATION Identification the first related location by code or name. | C | 1 | |
| | | 3223 | First related location name code Code specifying first related location. Hamburg Süd internal facility code. | C | | an..25 |
| | | 1131 | Code list identification code Code identifying a user or association maintained code list. 5 Facility identification | C | | an..17 |
| | | 3055 | Code list responsible agency code Code specifying the agency responsible for a code list. ZZZ Mutually defined | C | | an..3 |
| | | 3222 | First related location name Name of first related location. Empty pick up depot name | C | | an..70 |
| | C553 | | RELATED LOCATION TWO IDENTIFICATION Identification of second related location by code or name. | X | 1 | |
| | | 3233 | Second related location name code | X | | an..25 |

| | | | | |
|-------------|-------------|--|----------|----------------|
| | | Code specifying the second related location. | | |
| | 1131 | Code list identification code | X | an..17 |
| | | Code identifying a user or association maintained code list. | | |
| | 3055 | Code list responsible agency code | X | an..3 |
| | | Code specifying the agency responsible for a code list. | | |
| | 3232 | Second related location name | X | an..70 |
| | | Name of the second related location. | | |
| 5479 | | RELATION CODE | X | 1 an..3 |
| | | Code specifying a relation. | | |

Group: **RFF** Segment Group 1: Reference
Position: 0080
Group:
Level: 1
Usage: Conditional (Optional)
Max Use: 9
Purpose: A group of segments to specify a reference relating to the whole message, and its date and/or time.

Segment Summary

| | Pos. | Seg. | | Req. | Max. | Group: |
|---|-------------------|------------------|--------------------|--------------------|-------------------|----------------------|
| | <u>No.</u> | <u>ID</u> | <u>Name</u> | <u>Des.</u> | <u>Use</u> | <u>Repeat</u> |
| M | 0090 | RFF | Reference | M | | 1 |

Segment: **RFF Reference**
Position: 0090 (Trigger Segment)
Group: Segment Group 1 (Reference) Conditional (Optional)
Level: 1
Usage: Mandatory
Max Use: 1
Purpose: A segment to express a reference which applies to the entire message.
Comments: Rules and Conditions

A valid release order message will always hold an identifying release order reference (booking number). The release order reference at Hamburg Süd is not globally unique, but only unique in combination with the pickup facility (see LOC+98). Replacement and cancellation messages will furthermore always contain a "previous message number" which relate to the document message number (BGM.1004) of the previous message version.

Example Syntax

RFF+BN:7HKG000001'
RFF+ACW:7HKG0000011706070833'

Data Element Summary

| <u>Attributes</u> | <u>Data Element</u> | <u>Component Element</u> | <u>Name</u> | | |
|-------------------|---------------------|--------------------------|---|---|--------|
| M | C506 | | REFERENCE Identification of a reference. | M | 1 |
| M | | 1153 | Reference code qualifier Code qualifying a reference. | M | an..3 |
| | | ACW | Reference number to previous message Reference number assigned to the message which was previously issued (e.g. in the case of a cancellation, the primary reference of the message to be cancelled will be quoted in this element). | | |
| | | BN | Booking reference number Reference number assigned by the carrier or his agent when cargo space is reserved prior to loading. Expected to be reported back by the depot with the gate-out empty move. | | |
| | | 1154 | Reference identifier Identifies a reference. | C | an..70 |
| | | 1156 | Document line identifier To identify a line of a document. | X | an..6 |
| | | 4000 | Reference version identifier To identify the version of a reference. | X | an..35 |
| | | 1060 | Revision identifier To identify a revision. | X | an..6 |

Group: **TDT Segment Group 2: Transport Information**
Position: 0110
Group:
Level: 1
Usage: Conditional (Optional)
Max Use: 9
Purpose: A group of segments to indicate details of the movement of containers by sea and by inland carriers, such as mode and means of transport, and locations.
Comments: This segment group can only be provided in case the release is based on an existing customer booking or empty re-positioning of equipment. For all other releases this will be omitted.

Segment Summary

| | Pos. No. | Seg. ID | Name | Req. Des. | Max. Use | Group: Repeat |
|---|---------------------|--------------------|--|----------------------|---------------------|--------------------------|
| M | 0120 | TDT | Transport Information | M | 1 | |
| | 0140 | RFF | Reference | O | 9 | |
| | 0150 | | Segment Group 3: Place/Location Identification | C | 9 | |

| | |
|------------------|--|
| Segment: | TDT Transport Information |
| Position: | 0120 (Trigger Segment) |
| Group: | Segment Group 2 (Transport Information) Conditional (Optional) |
| Level: | 1 |
| Usage: | Mandatory |
| Max Use: | 1 |
| Purpose: | A segment to indicate information related to the main carriage stage of the transport (sea), such as voyage number or indication sea transport, vessel and carrier or liner. |
| Comments: | <p>Rules and Conditions</p> <p>The journey identifier in element 8028 is the operational voyage number and direction assigned by Hamburg Süd. The format is <999X>, a three-digit numerical voyage number followed by one of the directions 'N', 'E', 'S', or 'W'. Voyage numbers smaller than 100 are padded to 3 digits with leading zeroes.</p> <p>The transport means identifier in element 8213 will be reported as Lloyd's (IMO) number.</p> <p>Example Syntax</p> <p>TDT+20+965N+1++HSD:172+++9246310:146:11:BSL LIMASSOL' TDT+20+012S+1++HSD:172+++9246310:146:11:BSL LIMASSOL'</p> |

Data Element Summary

| <u>Attributes</u> | <u>Data Element</u> | <u>Component Element</u> | <u>Name</u> | | | |
|-------------------|---------------------|--------------------------|--|---|---|--------|
| M | 8051 | | TRANSPORT STAGE CODE QUALIFIER | M | 1 | an..3 |
| | | 20 | Main-carriage transport | | | |
| | 8028 | | MEANS OF TRANSPORT JOURNEY IDENTIFIER | C | 1 | an..17 |
| | | | To identify a journey of a means of transport. Hamburg Süd voyage number and direction. | | | |
| | C220 | | MODE OF TRANSPORT | C | 1 | |
| | | | Method of transport code or name. Code preferred. | | | |
| | | 8067 | Transport mode name code | C | | an..3 |
| | | | Code specifying the name of a mode of transport. | | | |
| | | 1 | Maritime | | | |
| | | 8066 | Transport mode name | X | | an..17 |
| | | | Name of a mode of transport. | | | |
| | C001 | | TRANSPORT MEANS | X | 1 | |
| | | | Code and/or name identifying the type of means of transport. | | | |
| | | 8179 | Transport means description code | X | | an..8 |
| | | | Code specifying the means of transport. | | | |
| | | 1131 | Code list identification code | X | | an..17 |
| | | | Code identifying a user or association maintained code list. | | | |
| | | 3055 | Code list responsible agency code | X | | an..3 |
| | | | Code specifying the agency responsible for a code list. | | | |
| | | 8178 | Transport means description | X | | an..17 |
| | | | Free form description of the means of transport. | | | |
| | C040 | | CARRIER | C | 1 | |
| | | | Identification of a carrier by code and/or by name. Code preferred. | | | |
| | | 3127 | Carrier identifier | C | | an..17 |
| | | | To identify a carrier. | | | |

| | | HSD | Hamburg Süd | | |
|----------|-------------|---|-------------|----------|----------------|
| | 1131 | Code list identification code | | C | an..17 |
| | | Code identifying a user or association maintained code list. | | | |
| | | 172 Carriers | | | |
| | 3055 | Code list responsible agency code | | X | an..3 |
| | | Code specifying the agency responsible for a code list. | | | |
| | 3128 | Carrier name | | X | an..35 |
| | | Name of a carrier. | | | |
| | 8101 | TRANSIT DIRECTION INDICATOR CODE | | X | 1 an..3 |
| | | Code specifying the direction of transport. | | | |
| | C401 | EXCESS TRANSPORTATION INFORMATION | | X | 1 |
| | | To provide details of reason for, and responsibility for, use of transportation other than normally utilized. | | | |
| M | 8457 | Excess transportation reason code | | X | an..3 |
| | | Code specifying the reason for excess transportation. | | | |
| M | 8459 | Excess transportation responsibility code | | X | an..3 |
| | | Code specifying the responsibility for excess transportation. | | | |
| | 7130 | Customer shipment authorisation identifier | | X | an..17 |
| | | To identify the authorisation to ship issued by the customer. | | | |
| | C222 | TRANSPORT IDENTIFICATION | | C | 1 |
| | | Code and/or name identifying the means of transport. | | | |
| | 8213 | Transport means identification name identifier | | C | an..9 |
| | | Identifies the name of the transport means. | | | |
| | | Lloyd's (IMO) number | | | |
| | 1131 | Code list identification code | | C | an..17 |
| | | Code identifying a user or association maintained code list. | | | |
| | | 146 Means of transport identification | | | |
| | 3055 | Code list responsible agency code | | C | an..3 |
| | | Code specifying the agency responsible for a code list. | | | |
| | | 11 Lloyd's register of shipping | | | |
| | 8212 | Transport means identification name | | C | an..35 |
| | | Name identifying a means of transport. | | | |
| | | Vessel name (free text) | | | |
| | 8453 | Transport means nationality code | | X | an..3 |
| | | Code specifying the nationality of a means of transport. | | | |
| | 8281 | TRANSPORT MEANS OWNERSHIP INDICATOR CODE | | X | 1 an..3 |
| | | Code indicating the ownership of a means of transport. | | | |

Segment: **RFF Reference**
Position: 0140
Group: Segment Group 2 (Transport Information) Conditional (Optional)
Level: 1
Usage: Optional
Max Use: 9
Purpose: A segment to provide a reference for the liner service.
Comments: Rules and Conditions

For vendor's reference, Hamburg Süd will provide additionally to the TDT information the vessel call sign, and, if applicable and available, an external voyage number for non-HS voyages.

Example Syntax
 RFF+VM:9V2211'
 RFF+VON:ABC123'

Data Element Summary

| <u>Attributes</u> | <u>Data Element</u> | <u>Component Element</u> | <u>Name</u> | | |
|-------------------|---------------------|--------------------------|--|---|--------|
| M | C506 | | REFERENCE Identification of a reference. | M | 1 |
| M | | 1153 | Reference code qualifier Code qualifying a reference. VM Vessel identifier VON Voyage number | M | an..3 |
| | | 1154 | Reference identifier Identifies a reference. | C | an..70 |
| | | 1156 | Document line identifier To identify a line of a document. | X | an..6 |
| | | 4000 | Reference version identifier To identify the version of a reference. | X | an..35 |
| | | 1060 | Revision identifier To identify a revision. | X | an..6 |

Group: **LOC** Segment Group 3: Place/Location Identification
Position: 0150
Group: Segment Group 2 (Transport Information) Conditional (Optional)
Level: 2
Usage: Conditional (Optional)
Max Use: 9
Purpose: A segment group to indicate places and ports corresponding to a transport stage.

Segment Summary

| | Pos. | Seg. | Name | Req. | Max. | Group: |
|---|-------------------|------------------|-------------------------------|--------------------|-------------------|----------------------|
| | <u>No.</u> | <u>ID</u> | <u>Name</u> | <u>Des.</u> | <u>Use</u> | <u>Repeat</u> |
| M | 0160 | LOC | Place/Location Identification | M | 1 | |

Segment: **LOC Place/Location Identification**
Position: 0160 (Trigger Segment)
Group: Segment Group 3 (Place/Location Identification) Conditional (Optional)
Level: 2
Usage: Mandatory
Max Use: 1
Purpose: A segment to specify a location associated with a transport stage such as final port or place of discharge or loading.
Comments: Rules and Conditions

The LOC segment identifies locations (and sub-locations where necessary) associated with the transport chain of the equipment. If available, Hamburg Süd will provide the port of loading incl. the full container terminal at POL, the port of discharge, and the final destination of the cargo.

Example Syntax

LOC+9+AUSYD:139:6+AUSYDDPWT:5:ZZZ:DP WORLD TERMINAL SYDNEY'
 LOC+11+CAVAN:139:6'
 LOC+8+CAVAN:139:6'

Data Element Summary

| <u>Attributes</u> | <u>Data Element</u> | <u>Component Element</u> | <u>Name</u> | | | |
|-------------------|---------------------|--------------------------|---|---|---|---------|
| M | 3227 | | LOCATION FUNCTION CODE QUALIFIER | M | 1 | an..3 |
| | | | Code identifying the function of a location. | | | |
| | | 8 | Place of destination | | | |
| | | 9 | Place/port of loading | | | |
| | | 11 | Place/port of discharge | | | |
| | C517 | | LOCATION IDENTIFICATION | C | 1 | |
| | | | Identification of a location by code or name. | | | |
| | | 3225 | Location name code | C | | an..35 |
| | | | Code specifying the name of the location. | | | |
| | | | UNLOCODE of the location | | | |
| | | 1131 | Code list identification code | C | | an..17 |
| | | | Code identifying a user or association maintained code list. | | | |
| | | 139 | Port | | | |
| | | 3055 | Code list responsible agency code | C | | an..3 |
| | | | Code specifying the agency responsible for a code list. | | | |
| | | 6 | UN/ECE (United Nations - Economic Commission for Europe) | | | |
| | | 3224 | Location name | X | | an..256 |
| | | | Name of the location. | | | |
| | C519 | | RELATED LOCATION ONE IDENTIFICATION | C | 1 | |
| | | | Identification the first related location by code or name. | | | |
| | | 3223 | First related location name code | C | | an..25 |
| | | | Code specifying first related location. | | | |
| | | | Hamburg Süd internal facility code for element 3225 = '9'. | | | |
| | | 1131 | Code list identification code | C | | an..17 |
| | | | Code identifying a user or association maintained code list. | | | |
| | | 5 | Facility identification | | | |
| | | 3055 | Code list responsible agency code | C | | an..3 |
| | | | Code specifying the agency responsible for a code list. | | | |

| | | ZZZ | Mutually defined | | |
|------|------|--|------------------|---|---------|
| | 3222 | First related location name | | C | an..70 |
| | | Name of first related location. | | | |
| | | Contains the POL terminal name for element 3225 = '9'. | | | |
| C553 | | RELATED LOCATION TWO IDENTIFICATION | | X | 1 |
| | | Identification of second related location by code or name. | | | |
| | 3233 | Second related location name code | | X | an..25 |
| | | Code specifying the second related location. | | | |
| | 1131 | Code list identification code | | X | an..17 |
| | | Code identifying a user or association maintained code list. | | | |
| | 3055 | Code list responsible agency code | | X | an..3 |
| | | Code specifying the agency responsible for a code list. | | | |
| | 3232 | Second related location name | | X | an..70 |
| | | Name of the second related location. | | | |
| 5479 | | RELATION CODE | | X | 1 an..3 |
| | | Code specifying a relation. | | | |

Group: **NAD** Segment Group 4: Name and Address
Position: 0180
Group:
Level: 1
Usage: Mandatory
Max Use: 9
Purpose: A group of segments to identify a party and/or addresses and a related contact and references.

Segment Summary

| | Pos. No. | Seg. ID | Name | Req. Des. | Max. Use | Group: Repeat |
|---|---------------------|--------------------|------------------|----------------------|---------------------|--------------------------|
| M | 0190 | NAD | Name and Address | M | | 1 |

Segment: **NAD** Name and Address
Position: 0190 (Trigger Segment)
Group: Segment Group 4 (Name and Address) Mandatory
Level: 1
Usage: Mandatory
Max Use: 1
Purpose: A segment to identify the party's name and address, and function, and other addresses.
Comments: Rules and Conditions

Hamburg Süd will always provide Message Sender (MS) and Message Receiver (MR) as standard information. Additionally the shipper will be reported, if known at time of message creation.

Example Syntax

NAD+MR+RECEIVER:160:87'
 NAD+MS+HSD:160:87'
 NAD+SH+SHIPPER NAME:160:87'

Data Element Summary

| <u>Attributes</u> | <u>Data Element</u> | <u>Component Element</u> | <u>Name</u> | | | |
|-------------------|---------------------|--------------------------|--|---|---|--------|
| M | 3035 | | PARTY FUNCTION CODE QUALIFIER | M | 1 | an..3 |
| | | | Code giving specific meaning to a party. | | | |
| | | MR | Message recipient | | | |
| | | | A party to receive a message or messages. | | | |
| | | MS | Document/message issuer/sender | | | |
| | | | Issuer of a document and/or sender of a message. | | | |
| | | SH | Shipper party | | | |
| | C082 | | PARTY IDENTIFICATION DETAILS | C | 1 | |
| | | | Identification of a transaction party by code. | | | |
| M | | 3039 | Party identifier | M | | an..35 |
| | | | Code specifying the identity of a party. | | | |
| | | | Element 3055 = 'MS': always 'HSD' | | | |
| | | | Element 3055 = 'MR': to be mutually agreed, proposed: same as UNB.0010 | | | |
| | | | Element 3055 = 'SH': as per Hamburg Süd records | | | |
| | | 1131 | Code list identification code | C | | an..17 |
| | | | Code identifying a user or association maintained code list. | | | |
| | | 160 | Party identification | | | |
| | | 3055 | Code list responsible agency code | C | | an..3 |
| | | | Code specifying the agency responsible for a code list. | | | |
| | | 87 | Assigned by carrier | | | |
| | C058 | | NAME AND ADDRESS | X | 1 | |
| | | | Unstructured name and address: one to five lines. | | | |
| M | | 3124 | Name and address description | X | | an..35 |
| | | | Free form description of a name and address line. | | | |
| | | 3124 | Name and address description | X | | an..35 |
| | | | Free form description of a name and address line. | | | |
| | | 3124 | Name and address description | X | | an..35 |
| | | | Free form description of a name and address line. | | | |
| | | 3124 | Name and address description | X | | an..35 |

| | | | | |
|----------|-------------|--|----------|-----------------|
| | | Free form description of a name and address line. | | |
| | 3124 | Name and address description | X | an..35 |
| | | Free form description of a name and address line. | | |
| | C080 | PARTY NAME | X | 1 |
| | | Identification of a transaction party by name, one to five lines. Party name may be formatted. | | |
| M | 3036 | Party name | X | an..35 |
| | | Name of a party. | | |
| | 3036 | Party name | X | an..35 |
| | | Name of a party. | | |
| | 3036 | Party name | X | an..35 |
| | | Name of a party. | | |
| | 3036 | Party name | X | an..35 |
| | | Name of a party. | | |
| | 3036 | Party name | X | an..35 |
| | | Name of a party. | | |
| | 3045 | Party name format code | X | an..3 |
| | | Code specifying the representation of a party name. | | |
| | C059 | STREET | X | 1 |
| | | Street address and/or PO Box number in a structured address: one to four lines. | | |
| M | 3042 | Street and number or post office box identifier | X | an..35 |
| | | To identify a street and number and/or Post Office box number. | | |
| | 3042 | Street and number or post office box identifier | X | an..35 |
| | | To identify a street and number and/or Post Office box number. | | |
| | 3042 | Street and number or post office box identifier | X | an..35 |
| | | To identify a street and number and/or Post Office box number. | | |
| | 3042 | Street and number or post office box identifier | X | an..35 |
| | | To identify a street and number and/or Post Office box number. | | |
| | 3164 | CITY NAME | X | 1 an..35 |
| | | Name of a city. | | |
| | C819 | COUNTRY SUB-ENTITY DETAILS | X | 1 |
| | | To specify a part of a country (eg county or part of a city). | | |
| | 3229 | Country sub-entity name code | X | an..9 |
| | | Code specifying the name of a country sub-entity. | | |
| | 1131 | Code list identification code | X | an..17 |
| | | Code identifying a user or association maintained code list. | | |
| | 3055 | Code list responsible agency code | X | an..3 |
| | | Code specifying the agency responsible for a code list. | | |
| | 3228 | Country sub-entity name | X | an..70 |
| | | Name of a country sub-entity. | | |
| | 3251 | POSTAL IDENTIFICATION CODE | X | 1 an..17 |
| | | Code specifying the postal zone or address. | | |
| | 3207 | COUNTRY NAME CODE | X | 1 an..3 |
| | | Identification of the name of the country or other geographical entity as defined in ISO 3166-1. | | |

Group: EQD Segment Group 13: Equipment Details
Position: 0540
Group:
Level: 1
Usage: Mandatory
Max Use: 9999
Purpose: A group of segments to specify (groups of) containers (with guidelines) in which goods are transported or which are taken on-hire or off-hire.

Segment Summary

| | Pos. No. | Seg. ID | Name | Req. Des. | Max. Use | Group: Repeat |
|---|---------------------|--------------------|------------------------------------|----------------------|---------------------|--------------------------|
| M | 0550 | EQD | Equipment Details | M | 1 | |
| | 0570 | EQN | Number of Units | C | 1 | |
| | 0590 | DTM | Date/Time/Period | C | 9 | |
| | 0620 | MEA | Measurements | C | 9 | |
| | 0630 | DIM | Dimensions | C | 9 | |
| | 0640 | | Segment Group 14: Temperature | C | | 9 |
| | 0680 | FTX | Free Text | C | 9 | |
| | 0700 | | Segment Group 15: Dangerous Goods | C | | 99 |
| | 0790 | EQA | Attached Equipment | C | 1 | |
| | 0810 | HAN | Handling Instructions | C | 9 | |
| | 0910 | | Segment Group 20: Name and Address | C | | 9 |

Segment: EQD Equipment Details
Position: 0550 (Trigger Segment)
Group: Segment Group 13 (Equipment Details) Mandatory
Level: 1
Usage: Mandatory
Max Use: 1
Purpose: A segment to specify a container, container size and type, and full/empty indication.
Comments: Rules and Conditions

Hamburg Süd groups containers by equipment size and type, and additionally by commodity and reefer settings (if applicable). As a result, there may be multiple EQD segment groups relating to the same equipment size and type.

Example Syntax

EQD+CN++42G0:::40 GENERAL PURPOSE'
EQD+CN++45R1:::40 REEFER HIGH CUBE'

Data Element Summary

| <u>Attributes</u> | <u>Data</u> | <u>Component</u> | | | | |
|-------------------|----------------|------------------|--|---|---|--------|
| | <u>Element</u> | <u>Element</u> | <u>Name</u> | | | |
| M | 8053 | | EQUIPMENT TYPE CODE QUALIFIER | M | 1 | an..3 |
| | | | Code qualifying a type of equipment. | | | |
| | | CN | Container | | | |
| | C237 | | EQUIPMENT IDENTIFICATION | X | 1 | |
| | | | Marks (letters/numbers) identifying equipment. | | | |
| | | 8260 | Equipment identifier | X | | an..17 |
| | | | To identify equipment. | | | |
| | | 1131 | Code list identification code | X | | an..17 |
| | | | Code identifying a user or association maintained code list. | | | |
| | | 3055 | Code list responsible agency code | X | | an..3 |
| | | | Code specifying the agency responsible for a code list. | | | |
| | | 3207 | Country name code | X | | an..3 |
| | | | Identification of the name of the country or other geographical entity as defined in ISO 3166-1. | | | |
| | C224 | | EQUIPMENT SIZE AND TYPE | C | 1 | |
| | | | Code and or name identifying size and type of equipment. Code preferred. | | | |
| | | 8155 | Equipment size and type description code | C | | an..10 |
| | | | Code specifying the size and type of equipment. | | | |
| | | | Container size and type according to ISO 6346:1996 ("new ISO codes"). | | | |
| | | 1131 | Code list identification code | C | | an..17 |
| | | | Code identifying a user or association maintained code list. | | | |
| | | 102 | Size and type | | | |
| | | 3055 | Code list responsible agency code | C | | an..3 |
| | | | Code specifying the agency responsible for a code list. | | | |
| | | 5 | ISO (International Organization for Standardization) | | | |
| | | 8154 | Equipment size and type description | C | | an..35 |
| | | | Free form description of the size and type of equipment. | | | |
| | 8077 | | EQUIPMENT SUPPLIER CODE | X | 1 | an..3 |
| | | | Code specifying the party that is the supplier of the equipment. | | | |
| | 8249 | | EQUIPMENT STATUS CODE | X | 1 | an..3 |
| | | | Code specifying the status of equipment. | | | |
| | 8169 | | FULL OR EMPTY INDICATOR CODE | X | 1 | an..3 |

Code indicating whether an object is full or empty.

Segment: EQN Number of Units
Position: 0570
Group: Segment Group 13 (Equipment Details) Mandatory
Level: 2
Usage: Conditional (Optional)
Max Use: 1
Purpose: A segment to specify the number of containers of the same size and type in case of equipment guidelines.
Comments: Example Syntax
 EQN+1'
 EQN+5'

Data Element Summary

| <u>Attributes</u> | <u>Data Element</u> | <u>Component Element</u> | <u>Name</u> | | |
|-------------------|---------------------|--------------------------|---|---|-------|
| M | C523 | | NUMBER OF UNIT DETAILS Identification of number of units and its purpose. | M | 1 |
| | | 6350 | Units quantity To specify the number of units. | C | n..15 |
| | | 6353 | Unit type code qualifier Code qualifying the type of unit. | X | an..3 |

Segment: **DTM** Date/Time/Period
Position: 0590
Group: Segment Group 13 (Equipment Details) Mandatory
Level: 2
Usage: Conditional (Optional)
Max Use: 9
Purpose: A segment to indicate a date and time relating to the container.
Comments: Rules and Conditions

This segment will indicate the planned pickup date for the containers. Provided are the earliest planned pickup date & time of the first container within the group and the latest planned pickup date & time of the last container. Both dates might be equal. Please note that these are the planned dates only (dates advised to the truckers) – the empty depot is allowed to release a container under the given reference until the orders expiration date (reported under DTM+36 on header level) is reached.

Example Syntax

DTM+201:201706161000:203'
 DTM+400:201706161400:203'

Data Element Summary

| <u>Attributes</u> | <u>Data Element</u> | <u>Component Element</u> | <u>Name</u> | | |
|-------------------|---------------------|--------------------------|---|---|--------|
| M | C507 | | DATE/TIME/PERIOD | M | 1 |
| | | | Date and/or time, or period relevant to the specified date/time/period type. | | |
| M | | 2005 | Date or time or period function code qualifier | M | an..3 |
| | | | Code qualifying the function of a date, time or period. | | |
| | | 201 | Pick-up date/time of equipment | | |
| | | | Here: Date and time when the first container is planned to be picked up. | | |
| | | 400 | Cargo release date/time, ultimate | | |
| | | | Here: Date and time when the last container is planned to be picked up. The empty depot is allowed to release a container until the reported expiration date is reached. | | |
| | | 2380 | Date or time or period text | C | an..35 |
| | | | The value of a date, a date and time, a time or of a period in a specified representation. | | |
| | | 2379 | Date or time or period format code | C | an..3 |
| | | | Code specifying the representation of a date, time or period. | | |
| | | 203 | CCYYMMDDHHMM | | |

| | |
|------------------|---|
| Segment: | MEA Measurements |
| Position: | 0620 |
| Group: | Segment Group 13 (Equipment Details) Mandatory |
| Level: | 2 |
| Usage: | Conditional (Optional) |
| Max Use: | 9 |
| Purpose: | A segment to specify measurement, other than dimensions, associated with the container. |
| Comments: | <p>Rules and Conditions</p> <p>Hamburg Süd will provide the tare weight and the booked gross weight of the containers. Always the sum for all containers in the respective EQD segment group is reported.</p> <p>Example Syntax</p> <p>MEA+AAE+G+KGM:6800.0' MEA+AAE+T+KGM:3800.0'</p> |

Data Element Summary

| <u>Attributes</u> | <u>Data Element</u> | <u>Component Element</u> | <u>Name</u> | | | |
|-------------------|---------------------|--------------------------|---|---|---|--------|
| M | 6311 | | MEASUREMENT PURPOSE CODE QUALIFIER Code qualifying the purpose of the measurement. | M | 1 | an..3 |
| | | AAE | Measurement | | | |
| | C502 | | MEASUREMENT DETAILS Identification of measurement type. | C | 1 | |
| | | 6313 | Measured attribute code Code specifying the attribute measured. | C | | an..3 |
| | | G | Gross weight | | | |
| | | T | Tare weight | | | |
| | | 6321 | Measurement significance code Code specifying the significance of a measurement. | X | | an..3 |
| | | 6155 | Non-discrete measurement name code Code specifying the name of a non-discrete measurement. | X | | an..17 |
| | | 6154 | Non-discrete measurement name Name of a non-discrete measurement. | X | | an..70 |
| | C174 | | VALUE/RANGE Measurement value and relevant minimum and maximum values of the measurement range. | C | 1 | |
| M | | 6411 | Measurement unit code Code specifying the unit of measurement. | M | | an..8 |
| | | KGM | Kilograms | | | |
| | | 6314 | Measure To specify the value of a measurement. | C | | an..18 |
| | | | Weight in kilograms | | | |
| | | 6162 | Range minimum quantity To specify the minimum value of a range. | X | | n..18 |
| | | 6152 | Range maximum quantity To specify the maximum value of a range. | X | | n..18 |
| | | 6432 | Significant digits quantity Count of the number of significant digits. | X | | n..2 |
| | 7383 | | SURFACE OR LAYER CODE Code specifying the surface or layer of an object. | X | 1 | an..3 |

| | |
|------------------|---|
| Segment: | DIM Dimensions |
| Position: | 0630 |
| Group: | Segment Group 13 (Equipment Details) Mandatory |
| Level: | 2 |
| Usage: | Conditional (Optional) |
| Max Use: | 9 |
| Purpose: | Off-standard dimensions, general |
| Comments: | <p>Rules and Conditions</p> <p>For OOG cargo, this segment contains overlength, overwidth, and overheight values. Each overdimension will be reported in a dedicated segment.</p> <p>Example Syntax</p> <p>DIM+6+CMT:1' DIM+7+CMT::1' DIM+13+CMT:::1'</p> |

Data Element Summary

| <u>Attributes</u> | <u>Data Element</u> | <u>Component Element</u> | <u>Name</u> | | |
|-------------------|---------------------|--------------------------|---|---|--|
| M | 6145 | | DIMENSION TYPE CODE QUALIFIER | M | 1 an..3 |
| | | | Code qualifying the type of the dimension. | | |
| | | | 5 Off-standard dimension front | | |
| | | | | | The dimension in the length that the cargo exceeds the standard length at the front of an equipment. |
| | | | 6 Off-standard dimension back | | |
| | | | | | The dimension in the length that the cargo exceeds the standard length at the back of an equipment. |
| | | | 7 Off-standard dimension right | | |
| | | | | | The dimension in the width that the cargo exceeds the standard width at the right side of an equipment. |
| | | | 8 Off-standard dimension left | | |
| | | | | | The dimension in the width that the cargo exceeds the standard width at the left side of an equipment. |
| | | | 13 Off-standard dimensions height | | |
| | | | | | The dimension in the height that the cargo exceeds the standard height at the top of a piece of equipment. |
| M | C211 | | DIMENSIONS | M | 1 |
| | | | Specification of the dimensions of a transportable unit. | | |
| M | | 6411 | Measurement unit code | M | an..8 |
| | | | Code specifying the unit of measurement. | | |
| | | | CMT Centimetres | | |
| | | 6168 | Length measure | C | n..15 |
| | | | To specify the value of a length dimension. | | |
| | | | Only provided for overlength front or behind (element 6145 = "5" or "6"). | | |
| | | 6140 | Width measure | C | n..15 |
| | | | To specify the value of a width dimension. | | |
| | | | Only provided for overwidth left or right (element 6145 = "7" or "8"). | | |
| | | 6008 | Height measure | C | n..15 |
| | | | To specify the value of a height dimension. | | |
| | | | Only provided for overheight (element 6145 = "13"). | | |

Group: **TMP** Segment Group 14: Temperature
Position: 0640
Group: Segment Group 13 (Equipment Details) Mandatory
Level: 2
Usage: Conditional (Optional)
Max Use: 9
Purpose: A segment group to identify transport related temperature settings

Segment Summary

| | Pos. | Seg. | | Req. | Max. | Group: |
|---|-------------------|------------------|--------------------|--------------------|-------------------|----------------------|
| | <u>No.</u> | <u>ID</u> | <u>Name</u> | <u>Des.</u> | <u>Use</u> | <u>Repeat</u> |
| M | 0650 | TMP | Temperature | M | | 1 |

Segment: **TMP** Temperature
Position: 0650 (Trigger Segment)
Group: Segment Group 14 (Temperature) Conditional (Optional)
Level: 2
Usage: Mandatory
Max Use: 1
Purpose: A segment to specify the transport temperature setting of a container.
Comments: Rules and Conditions

Temperature settings applying to all containers in the respective EQD segment group.

Example Syntax

TMP+2+-2.0:CEL'

Data Element Summary

| <u>Attributes</u> | <u>Data Element</u> | <u>Component Element</u> | <u>Name</u> | | | |
|-------------------|---------------------|--------------------------|--|---|---|-------|
| M | 6245 | | TEMPERATURE TYPE CODE QUALIFIER | M | 1 | an..3 |
| | | | Code qualifying the type of a temperature. | | | |
| | | 2 | Transport temperature | | | |
| | C239 | | TEMPERATURE SETTING | C | 1 | |
| | | | The temperature under which the goods are (to be) stored or shipped. | | | |
| | | 6246 | Temperature degree | C | | n..15 |
| | | | To specify the value of a temperature. | | | |
| | | | Temperature value in degrees Celsius, always with one decimal place. May be leaded by a minus sign to indicate sub-zero temperatures. | | | |
| | | 6411 | Measurement unit code | C | | an..8 |
| | | | Code specifying the unit of measurement. | | | |
| | | | CEL Degrees Celsius | | | |

Segment: **FTX** Free Text
Position: 0680
Group: Segment Group 13 (Equipment Details) Mandatory
Level: 2
Usage: Conditional (Optional)
Max Use: 9
Purpose: A segment to specify processable supplementary information associated with the container.
Comments: Rules and Conditions

Hamburg Süd will provide commodity information, important additional free text information (e.g. non-coded handling and reefer setup instructions) and the required condition of the containers to be released.

Example Syntax

FTX+AAA+++MEAT (NOS,FROZEN)
 FTX+AAI+++CONTAINER(S) 1, 2?: FUMIGATION REQUIRED'
 FTX+AEB+++ CONTAINER(S) 1, 2?: CA/MA?: EVERFRESH. CO2?: 15.0 PCT. O2?: 2.5 PCT. CURTAIN INSTALLED BY CARRIER. MULTI TEMPERATURE OPERATION REQUIRED.'
 FTX+AVD+++FOODGRADE'

Data Element Summary

| <u>Attributes</u> | <u>Data Element</u> | <u>Component Element</u> | <u>Name</u> | | | |
|-------------------|---------------------|--------------------------|---|---|---|---------|
| M | 4451 | | TEXT SUBJECT CODE QUALIFIER | M | 1 | an..3 |
| | | | Code qualifying the subject of the text. | | | |
| | | AAA | Goods description | | | |
| | | AAI | General information | | | |
| | | | Used by HS to transmit any additional handling instructions. | | | |
| | | AEB | Temperature control instructions | | | |
| | | | Used by HS to transmit any additional information regarding reefer setup. | | | |
| | | AVD | Equipment condition | | | |
| | 4453 | | FREE TEXT FUNCTION CODE | X | 1 | an..3 |
| | | | Code specifying the function of free text. | | | |
| | C107 | | TEXT REFERENCE | X | 1 | |
| | | | Coded reference to a standard text and its source. | | | |
| M | | 4441 | Free text description code | X | | an..17 |
| | | | Code specifying free form text. | | | |
| | | 1131 | Code list identification code | X | | an..17 |
| | | | Code identifying a user or association maintained code list. | | | |
| | | 3055 | Code list responsible agency code | X | | an..3 |
| | | | Code specifying the agency responsible for a code list. | | | |
| | C108 | | TEXT LITERAL | C | 1 | |
| | | | Free text; one to five lines. | | | |
| | | | For 4451 = 'AAA', this contains the booked commodity. | | | |
| | | | For 4451 = 'AAI', this contains any important information that could not be reported in coded form elsewhere. | | | |
| M | | 4440 | Free text | M | | an..512 |
| | | | Free form text. | | | |
| | | 4440 | Free text | C | | an..512 |
| | | | Free form text. | | | |

| | | | | |
|-------------|-------------|--|----------|----------------|
| | 4440 | Free text Free form text. | C | an..512 |
| | 4440 | Free text Free form text. | C | an..512 |
| | 4440 | Free text Free form text. | C | an..512 |
| 3453 | | LANGUAGE NAME CODE Code specifying the language name. | X | 1 an..3 |
| 4447 | | FREE TEXT FORMAT CODE Code specifying the format of free text. | X | 1 an..3 |

Group: **DGS** Segment Group 15: Dangerous Goods
Position: 0700
Group: Segment Group 13 (Equipment Details) Mandatory
Level: 2
Usage: Conditional (Optional)
Max Use: 99
Purpose: A segment group to identify dangerous goods.

Segment Summary

| | Pos. No. | Seg. ID | Name | Req. Des. | Max. Use | Group: Repeat |
|---|---------------------|--------------------|-----------------|----------------------|---------------------|--------------------------|
| M | 0710 | DGS | Dangerous Goods | M | | 1 |
| | 0720 | FTX | Free Text | C | | 9 |

| | |
|------------------|---|
| Segment: | DGS Dangerous Goods |
| Position: | 0710 (Trigger Segment) |
| Group: | Segment Group 15 (Dangerous Goods) Conditional (Optional) |
| Level: | 2 |
| Usage: | Mandatory |
| Max Use: | 1 |
| Purpose: | A segment to specify dangerous goods. |
| Comments: | <p>Rules and Conditions</p> <p>Dangerous Goods to be shipped within the containers of the respective EQD segment group. The UNDG number in element 7124 will always consist of exactly 4 numeric digits (probably left-padded with zeroes).</p> <p>Example Syntax</p> <p>DGS+IMD+6.1+2997+35:CEL+2'</p> |

Data Element Summary

| | <u>Data Element</u> | <u>Component Element</u> | <u>Name</u> | | |
|----------|---------------------|--------------------------|--|----------|----------------|
| M | 8273 | | DANGEROUS GOODS REGULATIONS CODE Code specifying a dangerous goods regulation. IMD IMO IMDG code | C | 1 an..3 |
| | C205 | | HAZARD CODE The identification of the dangerous goods in code. | C | 1 |
| | 8351 | | Hazard identification code Code identifying a hazard. IMDG class | M | an..7 |
| | 8078 | | Additional hazard classification identifier To identify an additional hazard classification. | X | an..7 |
| | 8092 | | Hazard code version identifier To identify the version number of a hazard code. | X | an..10 |
| | C234 | | UNDG INFORMATION Information on dangerous goods, taken from the United Nations Dangerous Goods classification. | C | 1 |
| | 7124 | | United Nations Dangerous Goods (UNDG) identifier The unique serial number assigned within the United Nations to substances and articles contained in a list of the dangerous goods most commonly carried. UNDG number, exactly 4 numeric digits | C | n4 |
| | 7088 | | Dangerous goods flashpoint description To describe the flashpoint of dangerous goods. | X | an..8 |
| | C223 | | DANGEROUS GOODS SHIPMENT FLASHPOINT Temperature at which a vapor can be ignited as per ISO 1523/73. | C | 1 |
| | 7106 | | Shipment flashpoint degree To specify the value of the flashpoint of a shipment. | C | n3 |
| | 6411 | | Measurement unit code Code specifying the unit of measurement. CEL Degrees Celsius | C | an..8 |
| | 8339 | | PACKAGING DANGER LEVEL CODE Code specifying the level of danger for which the packaging must cater. 1 Great Danger 2 Medium Danger | C | 1 an..3 |

| | | 3 | Minor Danger | |
|------|--|---|--------------|----------|
| 8364 | EMERGENCY PROCEDURE FOR SHIPS IDENTIFIER | | X | 1 an..6 |
| | To identify the emergency procedure number for ships transporting dangerous goods. Synonym: EMS Number. | | | |
| 8410 | HAZARD MEDICAL FIRST AID GUIDE IDENTIFIER | | X | 1 an..4 |
| | To identify a Medical First Aid Guide (MFAG) for hazardous goods. | | | |
| 8126 | TRANSPORT EMERGENCY CARD IDENTIFIER | | X | 1 an..10 |
| | To identify a transport emergency (TREM) card. | | | |
| C235 | HAZARD IDENTIFICATION PLACARD DETAILS | | X | 1 |
| | These numbers appear on the hazard identification placard required on the means of transport. | | | |
| 8158 | Orange hazard placard upper part identifier | | X | an..4 |
| | To specify the identity number for the upper part of the orange hazard placard required on the means of transport. | | | |
| 8186 | Orange hazard placard lower part identifier | | X | an4 |
| | To specify the identity number for the lower part of the orange hazard placard required on the means of transport. | | | |
| C236 | DANGEROUS GOODS LABEL | | X | 1 |
| | Markings identifying the type of hazardous goods and similar information. | | | |
| 8246 | Dangerous goods marking identifier | | X | an..4 |
| | To identify the marking of dangerous goods. | | | |
| 8246 | Dangerous goods marking identifier | | X | an..4 |
| | To identify the marking of dangerous goods. | | | |
| 8246 | Dangerous goods marking identifier | | X | an..4 |
| | To identify the marking of dangerous goods. | | | |
| 8255 | PACKING INSTRUCTION TYPE CODE | | X | 1 an..3 |
| | Code specifying a type of packing instruction. | | | |
| 8325 | HAZARDOUS MEANS OF TRANSPORT CATEGORY CODE | | X | 1 an..3 |
| | Code specifying the category of means of transport for carrying hazardous goods. | | | |
| 8211 | HAZARDOUS CARGO TRANSPORT AUTHORISATION CODE | | X | 1 an..3 |
| | Code specifying the authorisation for the transportation of hazardous cargo. | | | |

Segment: **FTX** Free Text
Position: 0720
Group: Segment Group 15 (Dangerous Goods) Conditional (Optional)
Level: 3
Usage: Conditional (Optional)
Max Use: 9
Purpose: A segment to specify supplementary details regarding the dangerous goods such as the technical name of the dangerous goods etc.
Comments: Rules and Conditions
 At this level the Proper Shipping Name of the Dangerous Goods item will be reported.
 Example Syntax
 FTX+AAC+++TRIAZINE PESTICIDE, LIQUID, TOXIC, FLAMMABLE'

Data Element Summary

| <u>Attributes</u> | <u>Data</u> | <u>Component</u> | | | |
|-------------------|----------------|------------------|--|---|---------|
| | <u>Element</u> | <u>Element</u> | <u>Name</u> | | |
| M | 4451 | | TEXT SUBJECT CODE QUALIFIER | M | 1 an..3 |
| | | | Code qualifying the subject of the text. | | |
| | | AAC | Dangerous goods additional information | | |
| | 4453 | | FREE TEXT FUNCTION CODE | X | 1 an..3 |
| | | | Code specifying the function of free text. | | |
| | C107 | | TEXT REFERENCE | X | 1 |
| | | | Coded reference to a standard text and its source. | | |
| M | | 4441 | Free text description code | X | an..17 |
| | | | Code specifying free form text. | | |
| | | 1131 | Code list identification code | X | an..17 |
| | | | Code identifying a user or association maintained code list. | | |
| | | 3055 | Code list responsible agency code | X | an..3 |
| | | | Code specifying the agency responsible for a code list. | | |
| | C108 | | TEXT LITERAL | C | 1 |
| | | | Free text; one to five lines. | | |
| M | | 4440 | Free text | M | an..512 |
| | | | Free form text. | | |
| | | | Proper shipping name | | |
| | | 4440 | Free text | X | an..512 |
| | | | Free form text. | | |
| | | 4440 | Free text | X | an..512 |
| | | | Free form text. | | |
| | | 4440 | Free text | X | an..512 |
| | | | Free form text. | | |
| | | 4440 | Free text | X | an..512 |
| | | | Free form text. | | |
| | 3453 | | LANGUAGE NAME CODE | X | 1 an..3 |
| | | | Code specifying the language name. | | |
| | 4447 | | FREE TEXT FORMAT CODE | X | 1 an..3 |
| | | | Code specifying the format of free text. | | |

Segment: **EQA Attached Equipment**
Position: 0790
Group: Segment Group 13 (Equipment Details) Mandatory
Level: 2
Usage: Conditional (Optional)
Max Use: 1
Purpose: A segment to identify related container and means of transport details.
Comments: Rules and Conditions
 Segment to be sent only if an external reefer generator is required. For reefer equipment not requiring external reefer generators no explicit segment will be sent.
 Example Syntax
 EQA+RG+Y'

Data Element Summary

| <u>Attributes</u> | <u>Data</u> | <u>Component</u> | | | |
|-------------------|----------------|------------------|--|---|---------|
| | <u>Element</u> | <u>Element</u> | <u>Name</u> | | |
| M | 8053 | | EQUIPMENT TYPE CODE QUALIFIER | M | 1 an..3 |
| | | | Code qualifying a type of equipment. | | |
| | | RG | Reefer generator | | |
| | | | A generator used to control the temperature in temperature-controlled transport equipment. | | |
| | C237 | | EQUIPMENT IDENTIFICATION | C | 1 |
| | | | Marks (letters/numbers) identifying equipment. | | |
| | | 8260 | Equipment identifier | C | an..17 |
| | | | To identify equipment. | | |
| | | Y | Yes | | |
| | | 1131 | Code list identification code | X | an..17 |
| | | | Code identifying a user or association maintained code list. | | |
| | | 3055 | Code list responsible agency code | X | an..3 |
| | | | Code specifying the agency responsible for a code list. | | |
| | | 3207 | Country name code | X | an..3 |
| | | | Identification of the name of the country or other geographical entity as defined in ISO 3166-1. | | |

Segment: **HAN Handling Instructions**
Position: 0810
Group: Segment Group 13 (Equipment Details) Mandatory
Level: 2
Usage: Conditional (Optional)
Max Use: 9
Purpose: A segment to specify handling instructions related to the container equipment.
Comments: Rules and Conditions

Hamburg Süd will report required ventilation and humidification settings for reefer equipment in this segment.

Example Syntax

HAN+VEN:130:ZZZ:VENTILATED 50 CBM/H'
HAN+HUM:130:ZZZ:HUMIDITY CONTROLLED 25 PCT'

Data Element Summary

| <u>Attributes</u> | <u>Data</u> | <u>Component</u> | | |
|-------------------|----------------|---|----------|---------------|
| | <u>Element</u> | <u>Element</u> | | |
| | C524 | HANDLING INSTRUCTIONS | C | 1 |
| | | Instruction for the handling of goods, products or articles in shipment, storage etc. | | |
| | | 4079 Handling instruction description code | C | an..3 |
| | | Code specifying a handling instruction. | | |
| | | HUM Humidification setting | | |
| | | VEN Ventilation setting | | |
| | | 1131 Code list identification code | C | an..17 |
| | | Code identifying a user or association maintained code list. | | |
| | | 130 Special handling | | |
| | | 3055 Code list responsible agency code | C | an..3 |
| | | Code specifying the agency responsible for a code list. | | |
| | | ZZZ Mutually defined | | |
| | | 4078 Handling instruction description | C | an..70 |
| | | Free form description of a handling instruction. | | |
| | C218 | HAZARDOUS MATERIAL | X | 1 |
| | | To specify a hazardous material. | | |
| | | 7419 Hazardous material category name code | X | an..7 |
| | | Code specifying a kind of hazard for a material. | | |
| | | 1131 Code list identification code | X | an..17 |
| | | Code identifying a user or association maintained code list. | | |
| | | 3055 Code list responsible agency code | X | an..3 |
| | | Code specifying the agency responsible for a code list. | | |
| | | 7418 Hazardous material category name | X | an..35 |
| | | Name of a kind of hazard for a material. | | |

Group: **NAD** Segment Group 20: Name and Address
Position: 0910
Group: Segment Group 13 (Equipment Details) Mandatory
Level: 2
Usage: Conditional (Optional)
Max Use: 9
Purpose: A group of segments to identify different parties/places, and related dates/times.

Segment Summary

| | Pos. | Seg. | | Req. | Max. | Group: |
|---|-------------------|------------------|--------------------|--------------------|-------------------|----------------------|
| | <u>No.</u> | <u>ID</u> | <u>Name</u> | <u>Des.</u> | <u>Use</u> | <u>Repeat</u> |
| M | 0190 | NAD | Name and Address | M | | 1 |

Segment: **NAD Name and Address**
Position: 0920 (Trigger Segment)
Group: Segment Group 20 (Name and Address) Mandatory
Level: 1
Usage: Mandatory
Max Use: 2
Purpose: A segment to specify a related address or party.
Comments: Rules and Conditions

 To identify the contracted vendor to pick up the empty equipment.

 Example Syntax

 NAD+GA+TRUCKER:160:87'

Data Element Summary

| <u>Attributes</u> | <u>Data Element</u> | <u>Component Element</u> | <u>Name</u> | | | |
|-------------------|---------------------|--------------------------|---|---|---|--------|
| M | 3035 | | PARTY FUNCTION CODE QUALIFIER Code giving specific meaning to a party. | M | 1 | an..3 |
| | | GA | Road carrier | | | |
| | C082 | | PARTY IDENTIFICATION DETAILS Identification of a transaction party by code. | C | 1 | |
| M | | 3039 | Party identifier Code specifying the identity of a party. | M | | an..35 |
| | | 1131 | Code list identification code Code identifying a user or association maintained code list. | C | | an..17 |
| | | 160 | Party identification | | | |
| | | 3055 | Code list responsible agency code Code specifying the agency responsible for a code list. | C | | an..3 |
| | | 87 | Assigned by carrier | | | |
| | C058 | | NAME AND ADDRESS Unstructured name and address: one to five lines. | X | 1 | |
| M | | 3124 | Name and address description Free form description of a name and address line. | X | | an..35 |
| | | 3124 | Name and address description Free form description of a name and address line. | X | | an..35 |
| | | 3124 | Name and address description Free form description of a name and address line. | X | | an..35 |
| | | 3124 | Name and address description Free form description of a name and address line. | X | | an..35 |
| | | 3124 | Name and address description Free form description of a name and address line. | X | | an..35 |
| | C080 | | PARTY NAME Identification of a transaction party by name, one to five lines. Party name may be formatted. | X | 1 | |
| M | | 3036 | Party name Name of a party. | X | | an..35 |
| | | 3036 | Party name Name of a party. | X | | an..35 |
| | | 3036 | Party name Name of a party. | X | | an..35 |

| | | | | |
|----------|-------------|--|----------|-----------------|
| | 3036 | Party name Name of a party. | X | an..35 |
| | 3036 | Party name Name of a party. | X | an..35 |
| | 3045 | Party name format code Code specifying the representation of a party name. | X | an..3 |
| M | C059 | STREET Street address and/or PO Box number in a structured address: one to four lines. | X | 1 |
| | 3042 | Street and number or post office box identifier To identify a street and number and/or Post Office box number. | X | an..35 |
| | 3042 | Street and number or post office box identifier To identify a street and number and/or Post Office box number. | X | an..35 |
| | 3042 | Street and number or post office box identifier To identify a street and number and/or Post Office box number. | X | an..35 |
| | 3042 | Street and number or post office box identifier To identify a street and number and/or Post Office box number. | X | an..35 |
| | 3164 | CITY NAME Name of a city. | X | 1 an..35 |
| | C819 | COUNTRY SUB-ENTITY DETAILS To specify a part of a country (eg county or part of a city). | X | 1 |
| | 3229 | Country sub-entity name code Code specifying the name of a country sub-entity. | X | an..9 |
| | 1131 | Code list identification code Code identifying a user or association maintained code list. | X | an..17 |
| | 3055 | Code list responsible agency code Code specifying the agency responsible for a code list. | X | an..3 |
| | 3228 | Country sub-entity name Name of a country sub-entity. | X | an..70 |
| | 3251 | POSTAL IDENTIFICATION CODE Code specifying the postal zone or address. | X | 1 an..17 |
| | 3207 | COUNTRY NAME CODE Identification of the name of the country or other geographical entity as defined in ISO 3166-1. | X | 1 an..3 |

Segment: **UNT** Message Trailer
Position: 0980
Group:
Level: 0
Usage: Mandatory
Max Use: 1
Purpose: A service segment ending a message, giving the total number of segments in the message (including the UNH & UNT) and the control reference number of the message.

Comments: Example Syntax
 UNT+26+4711'

Data Element Summary

| <u>Attributes</u> | <u>Data Element</u> | <u>Component Element</u> | <u>Name</u> | | | |
|-------------------|---------------------|--------------------------|--|---|---|--------|
| M | 0074 | | NUMBER OF SEGMENTS IN A MESSAGE | M | 1 | n..6 |
| | | | Control count of number of segments in a message. | | | |
| | | | Number of segments from UNH to UNT. | | | |
| M | 0062 | | MESSAGE REFERENCE NUMBER | M | 1 | an..14 |
| | | | Unique message reference assigned by the sender. | | | |
| | | | The UNH and UNT message reference numbers must be identical. | | | |

Segment: UNZ Interchange Trailer
Position: 0990
Group:
Level: 0
Usage: Mandatory
Max Use: 1
Purpose: To end and check the completeness of an interchange
Comments: Example Syntax
 UNZ+1+4711'

Data Element Summary

| <u>Attributes</u> | <u>Data Element</u> | <u>Component Element</u> | <u>Name</u> | | | |
|-------------------|---------------------|--------------------------|--|---|---|--------|
| M | 0036 | | INTERCHANGE CONTROL COUNT | M | 1 | n..6 |
| | | | Count either of the number of messages or, if used, of the number of functional groups in an interchange. Number of messages (UNH-UNT pairs) in the interchange (UNB-UNZ pair). | | | |
| M | 0020 | | INTERCHANGE CONTROL REFERENCE | M | 1 | an..14 |
| | | | Unique reference assigned by the sender to an interchange. The UNB and UNZ interchange control references must be identical. | | | |

Example Messages**1. Initial request to release two 40' standard dry containers**

UNB+UNOA:2+HSD+RECEIVER+161013:1329+9'
UNH+9+COPARN:D:03A:UN'
BGM+108+6MEL0500181610131329+9+AB'
DTM+36:20161031:102'
LOC+98+AUMEL:139:6+AUMELCOOD:5:ZZZ:ACFS PATRICK PORT LOGISTICS'
RFF+BN:6MEL050018'
TDT+20+503N+1+++HSD:172+++9436434:146:11:GUENTHER SCHULTE'
RFF+VM:VRGK8'
LOC+9+AUMEL:139:6+AUMELDPWT:5:ZZZ:DP WORLD TERMINAL MELBOURNE'
LOC+11+NZTRG:139:6'
LOC+8+NZMKL:139:6'
NAD+MR+RECEIVER:160:87'
NAD+MS+HSD:160:87'
NAD+SH+SHIPPER NAME:160:87'
EQD+CN++42G0:::40 GENERAL PURPOSE'
EQN+2'
DTM+201:201610161000:203'
DTM+400:201610161000:203'
MEA+AAE+G+KGM:26800.0'
MEA+AAE+T+KGM:7600.0'
FTX+AAA+++TEXTILES (NOS)'
FTX+AVD+++GENERAL CARGO'
NAD+GA+TRUCKER:160:87'
UNT+23+9'
UNZ+1+9'

2. Replacement request for a release of two 40' reefer high cube containers (operated)

UNB+UNOA:2+HSD+RECEIVER+160927:0921+3'
UNH+3+COPARN:D:03A:UN'
BGM+108+6SYD0500361609270921+5+AB'
DTM+36:20161031:102'
LOC+98+AUSYD:139:6+AUSYDACFS:5:ZZZ:ACFS E-DEPOT'
RFF+BN:6SYD050036'
RFF+ACW:6SYD0500361609250833'
TDT+20+965N+1+++HSD:172+++9246310:146:11:BSL LIMASSOL'
RFF+VM:ELZY3'
LOC+9+AUSYD:139:6+AUSYDDPWT:5:ZZZ:DP WORLD TERMINAL SYDNEY'
LOC+11+CAVAN:139:6'
LOC+8+CAVAN:139:6'
NAD+MR+RECEIVER:160:87'
NAD+MS+HSD:160:87'
NAD+SH+SHIPPER NAME:160:87'
EQD+CN++45R1:::40 REEFER HIGH CUBE'
EQN+2'
DTM+201:201609281700:203'
DTM+400:201609281700:203'
MEA+AAE+G+KGM:39600.0'
MEA+AAE+T+KGM:9600.0'
TMP+2+-2.0:CEL'
FTX+AAA+++MEAT (NOS,FROZEN)'
FTX+AEB+++CONTAINER(S) 1, 2?: CA/MA?: EVERFRESH. CO2?: 15.0 PCT. O2?: 2.5 PCT.'
FTX+AVD+++FOODGRADE'
HAN+HUM:130:ZZZ:HUMIDITY CONTROLLED 25 PCT'
HAN+VEN:130:ZZZ:VENTILATED 50 CBM/H'
NAD+GA+TRUCKER:160:87'

UNT+28+3'
UNZ+1+3'

3. Cancellation request for a release of five 40' reefer high cube containers (non-operated)

Note: Hamburg Süd will only report required reefer settings for operative reefers **and** if reefer settings should be set up responsibly by the empty depot!

UNB+UNOA:2+HSD+RECEIVER+170322:0349+12'
UNH+12+COPARN:D:03A:UN'
BGM+108+7SYD0500111703220349+1+AB'
DTM+36:20161031:102'
LOC+98+AUSYD:139:6+AUSYDACFS:5:ZZZ:ACFS E-DEPOT'
RFF+BN:7SYD050011'
RFF+ACW:7SYD0500111701495735'
TDT+20+526N+1+++HSD:172+++9315355:146:11:ANL BINDAREE'
RFF+VM:A8MI3'
LOC+9+AUSYD:139:6+AUSYDDPWT:5:ZZZ:DP WORLD TERMINAL SYDNEY'
LOC+11+NZTRG:139:6'
LOC+8+NZMKL:139:6'
NAD+MR+RECEIVER:160:87'
NAD+MS+HSD:160:87'
NAD+SH+SHIPPER NAME:160:87'
EQD+CN++45R1:::40 REEFER HIGH CUBE'
EQN+5'
DTM+201:201610250800:203'
DTM+400:201610252000:203'
MEA+AAE+G+KGM:63260.0'
MEA+AAE+T+KGM:24000.0'
FTX+AAA+++FRUIT (NOS,FRESH)'
FTX+AVD+++FOODGRADE'
NAD+GA+TRUCKER:160:87'
UNT+24+12'
UNZ+1+12'

4. Initial request to release two 20' tank containers including DG cargo

UNB+UNOA:2+HSD+RECEIVER+160927:0921+3'
UNH+3+COPARN:D:03A:UN'
BGM+108+6SYD0500361609270921+9+AB'
DTM+36:20161031:102'
LOC+98+AUSYD:139:6+AUSYDPACL:5:ZZZ:PATRICK CARGO LINK SYDNEY'
RFF+BN:6SYD050036'
TDT+20+965N+1+++HSD:172+++9246310:146:11:BSL LIMASSOL'
RFF+VM:ELZY3'
LOC+9+AUSYD:139:6+AUSYDDPWT:5:ZZZ:DP WORLD TERMINAL SYDNEY'
LOC+11+CAVAN:139:6'
LOC+8+CAVAN:139:6'
NAD+MR+RECEIVER:160:87'
NAD+MS+HSD:160:87'
NAD+SH+SHIPPER NAME:160:87'
EQD+CN++20T0:::20 TANK'
EQN+2'
DTM+201:201609281800:203'
DTM+400:201609281800:203'
MEA+AAE+G+KGM:19600.0'
MEA+AAE+T+KGM:4440.0'

FTX+AAA+++CHEMICALS?: DG CLASS 6.1(TOXIC)'
DGS+IMD+6.1+2997+35:CEL+2'
FTX+AAC+++TRIAZINE PESTICIDE, LIQUID, TOXIC, FLAMMABLE'
FTX+AVD+++FOODGRADE'
NAD+GA+TRUCKER:160:87'
UNT+25+3'
UNZ+1+3'

5. Initial request to release two 20' flat rack containers including OOG cargo

UNB+UNOA:2+HSD+RECEIVER+160927:0921+3'
UNH+3+COPARN:D:03A:UN'
BGM+108+6SYD0500361609270921+9+AB'
DTM+36:20161031:102'
LOC+98+AUSYD:139:6+AUSYDPACL:5:ZZZ:PATRICK CARGO LINK SYDNEY'
RFF+BN:6SYD050036'
TDT+20+965N+1+++HSD:172+++9246310:146:11:BSL LIMASSOL'
RFF+VM:ELZY3'
LOC+9+AUSYD:139:6+AUSYDDPWT:5:ZZZ:DP WORLD TERMINAL SYDNEY'
LOC+11+CAVAN:139:6'
LOC+8+CAVAN:139:6'
NAD+MR+RECEIVER:160:87'
NAD+MS+HSD:160:87'
NAD+SH+SHIPPER NAME:160:87'
EQD+CN++22P3:::20 FLAT RACK'
EQN+2'
DTM+201:201609280900:203'
DTM+400:201609280900:203'
MEA+AAE+G+KGM:19000.0'
MEA+AAE+T+KGM:5600.0'
DIM+5+CMT:15'
DIM+6+CMT:15'
DIM+7+CMT::20'
DIM+8+CMT::20'
FTX+AAA+++MACHINERY (NOS)'
FTX+AVD+++GENERAL CARGO'
NAD+GA+TRUCKER:160:87'
UNT+27+3'
UNZ+1+3'

6. Initial request for a mixed release of two 40' standard dry containers plus two 40' reefer high cube containers

UNB+UNOA:2+HSD+RECEIVER+161013:1329+9'
UNH+9+COPARN:D:03A:UN'
BGM+108+6MEL0500181610131329+9+AB'
DTM+36:20161031:102'
LOC+98+AUMEL:139:6+AUMELCOOD:5:ZZZ:ACFS PATRICK PORT LOGISTICS'
RFF+BN:6MEL050018'
TDT+20+503N+1+++HSD:172+++9436434:146:11:GUENTHER SCHULTE'
RFF+VM:VRGK8'
LOC+9+AUMEL:139:6+AUMELDPWT:5:ZZZ:DP WORLD TERMINAL MELBOURNE'
LOC+11+NZTRG:139:6'
LOC+8+NZMKL:139:6'
NAD+MR+RECEIVER:160:87'
NAD+MS+HSD:160:87'
NAD+SH+SHIPPER NAME:160:87'
EQD+CN++42G0:::40 GENERAL PURPOSE'
EQN+2'
DTM+201:201610161000:203'

DTM+400:201610161200:203'
 MEA+AAE+G+KGM:16800.0'
 MEA+AAE+T+KGM:7600.0'
 FTX+AAA+++CONSUMER PRODUCTS?: FURNITURE'
 FTX+AVD+++GENERAL CARGO'
 NAD+GA+TRUCKER:160:87'
 EQD+CN++42G0:::40 REEFER HIGH CUBE'
 EQN+2'
 DTM+201:201610161400:203'
 DTM+400:201610161600:203'
 MEA+AAE+G+KGM:32000.0'
 MEA+AAE+T+KGM:9600.0'
 TMP+2+-2.0:CEL'
 FTX+AAA+++MEAT (NOS,FROZEN)'
 FTX+AEB+++CONTAINER(S) 1, 2?: CA/MA?: EVERFRESH. CO2?: 15.0 PCT. O2?: 2.5 PCT.'
 FTX+AVD+++GENERAL CARGO'
 HAN+HUM:130:ZZZ:HUMIDITY CONTROLLED 25 PCT'
 HAN+VEN:130:ZZZ:VENTILATED 50 CBM/H'
 NAD+GA+TRUCKER:160:87'
 UNT+36+9'
 UNZ+1+9'

7. Initial request to release two 40' standard dry containers with different booked commodity

UNB+UNOA:2+HSD+RECEIVER+161013:1329+9'
 UNH+9+COPARN:D:03A:UN'
 BGM+108+6MEL0500181610131329+9+AB'
 DTM+36:20161031:102'
 LOC+98+AUMEL:139:6+AUMELCOOD:5:ZZZ:ACFS PATRICK PORT LOGISTICS'
 RFF+BN:6MEL050018'
 TDT+20+503N+1+++HSD:172+++9436434:146:11:GUENTHER SCHULTE'
 RFF+VM:VRGK8'
 LOC+9+AUMEL:139:6+AUMELDPWT:5:ZZZ:DP WORLD TERMINAL MELBOURNE'
 LOC+11+NZTRG:139:6'
 LOC+8+NZMKL:139:6'
 NAD+MR+RECEIVER:160:87'
 NAD+MS+HSD:160:87'
 NAD+SH+SHIPPER NAME:160:87'
 EQD+CN++42G0:::40 GENERAL PURPOSE'
 EQN+1'
 DTM+201:201610161100:203'
 DTM+400:201610161100:203'
 MEA+AAE+G+KGM:16800.0'
 MEA+AAE+T+KGM:3800.0'
 FTX+AAA+++CONSUMER PRODUCTS?: FURNITURE'
 FTX+AVD+++GENERAL CARGO'
 NAD+GA+TRUCKER:160:87'
 EQD+CN++42G0:::40 GENERAL PURPOSE'
 EQN+1'
 DTM+201:201610161500:203'
 DTM+400:201610161500:203'
 MEA+AAE+G+KGM:10000.0'
 MEA+AAE+T+KGM:3800.0'
 FTX+AAA+++TEXTILES (NOS)'
 FTX+AVD+++GENERAL CARGO'
 NAD+GA+TRUCKER:160:87'
 UNT+32+9'
 UNZ+1+9'