



UN/EDIFACT Version D99B

**IFTMBC
Booking Confirmation Message**

Message Implementation Guide

Version 1.0.0

Change history

Version	Date	Comments
1.0.0	01-Dec-2018	Initial version

Contact our eCommerce team:

Hamburg Süd
Customer Order Management

Willy-Brandt-Str. 59-61
20457 Hamburg
Germany

Email: ecommerce@hamburgsud.com

Contents

1	Audience	5
2	General Information	5
2.1	Terminology	5
2.2	Processing Guidelines	6
2.3	Status Indicators and Usage Indicators	8
2.3.1	Status Indicators	8
2.3.2	Usage Indicators	8
2.3.3	Format	9
3	IFTMBC Booking Confirmation Message	10
	Segment: UNA Service String Advice	18
	Segment: UNB Interchange Header	19
	Segment: UNH Message Header	21
	Segment: BGM Beginning of Message	23
	Segment: CTA Contact Information	25
	Segment: COM Communication Contact	26
	Segment: DTM Date/Time/Period	27
	Segment: TSR Transport Service Requirements	28
	Segment: FTX Free Text	30
	Segment: GDS Nature of Cargo	32
	Group: RFF Segment Group 2: Reference	33
	Segment: RFF Reference	34
	Group: TDT Segment Group 3: Details of Transport	36
	Segment: TDT Details of Transport	37
	Group: LOC Segment Group 4: Place/Location Identification	40
	Segment: LOC Place/Location Identification	41
	Segment: DTM Date/Time/Period	43
	Group: NAD Segment Group 6: Name and Address	44
	Segment: NAD Name and Address	45
	Group: CTA Segment Group 7: Contact Information	48
	Segment: CTA Contact Information	49
	Segment: COM Communication Contact	50
	Group: GID Segment Group 9: Goods Item Details	51
	Segment: GID Goods Item Details	52
	Segment: FTX Free Text	55

Group: MEA Segment Group 11: Measurements.....	56
Segment: MEA Measurements	57
Group: DGS Segment Group 15: Dangerous Goods	58
Segment: DGS Dangerous Goods.....	59
Segment: FTX Free Text.....	61
Group: CTA Segment Group 16: Contact Information.....	63
Segment: CTA Contact Information	64
Segment: COM Communication Contact	65
Group: MEA Segment Group 17: Measurements.....	66
Segment: MEA Measurements	67
Group: EQD Segment Group 18: Equipment Details	69
Segment: EQD Equipment Details.....	70
Segment: EQN Number of Units	72
Segment: TMD Transport Movement Details	73
Segment: MEA Measurements	74
Segment: DIM Dimensions	76
Segment: HAN Handling Instructions.....	77
Segment: TMP Temperature.....	78
Segment: FTX Free Text.....	79
Group: NAD Segment Group 19: Name and Address.....	81
Segment: NAD Name and Address.....	82
Segment: DTM Date/Time/Period	84
Segment: UNT Message Trailer.....	85
Segment: UNZ Interchange Trailer	86
4 Appendix	87
4.1 Example Messages.....	87
4.1.1 Example Message "Booking >Confirmation"	87
4.2 Example Message "Booking Confirmation"	89

1 Audience

This document is intended for business, technical and EDI personnel engaged in establishing an electronic connection with Hamburg Süd for the purpose of receiving booking confirmation messages (IFTMBC) via UN/EDIFACT Release D99B.

The following chapters provide information regarding General Conventions and Message Specifications.

2 General Information

2.1 Terminology

Within this manual specific terminology will be used that you may not be familiar with. In order to give you some guidance, please find below the most important EDI terms and their according definitions.

Directory

An EDI directory is published every 6 months in form of versions. The version name of the directory is named by 4 character mnemonic code made up of the year and part of year (identified by A or B). For example, the specifications within this manual conform to the directory approved by the United Nations in the second half of 2000 with a directory mnemonic code of D00B.

Each directory contains sub-directories for messages, segments, composites and data elements, all of which may change with directory versions. However, since a directory version is permanent, there is no need to update computer applications when specific directory has been adopted.

Interchange

An interchange is a group of messages that are sent in one transmission. This means that it is possible to have more than one message within an interchange.

Message

A message can be described as a business transaction. Therefore, where appropriate, a message is often referred to as transaction rather than message. For example, a transaction could be a new entry, a new line, a change to a line, a cancellation of line and so on.

A full list of messages can be seen in a sub-directory within all directory versions, called the message directory. Each message has its own description and structure, which may differ by directory version. The IFTMBC message is an example of this.

Segment

A segment is uniquely identified by a 3 character mnemonic tag, which is used as a reference to a common group of business information. Usually this will mean one segment contains one item of business data (i.e. field or attribute). For example Place of Origin, Port of Loading, Port of Discharge are all locations. Do the segment for location is used, called LOC. There are, however, segments that include more than one item of business data. For example Transport

Mode and Voyage Number and Vessel are all classified as transport details included in the TDT segment.

Whilst a message has a standard structure of segments, there is also a separate subdirectory for segments within directory versions, known as the segment directory. Each segment has its own description and structure, which may differ by directory version.

Service Segment

A service segment is a segment that contains non-business related data. These segments usually encompass interchanges and messages, in the form of headers and trailers. For example UNB and UNZ service segments are header and trailer for an interchange and the UNG and UNT segments are header and trailer for message.

Segment Group

A segment group is a collection of segments that are related within a message structure. A simple example would be a group for details of transport. This would typically include a segment for the voyage (using TDT), reference (using RFF) and the locations (using LOC).

Composite Element

A composite element is a lower level of detail to identify business data within segment. It is normally used when a data item requires additional information. Each composite element has a unique code identifying it. A composite element could be used, for example when a data item is in the form of a code and it requires a type qualifier and also organization responsible for its maintenance. In case a group of data elements would be used to make composite element.

Whilst a segment has a standard structure of segments, there is also a separate subdirectory for composite elements within directory versions, known as the composite data element directory. Each composite element has its own description and structure, which may differ within directory version.

Data Element

A data element is the lowest level within the EDI structure for holding data. Each data element has a unique code identifying it. A data element can exist as a stand-alone element or as a sub-element within a composite element.

There is also a separate sub-directory for data elements within directory versions, known as the data element directory. Like many other sub-directories, the data element sub-directory contains descriptions and various information. In addition, some data elements also have associated code lists, which are published by organizations such as the International Standards Organization (ISO). However, the United Nations also has its own code lists and, in addition, it is often possible for trading partner to use their own.

2.2 Processing Guidelines

Hamburg Süd is sending a booking confirmation via IFTMBC message to the customer.

EDI communication depends on Trading Partnership and will be mutually defined within a separate agreement. Common protocols for the transmission of messages are e.g. FTP or SFTP.

2.3 Status Indicators and Usage Indicators

2.3.1 Status Indicators

Status Indicators (“M” and “C”) form part of the UN/EDIFACT standard and indicate a minimum requirement to fulfill the needs of the message structure. They are not adequate for implementation purposes. The Status Indicators are:

<u>Value</u>	<u>Description</u>
M	Mandatory The entity marked as such must appear in all messages, and apply to these messages as well as to any associated implementation guidelines (and consequently is also a Usage Indicator).
C	Conditional The entity is used by agreement between trading partners

2.3.2 Usage Indicators

Usage Indicators are implementation–related indicators that further detail the use of “Conditional” Status Indicators. Usage Indicators are applied at all levels of the guidelines and shown adjacent to data items such as segment groups, segments, composite data elements and simple data elements. They dictate the agreed usage of the data items or entities. The Usage Indicators are:

<u>Value</u>	<u>Description</u>
M	Mandatory Indicates the item is mandatory in the UN/EDIFACT message.
R	Required Indicates the item must be transmitted in this implementation.
D	Dependent Indicates that the use of the item is depending on a well-defined condition or set of conditions. These conditions must be clearly specified in the relevant implementation guideline.
C	Conditional/ Optional Indicates that this item is at the need or discretion of both trading partners.
X	Not Used Indicates that this item is not used in this implementation. If present, it will be disregarded.
NA	Not Recommended (Advised) Indicates the item needn't be transmitted in this implementation.
A	Advised Indicates the item must be recommended to be transmitted in this implementation.

Where an item within a segment group, segment or composite data element is marked with Usage Indicators “M” or “R”, but the segment group, segment or composite data element has been marked “O” or “D” (or for that matter “X”), the item is only to be transmitted when the segment group, segment or composite of which it is a part, is used.

2.3.3 Format

The format is used to describe the official format requirements within UN/EDIFACT directory.

Examples

a3	3 alphabetic characters, fixed length
n6	3 numeric characters, fixed length
an5	5 alphanumeric characters, fixed length
a..6	up to 6 alphabetic characters
an..35	up to 35 alphabetic characters
n..6	up to 6 numeric characters

3 IFTMBC Booking Confirmation Message

Introduction:

A message from the party providing forwarding and/or transport services to the party booking those services giving the confirmation information to the booking of the consignment concerned. A confirmation might read that the booking of a consignment is accepted, pending, conditionally accepted or rejected.

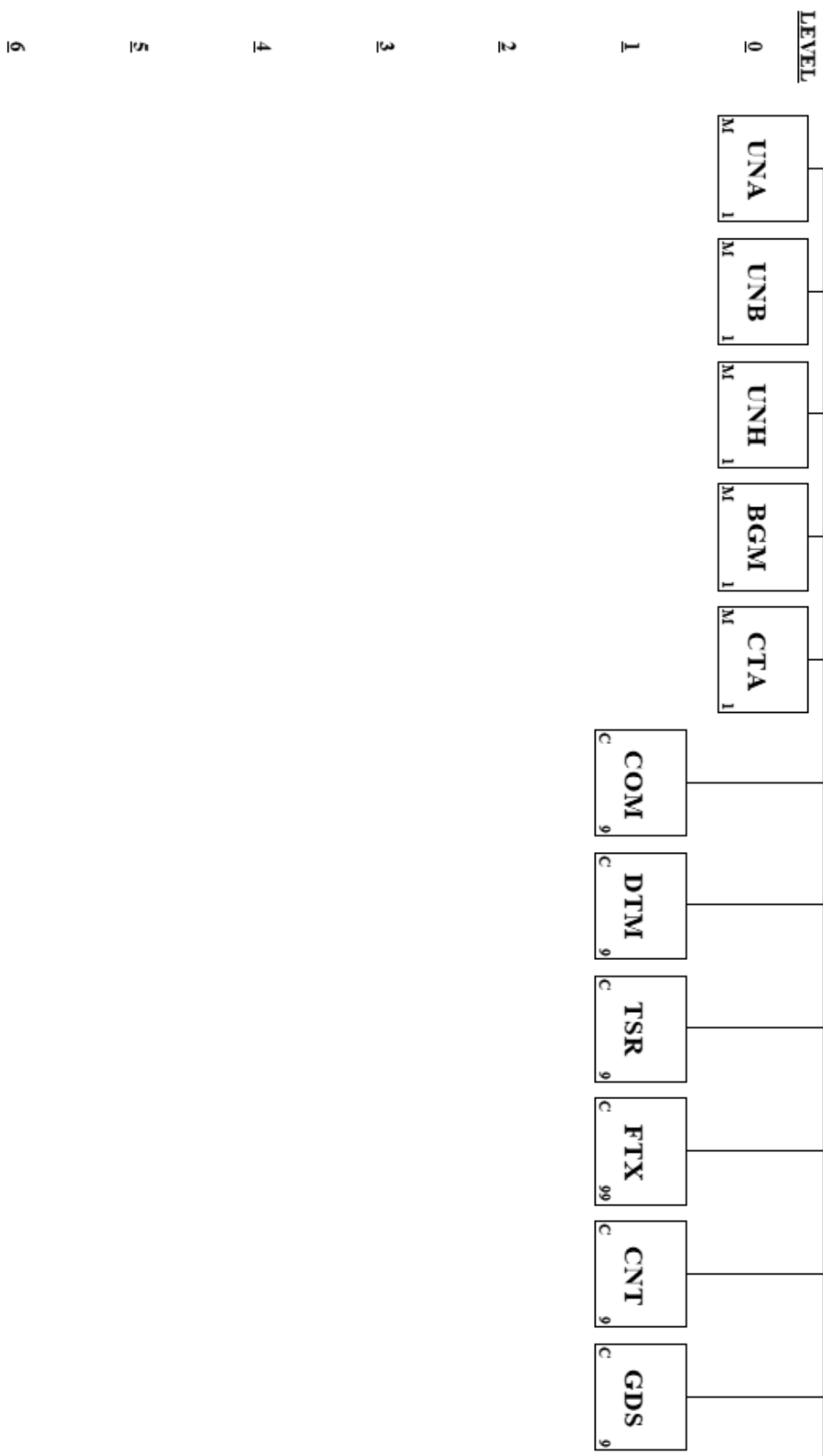
The conditions under which requested services take place may be given in this message.

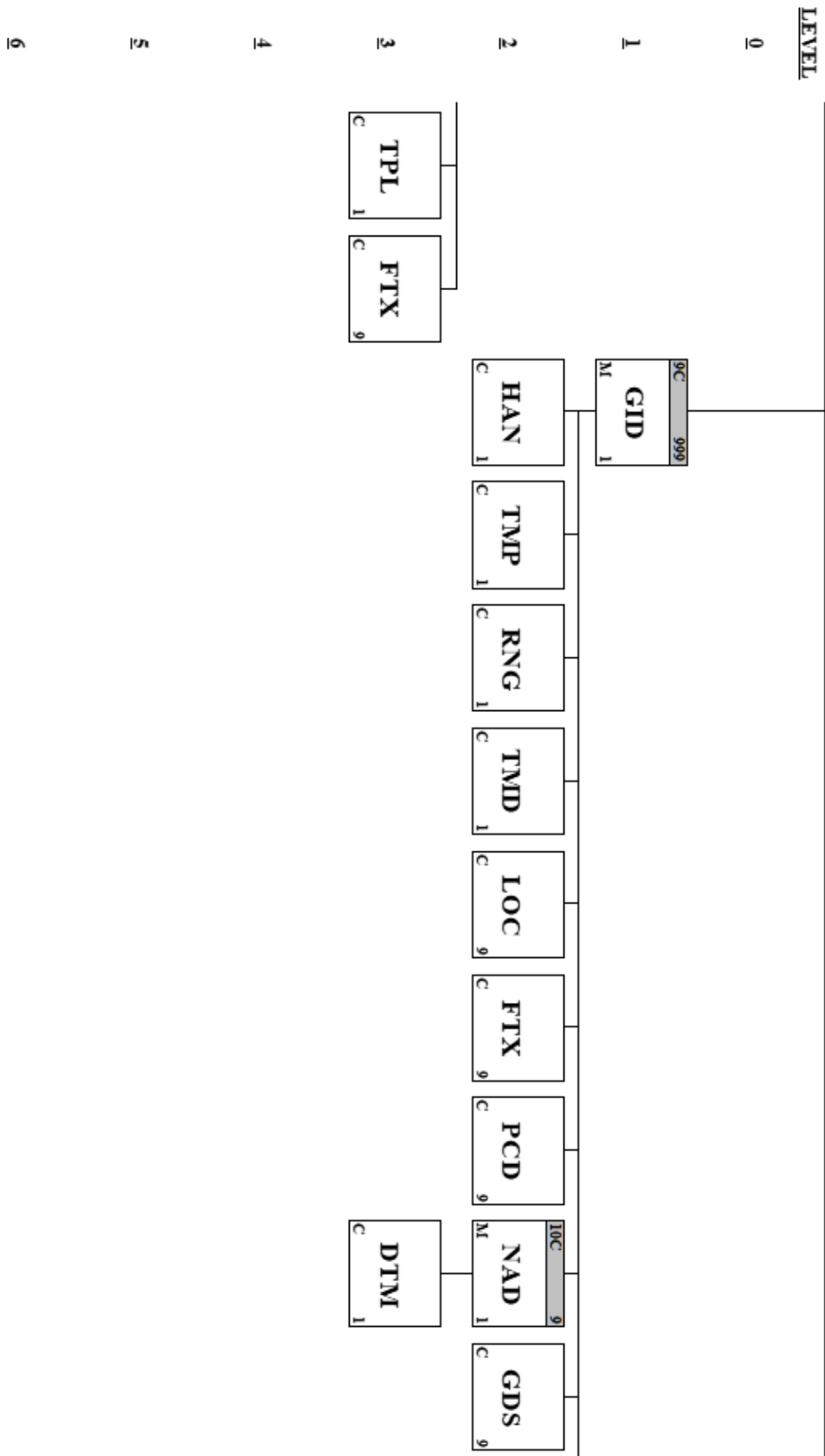
This message can also be used between vessel operators, vessel sharing partners and cargo receiving and handling facilities such as marine terminals, inland receiving depots, rail ramps and truck terminals to confirm cargo particulars and equipment requirements of the transport provider to the service provider responsible for dispatching empty equipment and receiving the cargo.

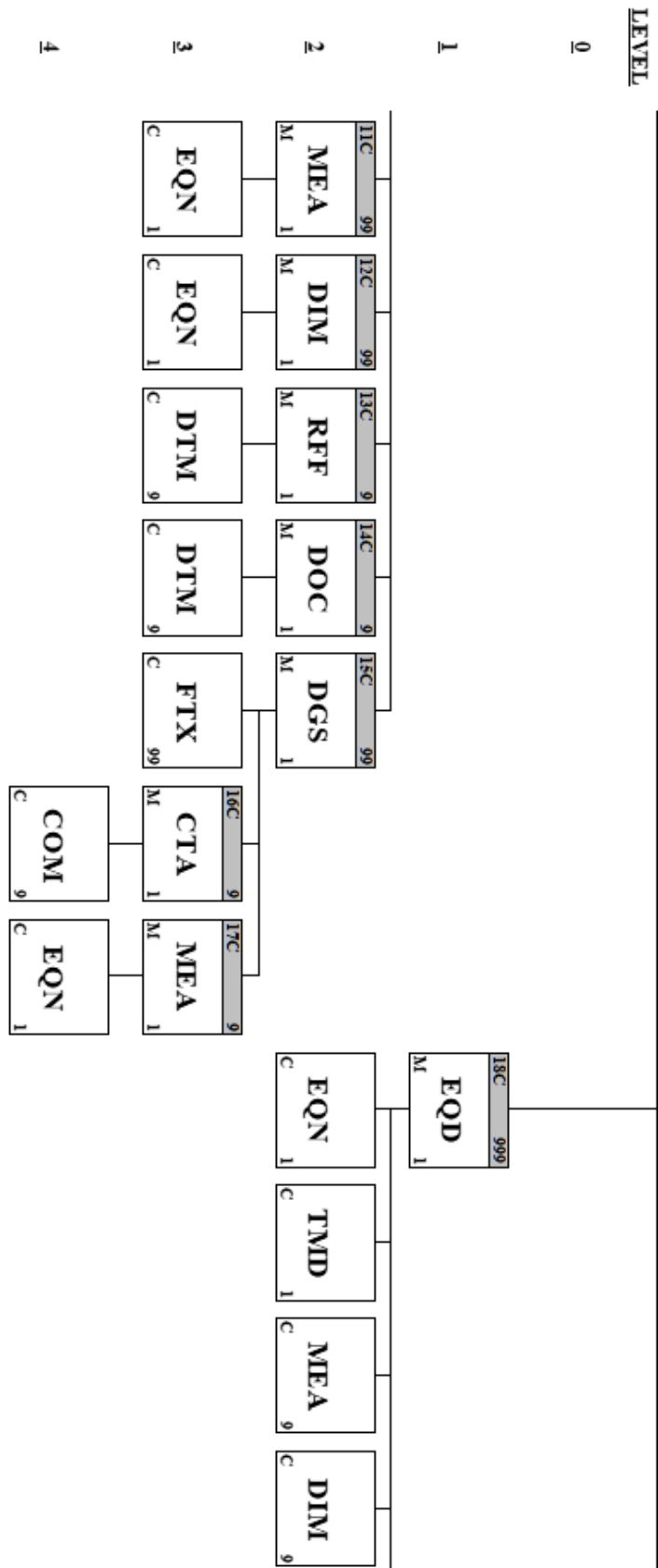
	<u>Pos. No.</u>	<u>Seg. ID</u>	<u>Name</u>	<u>Req. Des.</u>	<u>Max.Use</u>	<u>Group Repeat</u>	<u>Notes and Comments</u>
M	0003	UNA	Service String Advice	M	1		
M	0005	UNB	Interchange Header	M	1		
M	0010	UNH	Message Header	M	1		
M	0020	BGM	Beginning of Message	M	1		
M	0030	CTA	Contact Information	M	1		
	0040	COM	Communication Contact	C	9		
	0050	DTM	Date/Time/Period	C	9		
	0060	TSR	Transport Service Requirements	C	9		
	0070	FTX	Free Text	C	99		
X	0080	CNT	Control Total	C	9		
	0090	GDS	Nature of Cargo	C	9		
X	0100		Segment Group 1: LOC-DTM	C		99	
X	0110	LOC	Place/Location Identification	M	1		
X	0120	DTM	Date/Time/Period	C	9		
	0130		Segment Group 2: RFF-DTM	C		99	
M	0140	RFF	Reference	M	1		
X	0150	DTM	Date/Time/Period	C	9		
X	0160	TCC	Transport Charge/Rate Calculations	C	9		
	0170		Segment Group 3: TDT-DTM-TSR-SG4-SG5	C		99	
M	0180	TDT	Details of Transport	M	1		
X	0190	DTM	Date/Time/Period	C	9		
X	0200	TSR	Transport Service Requirements	C	9		
	0210		Segment Group 4: LOC-DTM	C		99	
M	0220	LOC	Place/Location Identification	M	1		
	0230	DTM	Date/Time/Period	C	9		
X	0240		Segment Group 5: RFF-DTM	C		9	
X	0250	RFF	Reference	M	1		
X	0260	DTM	Date/Time/Period	C	1		
	0270		Segment Group 6: NAD-LOC-SG7-SG8	C		99	
M	0280	NAD	Name and Address	M	1		
X	0290	LOC	Place/Location Identification	C	9		
	0300		Segment Group 7: CTA-COM	C		9	
M	0310	CTA	Contact Information	M	1		

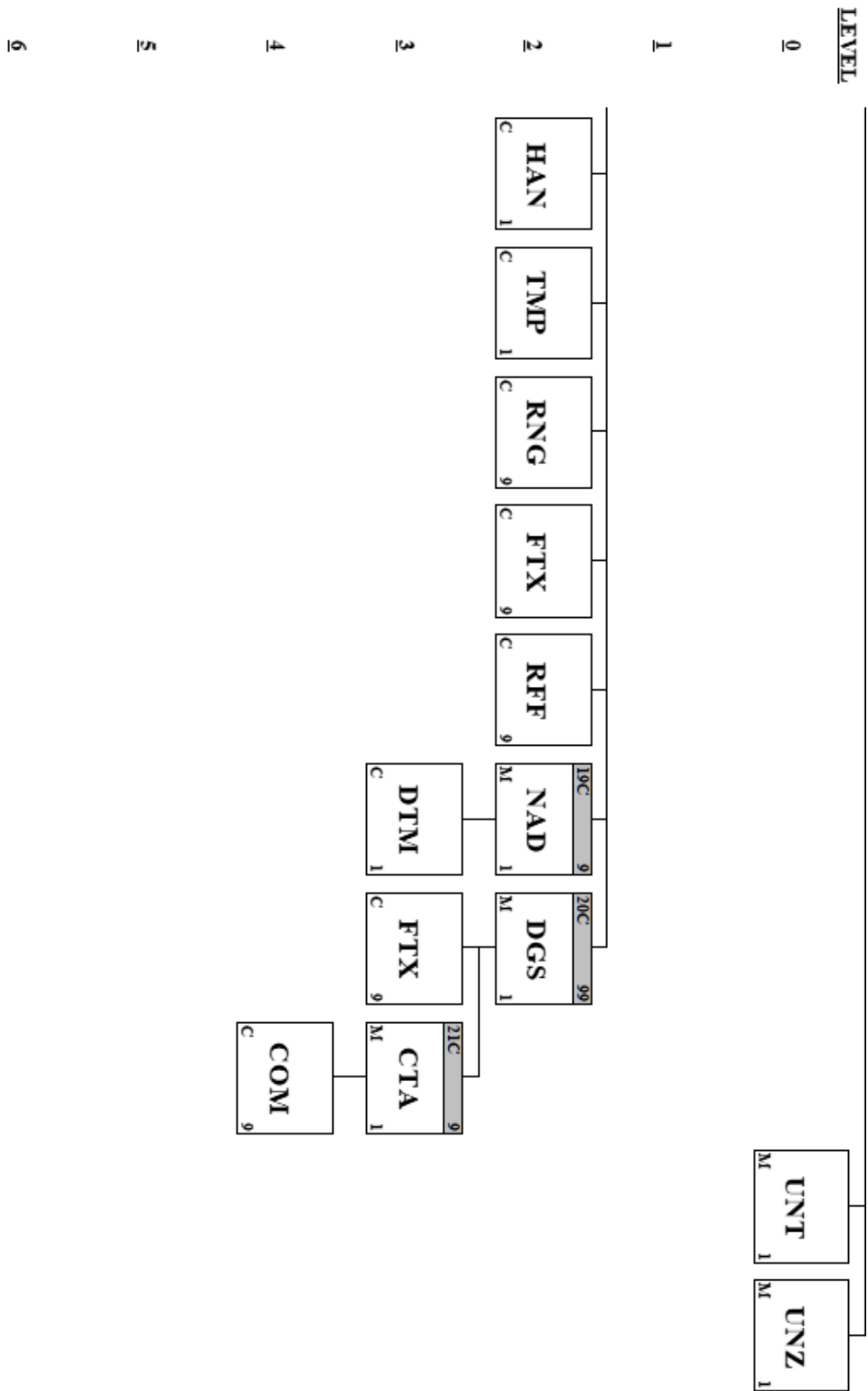
	0320	COM	Communication Contact	C	9
X	0330		Segment Group 8: TSR-RFF-LOC-TPL-FTX	C	99
X	0340	TSR	Transport Service Requirements	M	1
X	0350	RFF	Reference	C	1
X	0360	LOC	Place/Location Identification	C	1
X	0370	TPL	Transport Placement	C	1
X	0380	FTX	Free Text	C	9
	0390		Segment Group 9: GID-HAN-TMP-RNG-TMD-LOC-FTX-PCD- SG10-GDS-SG11-SG12-SG13-SG14-SG15	C	999
M	0400	GID	Goods Item Details	M	1
X	0410	HAN	Handling Instructions	C	1
X	0420	TMP	Temperature	C	1
X	0430	RNG	Range Details	C	1
X	0440	TMD	Transport Movement Details	C	1
X	0450	LOC	Place/Location Identification	C	9
	0460	FTX	Free Text	C	9
X	0470	PCD	Percentage Details	C	9
X	0480		Segment Group 10: NAD-DTM	C	9
X	0490	NAD	Name and Address	M	1
X	0500	DTM	Date/Time/Period	C	1
X	0510	GDS	Nature of Cargo	C	9
	0520		Segment Group 11: MEA-EQN	C	99
M	0530	MEA	Measurements	M	1
X	0540	EQN	Number of Units	C	1
X	0550		Segment Group 12: DIM-EQN	C	99
X	0560	DIM	Dimensions	M	1
X	0570	EQN	Number of Units	C	1
X	0580		Segment Group 13: RFF-DTM	C	9
X	0590	RFF	Reference	M	1
X	0600	DTM	Date/Time/Period	C	9
X	0610		Segment Group 14: DOC-DTM	C	9
X	0620	DOC	Document/Message Details	M	1
X	0630	DTM	Date/Time/Period	C	9
	0640		Segment Group 15: DGS-FTX-SG16-SG17	C	99
M	0650	DGS	Dangerous Goods	M	1
	0660	FTX	Free Text	C	99
	0670		Segment Group 16: CTA-COM	C	9
M	0680	CTA	Contact Information	M	1
	0690	COM	Communication Contact	C	9
	0700		Segment Group 17: MEA-EQN	C	9
M	0710	MEA	Measurements	M	1
X	0720	EQN	Number of Units	C	1
	0730		Segment Group 18: EQD-EQN-TMD-MEA-DIM-HAN-TMP-RNG -FTX-RFF-SG19-SG20	C	999
M	0740	EQD	Equipment Details	M	1
	0750	EQN	Number of Units	C	1

	0760	TMD	Transport Movement Details	C	1
	0770	MEA	Measurements	C	9
	0780	DIM	Dimensions	C	9
	0790	HAN	Handling Instructions	C	1
	0800	TMP	Temperature	C	1
X	0810	RNG	Range Details	C	9
	0820	FTX	Free Text	C	9
X	0830	RFF	Reference	C	9
	0840	Segment Group 19: NAD-DTM		C	9
M	0850	NAD	Name and Address	M	1
	0860	DTM	Date/Time/Period	C	1
	0870	Segment Group 20: DGS-FTX-SG21		C	99
X	0880	DGS	Dangerous Goods	M	1
X	0890	FTX	Free Text	C	9
	0900	Segment Group 21: CTA-COM		C	9
X	0910	CTA	Contact Information	M	1
X	0920	COM	Communication Contact	C	9
M	0930	UNT	Message Trailer	M	1
M	0003	UNZ	Interchange Trailer	M	1









Segment: **UNA Service String Advice**
Position: 0003
Group:
Level: 0
Usage: Mandatory
Max Use: 1
Purpose: To define the characters selected for use as delimiters and indicators in the rest of the interchange that follows.
Comments:
Notes: Example Syntax:

UNA:+.? '

Data Element Summary

<u>Attributes</u>	<u>Data Element</u>	<u>Component Element</u>	<u>Name</u>			
	1		SYNTAX IDENTIFIER	C	1	an1
			Coded identification of the agency controlling a syntax and syntax level used in an interchange.			
	2		SYNTAX VERSION NUMBER	C	1	an1
			Version number of the syntax identified in the syntax identifier (0001).			
	3			C	1	an1
	4		SENDER IDENTIFICATION	C	1	an1
			Name or coded representation of the sender of a data interchange.			
	5			C	1	an1
	6			C	1	an1

Segment: UNB Interchange Header
Position: 0005
Group:
Level: 0
Usage: Mandatory
Max Use: 1
Purpose: To start, identify and specify an interchange
Comments:
Notes:

Example Syntax

UNB+UNOC:3+HS:ZZZ+PARTNERID:ZZZ+070618:0822+2517'

Data Element Summary

<u>Attributes</u>	<u>Data Element</u>	<u>Component Element</u>	<u>Name</u>		
M	S001		SYNTAX IDENTIFIER	M	1
			Identification of the agency controlling the syntax and indication of syntax level.		
M		0001	Syntax identifier	M	a4
			Coded identification of the agency controlling a syntax and syntax level used in an interchange.		
			Provided values:		
			UNOC UN/ECE level C		
			As defined in ISO 8859-1 : Information processing - Part 1: Latin alphabet No. 1.		
M		0002	Syntax version number	M	n1
			Version number of the syntax identified in the syntax identifier (0001).		
			Provided values:		
			2 Version 2		
			ISO 9735:1990.		
M	S002		INTERCHANGE SENDER	M	1
			Identification of the sender of the interchange.		
M		0004	Sender identification	M	an..35
			Name or coded representation of the sender of a data interchange.		
			Provided values:		
			HS Hamburg Süd		
		0007	Partner identification code qualifier	C	an..4
			Qualifier referring to the source of codes for the identifiers of interchanging partners.		
			Provided values:		
			ZZZ Mutually defined		
X		0008	Address for reverse routing	C	an..14
M	S003		INTERCHANGE RECIPIENT	M	1
			Identification of the recipient of the interchange.		
M		0010	Recipient identification	M	an..35
			Name or coded representation of the recipient of a data interchange.		
			Partner ID		
		0007	Partner identification code qualifier	C	an..4
			Qualifier referring to the source of codes for the identifiers of interchanging partners.		
			Provided values:		
			ZZZ Mutually defined		

X		0014	Routing address	C	an..14
M	S004		DATE AND TIME OF PREPARATION	M	1
			Date and time of preparation of the interchange.		
M		0017	Date of preparation	M	n6
			Local date when an interchange or a functional group was prepared.		
M		0019	Time of preparation	M	n4
			Local time of day when an interchange or a functional group was prepared.		
M	0020		INTERCHANGE CONTROL REFERENCE	M	1 an..14
			Unique reference assigned by the sender to an interchange.		
X	S005		RECIPIENTS REFERENCE PASSWORD	C	1
			Reference or password as agreed between the communicating partners.		
X		0022	Recipient reference/password	M	an..14
			Unique reference assigned by the recipient to the data interchange or a password to the recipient's system or to a third party network as specified in the partners interchange agreement.		
X		0025	Recipient reference/password qualifier	C	an2
			Qualifier for the recipient's reference or password.		
			Refer to D.99B Data Element Dictionary for acceptable code values.		
X	0026		APPLICATION REFERENCE	C	1 an..14
X	0029		PROCESSING PRIORITY CODE	C	1 a1
			Refer to D.99B Data Element Dictionary for acceptable code values.		
X	0031		ACKNOWLEDGEMENT REQUEST	C	1 n1
			Refer to D.99B Data Element Dictionary for acceptable code values.		
X	0032		COMMUNICATIONS AGREEMENT ID	C	1 an..35
X	0035		TEST INDICATOR	C	1 n1
			Refer to D.99B Data Element Dictionary for acceptable code values.		

Segment: UNH Message Header
Position: 0010
Group:
Level: 0
Usage: Mandatory
Max Use: 1
Purpose: A service segment starting and uniquely identifying a message. The message type code for the Booking confirmation message is IFTMBC. Note: Booking confirmation messages conforming to this document must contain the following data in segment UNH, composite S009:
 Data element 0065 IFTMBC 0052 D 0054 99B
 0051 UN

Comments:

Notes:

Example Syntax
 UNH+2525+IFTMBC:D:99B:UN:2.0'

Data Element Summary

<u>Attributes</u>	<u>Data Element</u>	<u>Component Element</u>	<u>Name</u>			
M	0062		MESSAGE REFERENCE NUMBER	M	1	an..14
			Unique message reference assigned by the sender.			
M	S009		MESSAGE IDENTIFIER	M	1	
			Identification of the type, version etc. of the message being interchanged.			
M		0065	Message type identifier	M		an..6
			Code identifying a type of message and assigned by its controlling agency.			
			Provided values:			
			IFTMBC			Booking confirmation message
						A code to identify the booking confirmation message.
M		0052	Message type version number	M		an..3
			Version number of a message type.			
			Provided values:			
			D			Draft version/UN/EDIFACT Directory
						Message approved and issued as a draft message (Valid for directories published after March 1993 and prior to March 1997). Message approved as a standard message (Valid for directories published after March 1997).
M		0054	Message type release number	M		an..3
			Release number within the current message type version number (0052).			
			Provided values:			
			99B			Release 1999 - B
						Message approved and issued in the second 1999 release of the UNTDID (United Nations Trade Data Interchange Directory).
M		0051	Controlling agency	M		an..2
			Code identifying the agency controlling the specification, maintenance and publication of the message type.			
			Provided values:			
			UN			UN/CEFACT
						United Nations Centre for the Facilitation of procedures and practices for Administration, Commerce and Transport (UN/CEFACT).
		0057	Association assigned code	C		an..6

Code, assigned by the association responsible for the design and maintenance of the message type concerned, which further identifies the message.

Provided values:

		2.0	Version 2.0		
	0068	COMMON ACCESS REFERENCE		C	1 an..35
		Reference serving as a key to relate all subsequent transfers of data to the same business case or file.			
	S010	STATUS OF THE TRANSFER		C	1
		Statement that the message is one in a sequence of transfers relating to the same topic.			
M	0070	Sequence message transfer number		M	n..2
		Number assigned by the sender indicating that the message is an addition or change of a previously sent message relating to the same topic.			
	0073	First/last sequence message transfer indication		C	a1
		Indication used for the first and last message in a sequence of the same type of message relating to the same topic.			
		Refer to D.99B Data Element Dictionary for acceptable code values.			

Segment:	BGM Beginning of Message
Position:	0020
Group:	
Level:	0
Usage:	Mandatory
Max Use:	1
Purpose:	A segment to indicate the beginning of a message and to transmit identifying number and type of the message.
Comments:	
Notes:	Example Syntax
	BGM+770+174638957+6+AP'

Data Element Summary

<u>Attributes</u>	<u>Data Element</u>	<u>Component Element</u>	<u>Name</u>		
	C002		DOCUMENT/MESSAGE NAME	C	1
			Identification of a type of document/message by code or name. Code preferred.		
M		1001	Document name code	M	an..3
			Code specifying the document name.		
			Provided values:		
			770		Booking confirmation
					Document/message issued by a carrier to confirm that space has been reserved for a consignment in means of transport.
X		1131	Code list identification code	C	an..3
			Refer to D.99B Data Element Dictionary for acceptable code values.		
X		3055	Code list responsible agency code	C	an..3
			Refer to D.99B Data Element Dictionary for acceptable code values.		
X		1000	Document name	C	an..35
	C106		DOCUMENT/MESSAGE IDENTIFICATION	C	1
			Identification of a document/message by its number and eventually its version or revision.		
		1004	Document/message number	C	an..35
			Reference number assigned to the document/message by the issuer.		
			Customer booking number		
X		1056	Version	C	an..9
X		1060	Revision number	C	an..6
M	1225		MESSAGE FUNCTION CODE	M	1 an..3
			Code indicating the function of the message.		
			Provided values:		
			1		Cancellation
					Message cancelling a previous transmission for a given transaction.
			6		Confirmation
					Message confirming the details of a previous transmission where such confirmation is required or recommended under the terms of a trading partner agreement.
	4343		RESPONSE TYPE CODE	C	1 an..3
			Code specifying the type of acknowledgment required or transmitted.		
			Provided values:		
			AJ		Pending

AP

Indication that the referenced offer or transaction (e.g. cargo booking or quotation request) is being dealt with.

Accepted

Indication that the referenced offer or transaction (e.g., cargo booking or quotation request) has been accepted.

Segment: **CTA Contact Information**
Position: 0030
Group:
Level: 0
Usage: Mandatory
Max Use: 1
Purpose: A segment to identify a person or department to whom communication should be directed.
Comments:
Notes: Example Syntax
 CTA+CW+:PETRA JACOBS'

Data Element Summary

<u>Attributes</u>	<u>Data Element</u>	<u>Component Element</u>	<u>Name</u>		
M	3139		CONTACT FUNCTION CODE	M	1 an..3
			Code specifying the function of a contact (e.g. department or person).		
			Provided values:		
			CW		Confirmed with
					Person with whom the contents of the purchase order has been discussed and agreed (e.g. by telephone) prior to the sending of this message.
M	C056		DEPARTMENT OR EMPLOYEE DETAILS	M	1
			Code and/or name of a department or employee. Code preferred.		
X		3413	Department or employee identification	C	an..17
M		3412	Department or employee	M	an..35
			The department or person within an organizational entity.		
			Contact name		

Segment: **COM** Communication Contact
Position: 0040
Group:
Level: 1
Usage: Conditional (Optional)
Max Use: 9
Purpose: A segment to identify a communication number of a person or department to whom communication should be directed.

Comments:
Notes: Example Syntax

COM+?+32-3 205 63 33:TE'

Data Element Summary

<u>Attributes</u>	<u>Data Element</u>	<u>Component Element</u>	<u>Name</u>		
M	C076		COMMUNICATION CONTACT	M	3
			Communication number of a department or employee in a specified channel.		
M		3148	Communication number	M	an..512
			The communication number.		
M		3155	Communication number code qualifier	M	an..3
			Code qualifying the communication number.		
			Provided values:		
			EM		Electronic mail
					Exchange of mail by electronic means.
			FX		Telefax
					Device used for transmitting and reproducing fixed graphic material (as printing) by means of signals over telephone lines or other electronic transmission media.
			TE		Telephone
					Voice/data transmission by telephone.

Segment:	DTM Date/Time/Period
Position:	0050
Group:	
Level:	1
Usage:	Conditional (Optional)
Max Use:	9
Purpose:	A segment to indicate a date and time applying to the whole message, e.g., date and time of document issue.
Comments:	
Notes:	Example Syntax
	DTM+137:201707101618:203'

Data Element Summary

<u>Attributes</u>	<u>Data Element</u>	<u>Component Element</u>	<u>Name</u>		
M	C507		DATE/TIME/PERIOD	M	1
			Date and/or time, or period relevant to the specified date/time/period type.		
M		2005	Date/time/period function code qualifier	M	an..3
			Code giving specific meaning to a date, time or period.		
			Provided values:		
		137	Document/message date/time (2006) Date/time when a document/message is issued. This may include authentication.		
		407	Document requested date/time Date/time on which the document is requested by a party.		
		2380	Date/time/period value	C	an..35
			The value of a date, a date and time, a time or of a period in a specified representation.		
		2379	Date/time/period format code	C	an..3
			Code specifying the representation of a date, time or period.		
			Provided values:		
		203	CCYYMMDDHHMM Calendar date including time with minutes: C=Century; Y=Year; M=Month; D=Day; H=Hour; M=Minutes.		

Segment:	TSR Transport Service Requirements
Position:	0060
Group:	
Level:	1
Usage:	Conditional (Optional)
Max Use:	9
Purpose:	A segment to provide confirmation details of the required transport services.
Comments:	
Notes:	Example Syntax
	TSR+30'

Data Element Summary

<u>Attributes</u>	<u>Data Element</u>	<u>Component Element</u>	<u>Name</u>		
	C536		CONTRACT AND CARRIAGE CONDITION	C	1
			To identify a contract and carriage condition.		
M		4065	Contract and carriage condition code	M	an..3
			Code to identify the conditions of contract and carriage.		
			Provided values:		
			27 Door-to-door		
			The carrier is responsible for the intermodal carriage of cargo including both the pre-carriage and the on-carriage.		
			28 Door-to-pier		
			The carrier is responsible for the intermodal carriage of cargo including the pre-carriage, but excluding the on-carriage.		
			29 Pier-to-door		
			The carrier is responsible for the intermodal carriage of cargo including the on-carriage, but excluding the pre-carriage.		
			30 Pier-to-pier		
			The carrier of intermodal cargo is only responsible for the main carriage.		
X		1131	Code list identification code	C	an..3
			Refer to D.99B Data Element Dictionary for acceptable code values.		
X		3055	Code list responsible agency code	C	an..3
			Refer to D.99B Data Element Dictionary for acceptable code values.		
X	C233		SERVICE	C	1
			To identify a service (which may constitute an additional component to a basic contract).		
X		7273	Service requirement code	M	an..3
			Code specifying a service requirement.		
			Refer to D.99B Data Element Dictionary for acceptable code values.		
X		1131	Code list identification code	C	an..3
			Identification of a code list.		
			Refer to D.99B Data Element Dictionary for acceptable code values.		
X		3055	Code list responsible agency code	C	an..3
			Code specifying the agency responsible for a code list.		
			Refer to D.99B Data Element Dictionary for acceptable code values.		
X		7273	Service requirement code	C	an..3
			Code specifying a service requirement.		
			Refer to D.99B Data Element Dictionary for acceptable code values.		

X		1131	Code list identification code Identification of a code list. Refer to D.99B Data Element Dictionary for acceptable code values.	C	an..3
X		3055	Code list responsible agency code Code specifying the agency responsible for a code list. Refer to D.99B Data Element Dictionary for acceptable code values.	C	an..3
X	C537		TRANSPORT PRIORITY To indicate the priority of requested transport service.	C	1
X		4219	Transport priority, coded Coded priority of requested transport service. Refer to D.99B Data Element Dictionary for acceptable code values.	M	an..3
X		1131	Code list identification code Identification of a code list. Refer to D.99B Data Element Dictionary for acceptable code values.	C	an..3
X		3055	Code list responsible agency code Code specifying the agency responsible for a code list. Refer to D.99B Data Element Dictionary for acceptable code values.	C	an..3
X	C703		NATURE OF CARGO Rough classification of a type of cargo.	C	1
X		7085	Nature of cargo, coded Code indicating the type of cargo as a rough classification. Refer to D.99B Data Element Dictionary for acceptable code values.	M	an..3
X		1131	Code list identification code Identification of a code list. Refer to D.99B Data Element Dictionary for acceptable code values.	C	an..3
X		3055	Code list responsible agency code Code specifying the agency responsible for a code list. Refer to D.99B Data Element Dictionary for acceptable code values.	C	an..3

Segment: **FTX** Free Text
Position: 0070
Group:
Level: 1
Usage: Conditional (Optional)
Max Use: 99
Purpose: A segment to specify free form or processable supplementary information, such as status of transport, remarks to be printed on the transport documents (where required), consignment remarks, insurance instructions, etc., or any other additional information.

Comments:

Notes: Example Syntax

FTX+AAI+++EX SWANA'

Data Element Summary

<u>Attributes</u>	<u>Data Element</u>	<u>Component Element</u>	<u>Name</u>			
M	4451		TEXT SUBJECT CODE QUALIFIER	M	1	an..3
			Code specifying the subject of the text.			
			Provided values:			
			AAI General information			
			ABD Nature of transaction			
			An indication for customs of the type of contract under which goods are supplied.			
X	4453		TEXT FUNCTION, CODED	C	1	an..3
			Refer to D.99B Data Element Dictionary for acceptable code values.			
X	C107		TEXT REFERENCE	C	1	
			Coded reference to a standard text and its source.			
X		4441	Free text value code	M		an..17
			Code specifying free form text.			
X		1131	Code list identification code	C		an..3
			Identification of a code list.			
			Refer to D.99B Data Element Dictionary for acceptable code values.			
X		3055	Code list responsible agency code	C		an..3
			Code specifying the agency responsible for a code list.			
			Refer to D.99B Data Element Dictionary for acceptable code values.			
	C108		TEXT LITERAL	C	1	
			Free text; one to five lines.			
M		4440	Free text value	M		an..512
			Free form text.			
			Read all E_BKG_REMARK Items in \MESSAGE_BODY\BOOKING\BKG_REMARK. Special handling if result = 0.			
			if (exist(E_BKG_REMARK)) Then value = E_BKG_REMARK else value = "NO COMMENT AVAILABLE"			
			Split booking information			
			if (exist(PARENT_BOOKING_NO)) Then value = "SPLIT OF THE ORIGINAL REQUEST " +			

CUSTOMER_BOOKING_NO				
X		4440	Free text value	C an..512
X		4440	Free text value	C an..512
X		4440	Free text value	C an..512
X		4440	Free text value	C an..512
X	3453		LANGUAGE NAME CODE	C 1 an..3
X	4447		TEXT FORMATTING, CODED	C 1 an..3

Refer to D.99B Data Element Dictionary for acceptable code values.

Segment: **GDS Nature of Cargo**
Position: 0090
Group:
Level: 1
Usage: Conditional (Optional)
Max Use: 9
Purpose: A segment to describe the nature of cargo.

Comments:

Notes: Example Syntax

GDS+11'

Data Element Summary

	<u>Data Element</u>	<u>Component Element</u>	<u>Name</u>		
	C703		NATURE OF CARGO	C	1
			Rough classification of a type of cargo.		
M		7085	Nature of cargo, coded	M	an..3
			Code indicating the type of cargo as a rough classification.		
			Provided values:		
			5 Other non-containerized Non-containerized cargo which cannot be categorized by any of the other nature of cargo code.		
			11 Hazardous cargo Cargo with dangerous properties, according to appropriate dangerous goods regulations.		
			14 Temperature controlled cargo Cargo transported under specified temperature conditions.		
			15 Environmental pollutant cargo Cargo is an environmental pollutant.		
X		1131	Code list identification code	C	an..3
			Refer to D.99B Data Element Dictionary for acceptable code values.		
X		3055	Code list responsible agency code	C	an..3
			Refer to D.99B Data Element Dictionary for acceptable code values.		

Group: **RFF** Segment Group 2: Reference
Position: 0130
Group:
Level: 1
Usage: Conditional (Optional)
Max Use: 99
Purpose: A group of segments containing a reference and constants which apply to the entire message.

Segment Summary

	<u>Pos. No.</u>	<u>Seg. ID</u>	<u>Name</u>	<u>Req. Des.</u>	<u>Max. Use</u>	<u>Group: Repeat</u>
M	0140	RFF	Reference	M	1	

Segment: **RFF Reference**
Position: 0140 (Trigger Segment)
Group: Segment Group 2 (Reference) Conditional (Optional)
Level: 1
Usage: Mandatory
Max Use: 1
Purpose: A segment to express a reference which applies to the entire message such as: the document/message number that is to be updated by this very message (according to data element 1225 Message function code in segment BGM), booking reference, order number, insurance contract, etc.

Comments:**Notes:**

Example Syntax

```

RFF+CT:REUR600505'
RFF+FF:5116027070020'
RFF+SI:5116027070020'
RFF+BN:7HAMSA2192'
  
```

Data Element Summary

<u>Attributes</u>	<u>Data Element</u>	<u>Component Element</u>	<u>Name</u>		
M	C506		REFERENCE	M	1
			Identification of a reference.		
M		1153	Reference function code qualifier	M	an..3
			Code giving specific meaning to a reference segment or a reference number.		
			Provided values:		
			AGB		Contract party reference number
					Reference number assigned to a party for a particular contract.
			AGE		Agent's reference
					Reference number of the agent.
			AKG		Vehicle Identification Number (VIN)
					The identification number which uniquely distinguishes one vehicle from another through the lifespan of the vehicle.
			ANT		Consignee's reference
					Reference number of the consignee.
			BM		Bill of lading number
					Reference number assigned to a bill of lading, see: 1001 = 705.
			BN		Booking reference number
					[1016] Reference number assigned by the carrier or his agent when cargo space is reserved prior to loading.
			CT		Contract number
					Reference number of a contract concluded between parties.
			EX		Export licence number
					[1208] Reference number assigned by issuing authority to an Export Licence.
			FF		Freight forwarder's reference number
					[1460] Reference number assigned to the consignment by the freight forwarder.
			ON		Order number (purchase)

[1022] Reference number assigned by the buyer to an order.

SI

SID (Shipper's identifying number for shipment)

Description to be provided.

	1154	Reference identifier	C	an..35
		Identifies a reference.		
X	1156	Line number	C	an..6
X	4000	Reference version identifier	C	an..35
X	1060	Revision number	C	an..6

Group: **TDT Segment Group 3: Details of Transport**
Position: 0170
Group:
Level: 1
Usage: Conditional (Optional)
Max Use: 99
Purpose: A group of segments to indicate details of the movement of goods such as mode and means of transport, locations, departure, and arrival date(s) and time(s).

Segment Summary

	<u>Pos. No.</u>	<u>Seg. ID</u>	<u>Name</u>	<u>Req. Des.</u>	<u>Max. Use</u>	<u>Group: Repeat</u>
M	0180	TDT	Details of Transport	M	1	
	0210		Segment Group 4: Place/Location Identification	C		99

Segment: **TDT Details of Transport**
Position: 0180 (Trigger Segment)
Group: Segment Group 3 (Details of Transport) Conditional (Optional)
Level: 1
Usage: Mandatory
Max Use: 1
Purpose: A segment to indicate information related to a certain stage of the transport, such as mode, means and carrier.
Comments:
Notes: Example Syntax

```
TDT+20+729S+1+8:MAIN CARRIAGE+SUDU:172:182+++9214202::11:E.R.
LONDON:LR'
```

Data Element Summary

<u>Attributes</u>	<u>Data Element</u>	<u>Component Element</u>	<u>Name</u>			
M	8051		TRANSPORT STAGE CODE QUALIFIER	M	1	an..3
			Code qualifying a specific stage of transport.			
			Provided values:			
			10 Pre-carriage transport			
			Transport by which the goods are moved prior to their main carriage transport.			
			20 Main-carriage transport			
			The primary stage in the movement of cargo from the point of origin to the intended destination.			
			30 On-carriage transport			
			Transport by which the goods are moved after the main carriage transport.			
	8028		CONVEYANCE REFERENCE NUMBER	C	1	an..17
			Unique reference given by the carrier to a certain journey or departure of a means of transport (generic term).			
			Voyage number			
	C220		MODE OF TRANSPORT	C	1	
			Method of transport code or name. Code preferred.			
		8067	Transport mode name code	C		an..3
			Code specifying the name of a mode of transport.			
			Provided values:			
			1 Maritime transport			
			2 Rail transport			
			3 Road transport			
			8 Inland water transport			
			23 Rail/road			
			38 Road/water			
X		8066	Transport mode name	C		an..17
	C228		TRANSPORT MEANS	C	1	
			Code and/or name identifying the type of means of transport.			
		8179	Transport means description code	C		an..8
			Code specifying the means of transport.			
			Hamburg Süd set the description code only in the cases of vessel/feeder transport			
			Provided values:			
			8 Container ship			

Vessel capable of carrying containers and other cargo.

		8178	Transport means description	C	an..17
			Free form description of the means of transport.		
			Provided values:		
			"PRE CARRIAGE"		
			"PREC FEEDER"		
			"MAIN CARRIAGE"		
			"ON CARRIAGE"		
			"ONC FEEDER"		
	C040		CARRIER	C	1
			Identification of a carrier by code and/or by name. Code preferred.		
		3127	Carrier identification	C	an..17
			Identification of party undertaking or arranging transport of goods between named points.		
			Provided values:		
			ANRM Alianca		
			CCNR CCNI		
			SUDU Hamburg Süd		
		1131	Code list identification code	C	an..3
			Identification of a code list.		
			Provided values:		
			172 Carriers		
			Code list identifying carriers.		
		3055	Code list responsible agency code	C	an..3
			Code specifying the agency responsible for a code list.		
			Provided values:		
			182 US, Standard Carrier Alpha Code (Motor)		
			Organisation maintaining the SCAC lists and transportation operating in North America.		
X		3128	Carrier name	C	an..35
X	8101		TRANSIT DIRECTION INDICATOR CODE	C	1 an..3
			Refer to D.99B Data Element Dictionary for acceptable code values.		
X	C401		EXCESS TRANSPORTATION INFORMATION	C	1
			To provide details of reason for, and responsibility for, use of transportation other than normally utilized.		
X		8457	Excess transportation reason, coded	M	an..3
			Indication of reason for excess transportation.		
			Refer to D.99B Data Element Dictionary for acceptable code values.		
X		8459	Excess transportation responsibility, coded	M	an..3
			Indication of responsibility for excess transportation.		
			Refer to D.99B Data Element Dictionary for acceptable code values.		
X		7130	Customer authorization number	C	an..17
			Customer provided authorization number to allow supplier to ship goods under specific freight conditions. This number will be transmitted back to customer in the dispatch advice message.		
	C222		TRANSPORT IDENTIFICATION	C	1
			Code and/or name identifying the means of transport.		
		8213	Transport means identification name identifier	C	an..9
			Identifies the name of the transport means.		
			Lloyd's Code		

X	1131	Code list identification code	C	an..3
		Refer to D.99B Data Element Dictionary for acceptable code values.		
	3055	Code list responsible agency code	C	an..3
		Code specifying the agency responsible for a code list.		
		Provided values:		
		11	Lloyd's register of shipping A register of ocean going vessels maintained by Lloyd's of London.	
	8212	Transport means identification name	C	an..35
		Name identifying a means of transport.		
		Vessel Name		
	8453	Nationality of means of transport, coded	C	an..3
		Coded name of the country in which a means of transport is registered.		
		Valid 2 Character ISO Country Code of Ship's Registry		
X	8281	TRANSPORT OWNERSHIP, CODED	C	1 an..3
		Refer to D.99B Data Element Dictionary for acceptable code values.		

Group: **LOC Segment Group 4: Place/Location Identification**
Position: 0210
Group: Segment Group 3 (Details of Transport) Conditional (Optional)
Level: 2
Usage: Conditional (Optional)
Max Use: 99
Purpose: A group of segments to specify a location and date/time related to this leg of transport.

Segment Summary

	<u>Pos. No.</u>	<u>Seg. ID</u>	<u>Name</u>	<u>Req. Des.</u>	<u>Max. Use</u>	<u>Group: Repeat</u>
M	0220	LOC	Place/Location Identification	M	1	
	0230	DTM	Date/Time/Period	C	9	

Segment:	LOC Place/Location Identification	
Position:	0220 (Trigger Segment)	
Group:	Segment Group 4 (Place/Location Identification)	Conditional (Optional)
Level:	2	
Usage:	Mandatory	
Max Use:	1	
Purpose:	A segment to indicate a location such as origin, destination, stop off, etc. related to this leg of transport.	
Comments:		
Notes:	Example Syntax	
	LOC+9+BEANR:139:6:ANTWERP BE'	

Data Element Summary

<u>Attributes</u>	<u>Data Element</u>	<u>Component Element</u>	<u>Name</u>			
M	3227		LOCATION FUNCTION CODE QUALIFIER	M	1	an..3
			Code identifying the function of a location.			
			Provided values:			
		9	Place/port of loading (3334 + 3230) Seaport, airport, freight terminal, rail station or other place at which the goods (cargo) are loaded on to the means of transport being used for their carriage.			
		11	Place/port of discharge (3392 + 3414) Seaport, airport, freight terminal, rail station or other place at which the goods (cargo) are unloaded from the means of transport having been used for their carriage.			
	C517		LOCATION IDENTIFICATION	C	1	
			Identification of a location by code or name.			
		3225	Location name code	C		an..25
			Code specifying the name of the location.			
			UN location code			
		1131	Code list identification code	C		an..3
			Identification of a code list.			
			Provided values:			
		139	Port A location having facilities for means of transport to load or discharge cargo.			
		3055	Code list responsible agency code	C		an..3
			Code specifying the agency responsible for a code list.			
			Provided values:			
		6	UN/ECE (United Nations - Economic Commission for Europe)			
		3224	Location name	C		an..256
			Name of the location.			
X	C519		RELATED LOCATION ONE IDENTIFICATION	C	1	
			Identification the first related location by code or name.			
X		3223	Related place/location one identification	C		an..25
			Specification of the first related place/location by code.			
X		1131	Code list identification code	C		an..3
			Identification of a code list.			
			Refer to D.99B Data Element Dictionary for acceptable code values.			

X		3055	Code list responsible agency code	C	an..3
			Code specifying the agency responsible for a code list. Refer to D.99B Data Element Dictionary for acceptable code values.		
X		3222	Related place/location one	C	an..70
			Specification of the first related place/location by name.		
X	C553		RELATED LOCATION TWO IDENTIFICATION	C	1
			Identification of second related location by code or name.		
X		3233	Related place/location two identification	C	an..25
			Specification of a second related place/location by code.		
X		1131	Code list identification code	C	an..3
			Identification of a code list. Refer to D.99B Data Element Dictionary for acceptable code values.		
X		3055	Code list responsible agency code	C	an..3
			Code specifying the agency responsible for a code list. Refer to D.99B Data Element Dictionary for acceptable code values.		
X		3232	Related place/location two	C	an..70
			Specification of a second related place/location by name.		
X	5479		RELATION, CODED	C	1 an..3

Segment: **DTM Date/Time/Period**
Position: 0230
Group: Segment Group 4 (Place/Location Identification) Conditional (Optional)
Level: 3
Usage: Conditional (Optional)
Max Use: 9
Purpose: A segment to specify a date/time related to the location, such as arrival date/time of a means of transport at a specific location.

Comments:

Notes: Example Syntax

DTM+133:200704010400:203

Data Element Summary

<u>Attributes</u>	<u>Data Element</u>	<u>Component Element</u>	<u>Name</u>		
M	C507		DATE/TIME/PERIOD	M	1
			Date and/or time, or period relevant to the specified date/time/period type.		
M		2005	Date/time/period function code qualifier	M	an..3
			Code giving specific meaning to a date, time or period.		
			Provided values:		
			132		Arrival date/time, estimated (2348) Date/time when carrier estimates that a means of transport should arrive at the port of discharge or place of destination.
			133		Departure date/time, estimated Date/time when carrier estimates that a means of transport should depart at the place of departure.
			180		Closing date/time Final date for delivering cargo to a liner ship.
					Cargo CutOff
		2380	Date/time/period value	C	an..35
			The value of a date, a date and time, a time or of a period in a specified representation.		
			direct		
		2379	Date/time/period format code	C	an..3
			Code specifying the representation of a date, time or period.		
			Provided values:		
			203		CCYYMMDDHHMM Calendar date including time with minutes: C=Century; Y=Year; M=Month; D=Day; H=Hour; M=Minutes.

Group: **NAD Segment Group 6: Name and Address**
Position: 0270
Group:
Level: 1
Usage: Conditional (Optional)
Max Use: 99
Purpose: A group of segments to identify a party, related references, locations contacts, required documents, and charges to be paid by the party.

Segment Summary

	<u>Pos. No.</u>	<u>Seg. ID</u>	<u>Name</u>	<u>Req. Des.</u>	<u>Max. Use</u>	<u>Group: Repeat</u>
M	0280	NAD	Name and Address	M	1	
	0300		Segment Group 7: Contact Information	C		9

Segment: **NAD Name and Address**
Position: 0280 (Trigger Segment)
Group: Segment Group 6 (Name and Address) Conditional (Optional)
Level: 1
Usage: Mandatory
Max Use: 1
Purpose: A segment to identify the party's name, address, and function.
Comments:
Notes:

Example Syntax

NAD+CA+SUDU:160:87+HAMBURG SUED'

Data Element Summary

<u>Attributes</u>	<u>Data Element</u>	<u>Component Element</u>	<u>Name</u>			
M	3035		PARTY FUNCTION CODE QUALIFIER	M	1	an..3
			Code giving specific meaning to a party.			
			Provided values:			
		CA	Carrier (3126) Party undertaking or arranging transport of goods between named points.			
		CN	Consignee (3132) Party to which goods are consigned.			
		CZ	Consignor (3336) Party which, by contract with a carrier, consigns or sends goods with the carrier, or has them conveyed by him. Synonym: shipper, sender.			
		FC	Contractor, main Firm or grouping of co-contractors which has been awarded the contract.			
		FW	Freight forwarder Party arranging forwarding of goods.			
		N1	Notify party no. 1 The first party which is to be notified.			
		N2	Notify party no. 2 The second party which is to be notified.			
		NI	Notify party (3180) Party to be notified of arrival of goods.			
	C082		PARTY IDENTIFICATION DETAILS	C	1	
			Identification of a transaction party by code.			
M	3039		Party identifier	M		an..35
			Code specifying the identity of a party.			
			In case of Pary "CA" the following values are provided:			
			ANRM = Alianca CCNR = CCNI HS = Hamburg Süd			
	1131		Code list identification code	C		an..3
			Identification of a code list.			
			Provided values:			
		160	Party identification Identification of parties, corporates, etc.			
	3055		Code list responsible agency code	C		an..3

Code specifying the agency responsible for a code list.

Provided values:

87	Assigned by carrier Codes assigned by the carrier.
192	Shipper's association Code assigned by a shipper's association.

	C058	NAME AND ADDRESS	C	1
		Unstructured name and address: one to five lines.		
M	3124	Name and address line	M	an..35
		Free form name and address description.		
		In case of Pary "CA" the following values are provided:		
		ALIANCA HAMBURG SÜED CCNI		
	3124	Name and address line	C	an..35
		Free form name and address description.		
		direct		
	3124	Name and address line	C	an..35
		Free form name and address description.		
		direct		
X	3124	Name and address line	C	an..35
X	3124	Name and address line	C	an..35
X	C080	PARTY NAME	C	1
		Identification of a transaction party by name, one to five lines. Party name may be formatted.		
X	3036	Party name	M	an..35
		Name of a party involved in a transaction.		
		Provided values:		
		35		
X	3036	Party name	C	an..35
X	3036	Party name	C	an..35
X	3036	Party name	C	an..35
X	3036	Party name	C	an..35
X	3045	Party name format code	C	an..3
		Refer to D.99B Data Element Dictionary for acceptable code values.		
	C059	STREET	C	1
		Street address and/or PO Box number in a structured address: one to four lines.		
M	3042	Street and number/p.o. box	M	an..35
		Street and number in plain language, or Post Office Box No.		
	3042	Street and number/p.o. box	C	an..35
		Street and number in plain language, or Post Office Box No.		
X	3042	Street and number/p.o. box	C	an..35
X	3042	Street and number/p.o. box	C	an..35
X	3164	CITY NAME	C	1 an..35
X	C819	COUNTRY SUB-ENTITY DETAILS	C	1
		To specify a part of a country (eg county or part of a city).		
X	3229	Country sub-entity name code	C	an..9
		Identification of the name of sub-entities (state, province) defined by appropriate governmental agencies.		
X	1131	Code list identification code	C	an..3

		Identification of a code list. Refer to D.99B Data Element Dictionary for acceptable code values.		
X	3055	Code list responsible agency code	C	an..3
		Code specifying the agency responsible for a code list. Refer to D.99B Data Element Dictionary for acceptable code values.		
X	3228	Country sub-entity name	C	an..35
		Name of sub-entities (state, province) defined by appropriate governmental agencies.		
	3251	POSTAL IDENTIFICATION CODE	C	1 an..17
		Code specifying the postal zone or address.		
	3207	COUNTRY NAME CODE	C	1 an..3
		Identification of the name of the country or other geographical entity as specified in ISO 3166.		

Group: **CTA Segment Group 7: Contact Information**
Position: 0300
Group: Segment Group 6 (Name and Address) Conditional (Optional)
Level: 2
Usage: Conditional (Optional)
Max Use: 9
Purpose: A group of segments to identify a contact and its communications related to the party.

Segment Summary

	<u>Pos. No.</u>	<u>Seg. ID</u>	<u>Name</u>	<u>Req. Des.</u>	<u>Max. Use</u>	<u>Group: Repeat</u>
M	0310	CTA	Contact Information	M	1	
	0320	COM	Communication Contact	C	9	

Segment: **CTA Contact Information**
Position: 0310 (Trigger Segment)
Group: Segment Group 7 (Contact Information) Conditional (Optional)
Level: 2
Usage: Mandatory
Max Use: 1
Purpose: A segment to identify a person or department within the party.
Comments:
Notes: Example Syntax
 CTA+IC+:RUBEN'

Data Element Summary

	<u>Data Element</u>	<u>Component Element</u>	<u>Name</u>		
	3139		CONTACT FUNCTION CODE	C	1 an..3
			Code specifying the function of a contact (e.g. department or person).		
			Provided values:		
		IC	Information contact		
			Department/person to contact for questions regarding transactions.		
	C056		DEPARTMENT OR EMPLOYEE DETAILS	C	1
			Code and/or name of a department or employee. Code preferred.		
X		3413	Department or employee identification	C	an..17
		3412	Department or employee	C	an..35
			The department or person within an organizational entity.		

Segment: **COM Communication Contact**
Position: 0320
Group: Segment Group 7 (Contact Information) Conditional (Optional)
Level: 3
Usage: Conditional (Optional)
Max Use: 9
Purpose: A segment to identify a communication number of a person or department to whom communication should be directed.

Comments:**Notes:**

Example Syntax

COM+?+32 3 203 59 11:TE

COM+?+32 3 203 59 45:FX

COM+RUBEN.VANDEMOORTELE@FMS-LOGISTICS.COM:EM

Data Element Summary

<u>Attributes</u>	<u>Data Element</u>	<u>Component Element</u>	<u>Name</u>		
M	C076		COMMUNICATION CONTACT	M	3
			Communication number of a department or employee in a specified channel.		
M		3148	Communication number	M	an..512
			The communication number.		
M		3155	Communication number code qualifier	M	an..3
			Code qualifying the communication number.		
			Provided values:		
		EM	Electronic mail		
			Exchange of mail by electronic means.		
		FX	Telefax		
			Device used for transmitting and reproducing fixed graphic material (as printing) by means of signals over telephone lines or other electronic transmission media.		
		TE	Telephone		
			Voice/data transmission by telephone.		

Group: **GID Segment Group 9: Goods Item Details**
Position: 0390
Group:
Level: 1
Usage: Conditional (Optional)
Max Use: 999
Purpose: A group of segments to describe the goods items for which transport is undertaken.

Segment Summary

	<u>Pos. No.</u>	<u>Seg. ID</u>	<u>Name</u>	<u>Req. Des.</u>	<u>Max. Use</u>	<u>Group: Repeat</u>
M	0400	GID	Goods Item Details	M	1	
	0460	FTX	Free Text	C	9	
	0520		Segment Group 11: Measurements	C		99
	0640		Segment Group 15: Dangerous Goods	C		99

Segment: **GID Goods Item Details**
Position: 0400 (Trigger Segment)
Group: Segment Group 9 (Goods Item Details) Conditional (Optional)
Level: 1
Usage: Mandatory
Max Use: 1
Purpose: A segment to identify a goods item for which transport is undertaken. A goods item can be identified by up to three levels of packaging.

Comments:

Notes: Used to indicate the Outer package type and quantity.
 Inner & Inner Inner Package are not used

Example Syntax

GID+1+1:PK:67:6:PACKAGE'

Data Element Summary

	<u>Data Element</u>	<u>Component Element</u>	<u>Name</u>			
	1496		GOODS ITEM NUMBER	C	1	n..5
			Serial number differentiating each separate goods item entry of a consignment as contained in one document/declaration.			
	C213		NUMBER AND TYPE OF PACKAGES	C	1	
			Number and type of individual parts of a shipment.			
M		7224	Number of packages	M		n..8
			Number of individual parts of a shipment either unpacked, or packed in such a way that they cannot be divided without first undoing the packing.			
			1			
		7065	Package type description code	C		an..17
			Code specifying the type of package.			
			Provided values:			
			PK			
		1131	Code list identification code	C		an..3
			Identification of a code list.			
			Provided values:			
			67		Type of package	
					Indication of the type of package codes.	
		3055	Code list responsible agency code	C		an..3
			Code specifying the agency responsible for a code list.			
			Provided values:			
			6		UN/ECE (United Nations - Economic Commission for Europe)	
		7064	Type of packages	C		an..35
			Description of the form in which goods are presented.			
			Provided values:			
			PACKAGE			
X		7233	Packaging related description code	C		an..3
			Refer to D.99B Data Element Dictionary for acceptable code values.			
X	C213		NUMBER AND TYPE OF PACKAGES	C	1	
			Number and type of individual parts of a shipment.			
X		7224	Number of packages	C		n..8
			Number of individual parts of a shipment either unpacked, or packed in such a way that they cannot be divided without first undoing the packing.			

X		7065	Package type description code Code specifying the type of package.	C	an..17
X		1131	Code list identification code Identification of a code list. Refer to D.99B Data Element Dictionary for acceptable code values.	C	an..3
X		3055	Code list responsible agency code Code specifying the agency responsible for a code list. Refer to D.99B Data Element Dictionary for acceptable code values.	C	an..3
X		7064	Type of packages Description of the form in which goods are presented.	C	an..35
X		7233	Packaging related description code Code specifying information related to packaging. Refer to D.99B Data Element Dictionary for acceptable code values.	C	an..3
X	C213		NUMBER AND TYPE OF PACKAGES Number and type of individual parts of a shipment.	C	1
X		7224	Number of packages Number of individual parts of a shipment either unpacked, or packed in such a way that they cannot be divided without first undoing the packing.	C	n..8
X		7065	Package type description code Code specifying the type of package.	C	an..17
X		1131	Code list identification code Identification of a code list. Refer to D.99B Data Element Dictionary for acceptable code values.	C	an..3
X		3055	Code list responsible agency code Code specifying the agency responsible for a code list. Refer to D.99B Data Element Dictionary for acceptable code values.	C	an..3
X		7064	Type of packages Description of the form in which goods are presented.	C	an..35
X		7233	Packaging related description code Code specifying information related to packaging. Refer to D.99B Data Element Dictionary for acceptable code values.	C	an..3
X	C213		NUMBER AND TYPE OF PACKAGES Number and type of individual parts of a shipment.	C	1
X		7224	Number of packages Number of individual parts of a shipment either unpacked, or packed in such a way that they cannot be divided without first undoing the packing.	C	n..8
X		7065	Package type description code Code specifying the type of package.	C	an..17
X		1131	Code list identification code Identification of a code list. Refer to D.99B Data Element Dictionary for acceptable code values.	C	an..3
X		3055	Code list responsible agency code Code specifying the agency responsible for a code list. Refer to D.99B Data Element Dictionary for acceptable code values.	C	an..3
X		7064	Type of packages Description of the form in which goods are presented.	C	an..35
X		7233	Packaging related description code Code specifying information related to packaging. Refer to D.99B Data Element Dictionary for acceptable code values.	C	an..3
X	C213		NUMBER AND TYPE OF PACKAGES Number and type of individual parts of a shipment.	C	1

X	7224	Number of packages	C	n..8
		Number of individual parts of a shipment either unpacked, or packed in such a way that they cannot be divided without first undoing the packing.		
X	7065	Package type description code	C	an..17
		Code specifying the type of package.		
X	1131	Code list identification code	C	an..3
		Identification of a code list. Refer to D.99B Data Element Dictionary for acceptable code values.		
X	3055	Code list responsible agency code	C	an..3
		Code specifying the agency responsible for a code list. Refer to D.99B Data Element Dictionary for acceptable code values.		
X	7064	Type of packages	C	an..35
		Description of the form in which goods are presented.		
X	7233	Packaging related description code	C	an..3
		Code specifying information related to packaging. Refer to D.99B Data Element Dictionary for acceptable code values.		

Segment: **FTX Free Text**
Position: 0460
Group: Segment Group 9 (Goods Item Details) Conditional (Optional)
Level: 2
Usage: Conditional (Optional)
Max Use: 9
Purpose: A segment to specify processable supplementary information relating to the goods item.
Comments:
Notes: Example Syntax

FTX+AAA+++PAPER?:PAPERBOARD/CARDBOARD'

Data Element Summary

<u>Attributes</u>	<u>Data Element</u>	<u>Component Element</u>	<u>Name</u>			
M	4451		TEXT SUBJECT CODE QUALIFIER	M	1	an..3
			Code specifying the subject of the text.			
			Provided values:			
		AAA	Goods description [7002] Plain language description of the nature of the goods sufficient to identify them at the level required for banking, Customs, statistical or transport purposes, avoiding unnecessary detail (Generic term).			
X	4453		TEXT FUNCTION, CODED	C	1	an..3
			Refer to D.99B Data Element Dictionary for acceptable code values.			
X	C107		TEXT REFERENCE	C	1	
			Coded reference to a standard text and its source.			
X		4441	Free text value code	M		an..17
			Code specifying free form text.			
X		1131	Code list identification code	C		an..3
			Identification of a code list. Refer to D.99B Data Element Dictionary for acceptable code values.			
X		3055	Code list responsible agency code	C		an..3
			Code specifying the agency responsible for a code list.			
		6	UN/ECE (United Nations - Economic Commission for Europe)			
	C108		TEXT LITERAL	C	1	
			Free text; one to five lines.			
M		4440	Free text value	M		an..512
			Free form text. Commodity description			
X		4440	Free text value	C		an..512
X		4440	Free text value	C		an..512
X		4440	Free text value	C		an..512
X		4440	Free text value	C		an..512
X	3453		LANGUAGE NAME CODE	C	1	an..3
X	4447		TEXT FORMATTING, CODED	C	1	an..3

Group: **MEA Segment Group 11: Measurements**
Position: 0520
Group: Segment Group 9 (Goods Item Details) Conditional (Optional)
Level: 2
Usage: Conditional (Optional)
Max Use: 99
Purpose: A group of segments to specify measurements applicable to a goods item.

Segment Summary

	<u>Pos.</u>	<u>Seg.</u>		<u>Req.</u>	<u>Max.</u>	<u>Group:</u>
	<u>No.</u>	<u>ID</u>	<u>Name</u>	<u>Des.</u>	<u>Use</u>	<u>Repeat</u>
M	0530	MEA	Measurements	M	1	

Segment:	MEA Measurements
Position:	0530 (Trigger Segment)
Group:	Segment Group 11 (Measurements) Conditional (Optional)
Level:	2
Usage:	Mandatory
Max Use:	1
Purpose:	A segment to specify measurements, other than dimensions, applicable to a goods item.
Comments:	
Notes:	Example Syntax
	MEA+AAE+G+KGM:27000'

Data Element Summary

<u>Attributes</u>	<u>Data Element</u>	<u>Component Element</u>	<u>Name</u>			
M	6311		MEASUREMENT ATTRIBUTE CODE	M	1	an..3
			Code specifying the measurement attribute.			
			Provided values:			
		AAE	Measurement			
			[6314] Value of the measured unit.			
	C502		MEASUREMENT DETAILS	C	1	
			Identification of measurement type.			
		6313	Measured attribute code	C		an..3
			Code specifying the attribute measured.			
			Provided values:			
		G	Gross weight			
			[6292] Weight (mass) of goods including packing but excluding the carrier's equipment.			
X		6321	Measurement significance, coded	C		an..3
			Refer to D.99B Data Element Dictionary for acceptable code values.			
X		6155	Non-discrete measurement name code	C		an..17
			Refer to D.99B Data Element Dictionary for acceptable code values.			
X		6154	Non-discrete measurement name	C		an..70
	C174		VALUE/RANGE	C	1	
			Measurement value and relevant minimum and maximum values of the measurement range.			
			fixed value = "KGM"			
			Weight Unit -> Related Equipment			
M		6411	Measurement unit code	M		an..3
			Code specifying the unit of measurement.			
			fixed value = "KGM"			
			Weight Unit -> Related Equipment			
			Provided values:			
		KGM	Kilograms			
		6314	Measurement value	C		an..18
			Value of the measured unit.			
			Total cargo weight			
X		6162	Range minimum	C		n..18
X		6152	Range maximum	C		n..18
X		6432	Significant digits	C		n..2
X	7383		SURFACE/LAYER CODE	C	1	an..3
			Refer to D.99B Data Element Dictionary for acceptable code values.			

Group: **DGS Segment Group 15: Dangerous Goods**
Position: 0640
Group: Segment Group 9 (Goods Item Details) Conditional (Optional)
Level: 2
Usage: Conditional (Optional)
Max Use: 99
Purpose: A group of segments to specify dangerous goods details related to the goods item. One goods item may be in different dangerous goods classes.

Segment Summary

	<u>Pos. No.</u>	<u>Seg. ID</u>	<u>Name</u>	<u>Req. Des.</u>	<u>Max. Use</u>	<u>Group: Repeat</u>
M	0650	DGS	Dangerous Goods	M	1	
	0660	FTX	Free Text	C	99	
	0670		Segment Group 16: Contact Information	C		9
	0700		Segment Group 17: Measurements	C		9

Segment: **DGS Dangerous Goods**
Position: 0650 (Trigger Segment)
Group: Segment Group 15 (Dangerous Goods) Conditional (Optional)
Level: 2
Usage: Mandatory
Max Use: 1
Purpose: A segment to indicate the class of dangerous goods, packing group, etc.
Comments:
Notes:

Example Syntax

DGS+IMD+8+2735+43.3:CEL+2'

Data Element Summary

<u>Attributes</u>	<u>Data Element</u>	<u>Component Element</u>	<u>Name</u>			
	8273		DANGEROUS GOODS REGULATIONS CODE	C	1	an..3
			Code specifying a dangerous goods regulation.			
			Provided values:			
		IMD	IMO IMDG code			
			Regulations regarding the transportation of dangerous goods on ocean-going vessels issued by the International Maritime Organization.			
	C205		HAZARD CODE	C	1	
			The identification of the dangerous goods in code.			
M		8351	Hazard code identification	M		an..7
			Dangerous goods code.			
X		8078	Hazard substance/item/page number	C		an..7
X		8092	Hazard code version number	C		an..10
	C234		UNDG INFORMATION	C	1	
			Information on dangerous goods, taken from the United Nations Dangerous Goods classification.			
		7124	UNDG number	C		n4
			Unique serial number assigned within the United Nations to substances and articles contained in a list of the dangerous goods most commonly carried.			
X		7088	Dangerous goods flashpoint	C		an..8
	C223		DANGEROUS GOODS SHIPMENT FLASHPOINT	C	1	
			Temperature at which a vapor can be ignited as per ISO 1523/73.			
		7106	Shipment flashpoint	C		n3
			Temperature in centigrade determined by the closed cup test as per ISO 1523/73 where a vapour is given off that can be ignited.			
			value always in celsius			
		6411	Measurement unit code	C		an..3
			Code specifying the unit of measurement.			
			Provided values:			
		CEL	Celsius			
	8339		PACKING GROUP, CODED	C	1	an..3
			Identification of a packing group by code.			
			Provided values:			
			Refer to D.99B Data Element Dictionary for acceptable code values.			
X	8364		EMS NUMBER	C	1	an..6
X	8410		MFAG	C	1	an..4
X	8126		TREM CARD NUMBER	C	1	an..10

X	C235	HAZARD IDENTIFICATION PLACARD DETAILS	C	1	
		These numbers appear on the hazard identification placard required on the means of transport.			
X	8158	Hazard identification number, upper part	C	an..4	
		The id. number for the Orange Placard (upper part) required on the means of transport.			
X	8186	Substance identification number, lower part	C	an4	
		The number for the Orange Placard (lower part) required on the means of transport.			
X	C236	DANGEROUS GOODS LABEL	C	1	
		Markings identifying the type of hazardous goods and similar information.			
X	8246	Dangerous goods label marking	C	an..4	
		Marking identifying the type of hazardous goods (substance), Loading/Unloading instructions and advising actions in case of emergency.			
X	8246	Dangerous goods label marking	C	an..4	
		Marking identifying the type of hazardous goods (substance), Loading/Unloading instructions and advising actions in case of emergency.			
X	8246	Dangerous goods label marking	C	an..4	
		Marking identifying the type of hazardous goods (substance), Loading/Unloading instructions and advising actions in case of emergency.			
X	8255	PACKING INSTRUCTION, CODED	C	1	an..3
X	8325	CATEGORY OF MEANS OF TRANSPORT, CODED	C	1	an..3
		Refer to D.99B Data Element Dictionary for acceptable code values.			
X	8211	PERMISSION FOR TRANSPORT, CODED	C	1	an..3

Segment: **FTX Free Text**
Position: 0660
Group: Segment Group 15 (Dangerous Goods) Conditional (Optional)
Level: 3
Usage: Conditional (Optional)
Max Use: 99
Purpose: A segment to specify the dangerous goods technical name and to specify any additional dangerous goods information.

Comments:

Notes: Example Syntax

FTX+AAA+++PAPER?:PAPERBOARD/CARDBOARD'

Data Element Summary

<u>Attributes</u>	<u>Data Element</u>	<u>Component Element</u>	<u>Name</u>		
M	4451		TEXT SUBJECT CODE QUALIFIER	M	1 an..3
			Code specifying the subject of the text.		
			Provided values:		
		AAA	Goods description [7002] Plain language description of the nature of the goods sufficient to identify them at the level required for banking, Customs, statistical or transport purposes, avoiding unnecessary detail (Generic term).		
		AAC	Dangerous goods additional information Additional information concerning dangerous goods.		
		AAD	Dangerous goods, technical name Proper shipping name, supplemented as necessary with the correct technical name, by which a dangerous substance or article may be correctly identified or which is sufficiently informative to permit identification by reference to generally available literature.		
		AEP	Radioactive goods, additional information Additional information related to radioactive goods.		
		HAN	Handling instructions [4078] Instructions on how specified goods, packages or containers should be handled.		
		PKG	Packaging information Note contains packaging information.		
X	4453		TEXT FUNCTION, CODED	C	1 an..3
			Refer to D.99B Data Element Dictionary for acceptable code values.		
	C107		TEXT REFERENCE	C	1
			Coded reference to a standard text and its source.		
M		4441	Free text value code	M	an..17
			Code specifying free form text.		
			MATERIAL STATES: - "GAS" - "LQD" - "SLD"		
			MARINE POLLUTANT: - "NP"		

		- "P"		
		PROPER SHIPPING NAME -> "PSN"		
		LIMITED QUANTITY -> "TLQ"		
		TECHNICAL NAME -> "TN"		
		PACKAGE TYPE -> "PACKAGE_TYPE "		
		EMPTY UNCLEANED -> "4"		
	1131	Code list identification code	C	an..3
		Identification of a code list.		
		Provided values:		
		122 Commodity		
		(7357) Code identifying types of goods for Customs, transport or statistical purposes (generic term).		
		183 Dangerous goods packing type		
		Identification of package types for the description related to dangerous goods.		
	3055	Code list responsible agency code	C	an..3
		Code specifying the agency responsible for a code list.		
		Provided values:		
		ZZZ Mutually defined		
	C108	TEXT LITERAL	C	1
		Free text; one to five lines.		
M	4440	Free text value	M	an..512
		Free form text.		
X	4440	Free text value	C	an..512
X	4440	Free text value	C	an..512
X	4440	Free text value	C	an..512
X	4440	Free text value	C	an..512
X	3453	LANGUAGE NAME CODE	C	1 an..3
X	4447	TEXT FORMATTING, CODED	C	1 an..3
		Refer to D.99B Data Element Dictionary for acceptable code values.		

Group: **CTA Segment Group 16: Contact Information**
Position: 0670
Group: Segment Group 15 (Dangerous Goods) Conditional (Optional)
Level: 3
Usage: Conditional (Optional)
Max Use: 9
Purpose: A group of segments to identify a contact to whom communication regarding the dangerous goods can be directed.

Segment Summary

	<u>Pos. No.</u>	<u>Seg. ID</u>	<u>Name</u>	<u>Req. Des.</u>	<u>Max. Use</u>	<u>Group: Repeat</u>
M	0680	CTA	Contact Information	M	1	
	0690	COM	Communication Contact	C	9	

Segment: **CTA Contact Information**
Position: 0680 (Trigger Segment)
Group: Segment Group 16 (Contact Information) Conditional (Optional)
Level: 3
Usage: Mandatory
Max Use: 1
Purpose: A segment to identify a person or department.
Comments:
Notes:

Example Syntax

CTA+HE+:N/A

Data Element Summary

	<u>Data Element</u>	<u>Component Element</u>	<u>Name</u>		
	3139		CONTACT FUNCTION CODE	C	1 an..3
			Code specifying the function of a contact (e.g. department or person).		
			Provided values:		
		HE	Emergency dangerous goods contact		
			Party who is to be contacted to intervene in case of emergency.		
	C056		DEPARTMENT OR EMPLOYEE DETAILS	C	1
			Code and/or name of a department or employee. Code preferred.		
X		3413	Department or employee identification	C	an..17
		3412	Department or employee	C	an..35
			The department or person within an organizational entity.		

Segment: **COM Communication Contact**
Position: 0690
Group: Segment Group 16 (Contact Information) Conditional (Optional)
Level: 4
Usage: Conditional (Optional)
Max Use: 9
Purpose: A segment to identify a communication number of a person or department.

Comments:

Notes: Example Syntax

COM+N/A:TE'

Data Element Summary

<u>Attributes</u>	<u>Data Element</u>	<u>Component Element</u>	<u>Name</u>		
M	C076		COMMUNICATION CONTACT	M	3
			Communication number of a department or employee in a specified channel.		
M		3148	Communication number	M	an..512
			The communication number.		
M		3155	Communication number code qualifier	M	an..3
			Code qualifying the communication number.		
			Provided values:		
			TE Telephone		
			Voice/data transmission by telephone.		

Group: **MEA Segment Group 17: Measurements**
Position: 0700
Group: Segment Group 15 (Dangerous Goods) Conditional (Optional)
Level: 3
Usage: Conditional (Optional)
Max Use: 9
Purpose: A group of segments to identify dangerous goods measurements.

Segment Summary

	<u>Pos.</u>	<u>Seg.</u>		<u>Req.</u>	<u>Max.</u>	<u>Group:</u>
	<u>No.</u>	<u>ID</u>	<u>Name</u>	<u>Des.</u>	<u>Use</u>	<u>Repeat</u>
M	0710	MEA	Measurements	M	1	

Segment: **MEA Measurements**
Position: 0710 (Trigger Segment)
Group: Segment Group 17 (Measurements) Conditional (Optional)
Level: 3
Usage: Mandatory
Max Use: 1
Purpose: A segment to specify measurements of the dangerous goods.
Comments:
Notes:

Example Syntax

MEA+AAE+AAF+KGM:27000'
 MEA+AAE+AAX+LTR:180.5'

Data Element Summary

<u>Attributes</u>	<u>Data Element</u>	<u>Component Element</u>	<u>Name</u>			
M	6311		MEASUREMENT ATTRIBUTE CODE	M	1	an..3
			Code specifying the measurement attribute.			
			Provided values:			
		AAE	Measurement			
			[6314] Value of the measured unit.			
	C502		MEASUREMENT DETAILS	C	1	
			Identification of measurement type.			
		6313	Measured attribute code	C		an..3
			Code specifying the attribute measured.			
			Provided values:			
		AAF	Net net weight			
			[6048] Weight (mass) of the goods themselves without any packing.			
		AAX	Net volume			
			The observed volume after adjustment for factors such as temperature or gravity.			
		AEO	Radioactivity			
			Activity of radioactive material.			
X		6321	Measurement significance, coded	C		an..3
			Refer to D.99B Data Element Dictionary for acceptable code values.			
X		6155	Non-discrete measurement name code	C		an..17
			Refer to D.99B Data Element Dictionary for acceptable code values.			
X		6154	Non-discrete measurement name	C		an..70
	C174		VALUE/RANGE	C	1	
			Measurement value and relevant minimum and maximum values of the measurement range.			
M		6411	Measurement unit code	M		an..3
			Code specifying the unit of measurement.			
			Provided values:			
		KGM	Kilograms			
		LBR	Pounds			
		LTR	Liters			
		MBQ	Mega Becquerels			
		6314	Measurement value	C		an..18
			Value of the measured unit.			
X		6162	Range minimum	C		n..18
X		6152	Range maximum	C		n..18

X		6432	Significant digits	C	n..2
X	7383		SURFACE/LAYER CODE	C	1 an..3

Refer to D.99B Data Element Dictionary for acceptable code values.

Group: **EQD Segment Group 18: Equipment Details**
Position: 0730
Group:
Level: 1
Usage: Conditional (Optional)
Max Use: 999
Purpose: A group of segments to specify equipment in which goods are transported.

Segment Summary

	<u>Pos. No.</u>	<u>Seg. ID</u>	<u>Name</u>	<u>Req. Des.</u>	<u>Max. Use</u>	<u>Group: Repeat</u>
M	0740	EQD	Equipment Details	M	1	
	0750	EQN	Number of Units	C	1	
	0760	TMD	Transport Movement Details	C	1	
	0770	MEA	Measurements	C	9	
	0780	DIM	Dimensions	C	9	
	0790	HAN	Handling Instructions	C	1	
	0800	TMP	Temperature	C	1	
	0820	FTX	Free Text	C	9	
	0840		Segment Group 19: Name and Address	C		9

Segment: **EQD Equipment Details**
Position: 0740 (Trigger Segment)
Group: Segment Group 18 (Equipment Details) Conditional (Optional)
Level: 1
Usage: Mandatory
Max Use: 1
Purpose: A segment to specify equipment, and equipment size and type used in the transport.
Comments:
Notes: Example Syntax

EQD+CN++45G0:102:5'

Data Element Summary

<u>Attributes</u>	<u>Data Element</u>	<u>Component Element</u>	<u>Name</u>			
M	8053		EQUIPMENT TYPE CODE QUALIFIER	M	1	an..3
			Code qualifying a type of equipment.			
			Provided values:			
		CN	Container			
			Equipment item as defined by ISO for transport. It must be of: A) permanent character, strong enough for repeated use; B) designed to facilitate the carriage of goods, by one or more modes of transport, without intermediate reloading; C) fitted with devices for its ready handling, particularly.			
X	C237		EQUIPMENT IDENTIFICATION	C	1	
			Marks (letters/numbers) identifying equipment.			
X		8260	Equipment identification number	C		an..17
			Marks (letters and/or numbers) which identify equipment e.g. unit load device.			
X		1131	Code list identification code	C		an..3
			Identification of a code list.			
			Refer to D.99B Data Element Dictionary for acceptable code values.			
X		3055	Code list responsible agency code	C		an..3
			Code specifying the agency responsible for a code list.			
			Refer to D.99B Data Element Dictionary for acceptable code values.			
X		3207	Country name code	C		an..3
			Identification of the name of the country or other geographical entity as specified in ISO 3166.			
	C224		EQUIPMENT SIZE AND TYPE	C	1	
			Code and or name identifying size and type of equipment. Code preferred.			
		8155	Equipment size and type description code	C		an..10
			Code specifying the size and type of equipment.			
		1131	Code list identification code	C		an..3
			Identification of a code list.			
			Provided values:			
		102	Size and type			
		3055	Code list responsible agency code	C		an..3
			Code specifying the agency responsible for a code list.			
			Provided values:			
			Refer to D.99B Data Element Dictionary for acceptable code values.			
X		8154	Equipment size and type description	C		an..35

X	8077	EQUIPMENT SUPPLIER, CODED	C	1 an..3
		Refer to D.99B Data Element Dictionary for acceptable code values.		
X	8249	EQUIPMENT STATUS CODE	C	1 an..3
		Refer to D.99B Data Element Dictionary for acceptable code values.		
X	8169	FULL/EMPTY INDICATOR, CODED	C	1 an..3
		Refer to D.99B Data Element Dictionary for acceptable code values.		

Segment: EQN **Number of Units**
Position: 0750
Group: Segment Group 18 (Equipment Details) Conditional (Optional)
Level: 2
Usage: Conditional (Optional)
Max Use: 1
Purpose: A segment to specify number of pieces of equipment required.
Comments:
Notes: Example Syntax
 EQN+1:2'

Data Element Summary

<u>Attributes</u>	<u>Data Element</u>	<u>Component Element</u>	<u>Name</u>		
M	C523		NUMBER OF UNIT DETAILS Identification of number of units and its purpose.	M	1
		6350	Number of units Number of units of a certain type.	C	n..15
		6353	Unit type code qualifier Code qualifying the type of unit.	C	an..3
Provided values:					
Refer to D.99B Data Element Dictionary for acceptable code values.					

Segment: **TMD Transport Movement Details**
Position: 0760
Group: Segment Group 18 (Equipment Details) Conditional (Optional)
Level: 2
Usage: Conditional (Optional)
Max Use: 1
Purpose: A segment to specify transport movement details for the equipment.
Comments:
Notes: Example Syntax
 TMD+3++MM'

Data Element Summary

	<u>Data Element</u>	<u>Component Element</u>	<u>Name</u>		
	C219		MOVEMENT TYPE	C	1
			Description of type of service for movement of cargo.		
		8335	Movement type description code	C	an..3
			Code specifying a type of movement.		
			Provided values:		
			3 FCL/FCL		
			Defines the movement of cargo packed by the shipper or shipper's agent and unpacked by the consignee or consignee's agent. 'FCL' means Full Container Load.		
X		8334	Movement type description	C	an..35
X	8332		EQUIPMENT PLAN	C	1 an..26
	8341		HAULAGE ARRANGEMENTS, CODED	C	1 an..3
			Specification of the type of equipment haulage arrangements.		
			Provided values:		
			Refer to D.99B Data Element Dictionary for acceptable code values.		

Segment: **MEA Measurements**
Position: 0770
Group: Segment Group 18 (Equipment Details) Conditional (Optional)
Level: 2
Usage: Conditional (Optional)
Max Use: 9
Purpose: A segment to specify measurements, other than dimensions, associated with the equipment, such as weight.
Comments:
Notes: Example Syntax

MEA+AAE+AAL+KGM:27000'

Data Element Summary

<u>Attributes</u>	<u>Data Element</u>	<u>Component Element</u>	<u>Name</u>			
M	6311		MEASUREMENT ATTRIBUTE CODE	M	1	an..3
			Code specifying the measurement attribute.			
			Provided values:			
		AAE	Measurement			
			[6314] Value of the measured unit.			
	C502		MEASUREMENT DETAILS	C	1	
			Identification of measurement type.			
		6313	Measured attribute code	C		an..3
			Code specifying the attribute measured.			
			Provided values:			
		AAL	Net weight			
			[6160] Weight (mass) of goods including any packing normally going with them to a buyer in a retail sale.			
		AAO	Humidity			
		AAS	Air flow			
		ZC	Carbon			
		ZO	Oxygen			
X		6321	Measurement significance, coded	C		an..3
			Refer to D.99B Data Element Dictionary for acceptable code values.			
X		6155	Non-discrete measurement name code	C		an..17
			Refer to D.99B Data Element Dictionary for acceptable code values.			
X		6154	Non-discrete measurement name	C		an..70
	C174		VALUE/RANGE	C	1	
			Measurement value and relevant minimum and maximum values of the measurement range.			
M		6411	Measurement unit code	M		an..3
			Code specifying the unit of measurement.			
			Provided values:			
		CBM	Cubic meters per hour			
		HMD	Percentage of Moisture			
		KGM	Kilograms			
		PCT	Percentage			
		6314	Measurement value	C		an..18
			Value of the measured unit.			
X		6162	Range minimum	C		n..18
X		6152	Range maximum	C		n..18

X		6432	Significant digits	C	n..2
X	7383		SURFACE/LAYER CODE	C	1 an..3

Refer to D.99B Data Element Dictionary for acceptable code values.

Segment: **DIM Dimensions**
Position: 0780
Group: Segment Group 18 (Equipment Details) Conditional (Optional)
Level: 2
Usage: Conditional (Optional)
Max Use: 9
Purpose: A segment to specify dimensions applicable to equipment.
Comments:
Notes:

Example Syntax

DIM+9+MTR:36.5:3.65:5.48'

Data Element Summary

<u>Attributes</u>	<u>Data Element</u>	<u>Component Element</u>	<u>Name</u>		
M	6145		DIMENSION QUALIFIER	M	1 an..3
			To specify the dimensions applicable to each of the transportable units.		
			Provided values:		
			9 Off-standard dimension general		
			The dimensions that the cargo exceeds the standard dimensions.		
M	C211		DIMENSIONS	M	1
			Specification of the dimensions of a transportable unit.		
M		6411	Measurement unit code	M	an..3
			Code specifying the unit of measurement.		
			Provided values:		
			FET Feet		
			MTR Meter		
		6168	Length dimension	C	n..15
			Length of pieces or packages stated for transport purposes.		
		6140	Width dimension	C	n..15
			Width of pieces or packages stated for transport purposes.		
		6008	Height dimension	C	n..15
			Height of pieces or packages stated for transport purposes.		

Segment: **HAN Handling Instructions**
Position: 0790
Group: Segment Group 18 (Equipment Details) Conditional (Optional)
Level: 2
Usage: Conditional (Optional)
Max Use: 1
Purpose: A segment to specify handling instructions for specified equipment.
Comments:
Notes:

Example Syntax

HAN+NAR'

Data Element Summary

<u>Attributes</u>	<u>Data Element</u>	<u>Component Element</u>	<u>Name</u>		
	C524		HANDLING INSTRUCTIONS	C	1
			Instruction for the handling of goods, products or articles in shipment, storage etc.		
		4079	Handling instructions, coded	C	an..3
			Identification of the instructions on how specified goods, packages or containers should be handled.		
			Provided values:		
			NAR Non active reefer		
X		1131	Code list identification code	C	an..3
			Refer to D.99B Data Element Dictionary for acceptable code values.		
X		3055	Code list responsible agency code	C	an..3
			Refer to D.99B Data Element Dictionary for acceptable code values.		
X		4078	Handling instructions	C	an..70
X	C218		HAZARDOUS MATERIAL	C	1
			To specify a hazardous material.		
X		7419	Hazardous material class code, identification	C	an..4
X		1131	Code list identification code	C	an..3
			Refer to D.99B Data Element Dictionary for acceptable code values.		
X		3055	Code list responsible agency code	C	an..3
			Refer to D.99B Data Element Dictionary for acceptable code values.		
X		7418	Hazardous material class	C	an..35

Segment: **TMP** Temperature
Position: 0800
Group: Segment Group 18 (Equipment Details) Conditional (Optional)
Level: 2
Usage: Conditional (Optional)
Max Use: 1
Purpose: A segment to specify a temperature setting for the equipment.
Comments:
Notes: Example syntax
 TMP+2+31:CEL'

Data Element Summary

<u>Attributes</u>	<u>Data Element</u>	<u>Component Element</u>	<u>Name</u>			
M	6245		TEMPERATURE QUALIFIER	M	1	an..3
			A code giving specific meaning to the temperature.			
			Provided values:			
		2	Transport temperature			
			The temperature at which cargo is to be kept while it is under transport.			
	C239		TEMPERATURE SETTING	C	1	
			The temperature under which the goods are (to be) stored or shipped.			
	6246		Temperature setting	C	n3	
			The actual temperature value in degrees Celsius (e.g. 008, 020).			
	6411		Measurement unit code	C	an..3	
			Code specifying the unit of measurement.			
			Provided values:			
		CEL	Celsius			
		FAH	Fahrenheit			

Segment: **FTX Free Text**
Position: 0820
Group: Segment Group 18 (Equipment Details) Conditional (Optional)
Level: 2
Usage: Conditional (Optional)
Max Use: 9
Purpose: A segment to specify processable supplementary information associated with the equipment.
Comments:
Notes: Example syntax
 FTX+HAN++SBD:130:ZZZ'

Data Element Summary

<u>Attributes</u>	<u>Data Element</u>	<u>Component Element</u>	<u>Name</u>			
M	4451		TEXT SUBJECT CODE QUALIFIER	M	1	an..3
			Code specifying the subject of the text.			
			Provided values:			
		AEB	Temperature control instructions			
			Instruction regarding the temperature control of the cargo.			
		AGK	Equipment			
			Description of equipment.			
		HAN	Handling instructions			
			[4078] Instructions on how specified goods, packages or containers should be handled.			
X	4453		TEXT FUNCTION, CODED	C	1	an..3
			Refer to D.99B Data Element Dictionary for acceptable code values.			
	C107		TEXT REFERENCE	C	1	
			Coded reference to a standard text and its source.			
M		4441	Free text value code	M		an..17
			Code specifying free form text.			
			Provided values:			
		FRZ	Super Freeze Service			
		GEN	Genset Required			
		HUM	Humidify			
		NTP	Number of temperature probes requested			
		SAD	Store above deck			
		SBD	Store below deck			
		TVA	Temperature variance			
		VTC	Vent closed			
		VTO	Vent open			
		1131	Code list identification code	C		an..3
			Identification of a code list.			
			Provided values:			
		130	Special handling			
			Code to indicate that the nature of the consignment may necessitate use of special handling procedures (IATA).			
		3055	Code list responsible agency code	C		an..3
			Code specifying the agency responsible for a code list.			
			Provided values:			

		ZZZ	Mutually defined		
	C108		TEXT LITERAL	C	1
			Free text; one to five lines.		
M		4440	Free text value	M	an..512
			Free form text.		
X		4440	Free text value	C	an..512
X		4440	Free text value	C	an..512
X		4440	Free text value	C	an..512
X		4440	Free text value	C	an..512
X	3453		LANGUAGE NAME CODE	C	1 an..3
X	4447		TEXT FORMATTING, CODED	C	1 an..3

Refer to D.99B Data Element Dictionary for acceptable code values.

Group: **NAD Segment Group 19: Name and Address**
Position: 0840
Group: Segment Group 18 (Equipment Details) Conditional (Optional)
Level: 2
Usage: Conditional (Optional)
Max Use: 9
Purpose: A group of segments to identify different equipment pick-up or drop-off places.

Segment Summary

	<u>Pos. No.</u>	<u>Seg. ID</u>	<u>Name</u>	<u>Req. Des.</u>	<u>Max. Use</u>	<u>Group: Repeat</u>
M	0850	NAD	Name and Address	M	1	
	0860	DTM	Date/Time/Period	C	1	

Segment: **NAD Name and Address**
Position: 0850 (Trigger Segment)
Group: Segment Group 19 (Name and Address) Conditional (Optional)
Level: 2
Usage: Mandatory
Max Use: 1
Purpose: A segment to specify a pick-up or drop-off address.
Comments:
Notes:

```
Example Syntax
NAD+TR++ANTWERP HESSENAT 869++QUAY 869'
```

Data Element Summary

<u>Attributes</u>	<u>Data Element</u>	<u>Component Element</u>	<u>Name</u>		
M	3035		PARTY FUNCTION CODE QUALIFIER	M	1 an..3
			Code giving specific meaning to a party.		
			Provided values:		
		CK	Empty equipment despatch party Party from whose premises empty equipment will be or has been despatched. MTY Container pick up location		
		CL	Container location party Party from whose premises container will be or has been despatched. Ship from (Door location)		
		SF	Ship from Identification of the party from where goods will be or have been shipped. Ship from (Door location)		
		TR	Terminal operator A party which handles the loading and unloading of marine vessels. Full container drop off location.		
X	C082		PARTY IDENTIFICATION DETAILS	C	1
			Identification of a transaction party by code.		
X		3039	Party identifier	M	an..35
			Code specifying the identity of a party.		
X		1131	Code list identification code	C	an..3
			Identification of a code list. Refer to D.99B Data Element Dictionary for acceptable code values.		
X		3055	Code list responsible agency code	C	an..3
			Code specifying the agency responsible for a code list. Refer to D.99B Data Element Dictionary for acceptable code values.		
	C058		NAME AND ADDRESS	C	1
			Unstructured name and address: one to five lines.		
M		3124	Name and address line	M	an..35
			Free form name and address description. Partner name		
		3124	Name and address line	C	an..35
			Free form name and address description. Partner address		
		3124	Name and address line	C	an..35

		Free form name and address description.		
		Partner address (continued)		
X		3124	Name and address line	C an..35
X		3124	Name and address line	C an..35
X	C080		PARTY NAME	C 1
			Identification of a transaction party by name, one to five lines. Party name may be formatted.	
X		3036	Party name	M an..35
			Name of a party involved in a transaction.	
X		3036	Party name	C an..35
			Name of a party involved in a transaction.	
X		3036	Party name	C an..35
			Name of a party involved in a transaction.	
X		3036	Party name	C an..35
			Name of a party involved in a transaction.	
X		3045	Party name format code	C an..3
			Code specifying the representation of a party name.	
			Refer to D.99B Data Element Dictionary for acceptable code values.	
	C059		STREET	C 1
			Street address and/or PO Box number in a structured address: one to four lines.	
M		3042	Street and number/p.o. box	M an..35
			Street and number in plain language, or Post Office Box No.	
		3042	Street and number/p.o. box	C an..35
			Street and number in plain language, or Post Office Box No.	
X		3042	Street and number/p.o. box	C an..35
X		3042	Street and number/p.o. box	C an..35
X	3164		CITY NAME	C 1 an..35
X	C819		COUNTRY SUB-ENTITY DETAILS	C 1
			To specify a part of a country (eg county or part of a city).	
X		3229	Country sub-entity name code	C an..9
			Identification of the name of sub-entities (state, province) defined by appropriate governmental agencies.	
X		1131	Code list identification code	C an..3
			Identification of a code list.	
			Refer to D.99B Data Element Dictionary for acceptable code values.	
X		3055	Code list responsible agency code	C an..3
			Code specifying the agency responsible for a code list.	
			Refer to D.99B Data Element Dictionary for acceptable code values.	
X		3228	Country sub-entity name	C an..35
			Name of sub-entities (state, province) defined by appropriate governmental agencies.	
		3251	POSTAL IDENTIFICATION CODE	C 1 an..17
			Code specifying the postal zone or address.	
		3207	COUNTRY NAME CODE	C 1 an..3
			Identification of the name of the country or other geographical entity as specified in ISO 3166.	

Segment: **DTM** Date/Time/Period
Position: 0860
Group: Segment Group 19 (Name and Address) Conditional (Optional)
Level: 3
Usage: Conditional (Optional)
Max Use: 1
Purpose: A segment to indicate date and time relating to pick-up or drop-off.

Comments:

Notes: Example Syntax

DTM+395:201707182100:203'

Data Element Summary

<u>Attributes</u>	<u>Data Element</u>	<u>Component Element</u>	<u>Name</u>		
M	C507		DATE/TIME/PERIOD	M	1
			Date and/or time, or period relevant to the specified date/time/period type.		
M		2005	Date/time/period function code qualifier	M	an..3
			Code giving specific meaning to a date, time or period.		
			Provided values:		
		395	Equipment positioning date/time, estimated Date/time on which equipment is estimated to be positioned (delivered).		
		2380	Date/time/period value	C	an..35
			The value of a date, a date and time, a time or of a period in a specified representation.		
		2379	Date/time/period format code	C	an..3
			Code specifying the representation of a date, time or period.		
			Provided values:		
		203	CCYYMMDDHHMM Calendar date including time with minutes: C=Century; Y=Year; M=Month; D=Day; H=Hour; M=Minutes.		

Segment: **UNT Message Trailer**

Position: 0930

Group:

Level: 0

Usage: Mandatory

Max Use: 1

Purpose: A service segment ending a message, giving the total number of segments in the message (including the UNH & UNT) and the control reference number of the message.

Comments:

Notes: Example Syntax

UNT+45+2525'

Data Element Summary

<u>Attributes</u>	<u>Data Element</u>	<u>Component Element</u>	<u>Name</u>			
M	0074		NUMBER OF SEGMENTS IN A MESSAGE	M	1	n..6
			Control count of number of segments in a message.			
M	0062		MESSAGE REFERENCE NUMBER	M	1	an..14
			Unique message reference assigned by the sender.			

Segment: UNZ Interchange Trailer
Position: 0003
Group:
Level: 0
Usage: Mandatory
Max Use: 1
Purpose: To end and check the completeness of an interchange
Comments:
Notes:

Example Syntax

UNZ+1+2517'

Data Element Summary

<u>Attributes</u>	<u>Data Element</u>	<u>Component Element</u>	<u>Name</u>			
M	0036		INTERCHANGE CONTROL COUNT	M	1	n..6
			Count either of the number of messages or, if used, of the number of functional groups in an interchange.			
M	0020		INTERCHANGE CONTROL REFERENCE	M	1	an..14
			Unique reference assigned by the sender to an interchange.			

4 Appendix

4.1 Example Messages

4.1.1 Example Message "Booking >Confirmation"

A Booking Confirmation (AP = Accepted) of type IFTMBC. Petra Jacobs from Hamburg Süd confirms to company Fr. Meyer's Sohn (FMS) on 7/10/17 that a reservation was successful.

UNB+UNOC:3+SUDU+FMS+170710:1619+2517
 UNH+2525+IFTMBC:D:99B:UN
 BGM+770+174638957+6+AP
 CTA+CW+:PETRA JACOBS
 COM+?+32-3 205 63 33:TE
 COM+?+32-3 232 73 58:FX
 COM+anr-booking@hamburgsud.com:EM
 DTM+137:201707101618:203
 TSR+30
 FTX+AAI+++EX SWANA
 RFF+CT:LBEC700023
 RFF+FF:4110347070030
 RFF+BN:7ANRNT1070
 RFF+BM:SUDUC7ANRNT1070X
 TDT+20+728S+1+8:MAIN CARRIAGE+SUDU:172:182+++9406647::11:CMA CGM
 RACINE:MT
 LOC+9+BEANR:139:6:ANTWERP BE
 DTM+133:20170720:102
 DTM+180:201707181800:203
 LOC+11+TRKMX:139:6:ISTANBUL/KUMPORT TR
 DTM+132:20170731:102
 NAD+CA+SUDU:160:87+HAMBURG SUED
 NAD+CZ++FR. MEYER?
 S SOHN GMBH & CO.++NOORDERPLAATS 5+++2000+BE
 CTA+IC+:RUBEN VAN DE MOORTELE
 COM+?+32 3 203 59 11:TE
 COM+?+32 3 203 59 45:FX
 COM+RUBEN.VANDEMOORTELE@FMS-LOGISTICS.COM:EM
 NAD+FW++FR. MEYER?
 S SOHN GMBH & CO.++NOORDERPLAATS 5+++2000+BE
 CTA+IC+:RUBEN VAN DE MOORTELE
 COM+?+32 3 203 59 11:TE
 COM+?+32 3 203 59 45:FX
 COM+RUBEN.VANDEMOORTELE@FMS-LOGISTICS.COM:EM
 NAD+FC++FR. MEYER?'S SOHN GMBH & CO.
 CTA+IC+:N/A
 COM+-:TE
 GID+1+1:PK:67:6:PACKAGE
 FTX+AAA+++PAPER?:PAPERBOARD/CARDBOARD
 MEA+AAE+G+KGM:27000

EQD+CN++45G0:102:5
EQN+1:2
TMD+3++MM
MEA+AAE+AAL+KGM:27000
NAD+CK++ANTWERP VAN DOORN++MUISBROEKLAAN 34A
DTM+392:201707050800:203
NAD+TR++ANTWERP HESSENAT 869++QUAY 869
DTM+180:201707182100:203
UNT+45+2525
UNZ+1+2517

4.2 Example Message "Booking Confirmation"

A response message from Hamburg Süd (SUDU) to Fr. Meyer's Sohn. The booking request is confirmed ("AP"). The equipment is carried from Pier-to-pier (code "30"). It is hazardous cargo (code "11") and an environmental pollutant (code "15"). Booked to Vessel voyage 729S. Port of Loading is Rotterdam, departure time is 7/20/17 18:22, port of discharge is Rio, 8/9/17. Carrier is Hamburg Süd, consignee is Fr. Meyer's Sohn.

UNB+UNOC:3+SUDU+FMS+170711:1300+2538
 UNH+2546+IFTMBC:D:99B:UN
 BGM+770+174662531+6+AP
 CTA+CW+:TINA ARAGHI
 COM+-49-40-37050:TE
 COM+-49-40-37052560:FX
 COM+tina.araghi@hamburgsud.com:EM
 DTM+137:201707111258:203
 TSR+30
 FTX+AAI+++BUCHUNG VORBEHATLICH IMO AKZEPT DES REEDERS !
 GDS+11
 GDS+15
 RFF+CT:REUR600505
 RFF+FF:5116027070020
 RFF+SI:5116027070020
 RFF+BN:7HAMSA2192
 TDT+20+729S+1+8:MAIN CARRIAGE+SUDU:172:182+++9214202::11:E.R.
 LONDON:LR
 LOC+9+NLRTM:139:6:ROTTERDAM NL
 DTM+133:20170720:102
 DTM+180:201707182200:203
 LOC+11+BRRIO:139:6:RIO DE JANEIRO BR
 DTM+132:20170809:102
 NAD+CA+SUDU:160:87+HAMBURG SUED
 NAD+CZ++FR. MEYER?
 S SOHN (GMBH & CO.) KG++GRUENER DEICH 19+++20097+DE
 CTA+IC+:ESMAHAN AKYOL
 COM+?+49 40 2393 1244:TE
 COM+?+49 40 2393 2049:FX
 COM+ESMAHAN.AKYOL@FMS-LOGISTICS.COM:EM
 NAD+FW++FR. MEYER?'S SOHN (GMBH & CO.) KG++GRUENER DEICH
 19+++20097+DE
 CTA+IC+:ESMAHAN AKYOL
 COM+?+49 40 2393 1244:TE
 COM+?+49 40 2393 2049:FX
 COM+ESMAHAN.AKYOL@FMS-LOGISTICS.COM:EM
 NAD+FC++FR. MEYER?'S SOHN (GMBH & CO.) KG
 CTA+IC+:N/A
 COM+-:TE
 GID+1+1:PK:67:6:PACKAGE
 FTX+AAA+++CHEMICALS?:(NOS)

MEA+AAE+G+KGM:55400
DGS+IMD+8+2735++2
FTX+AAD++PSN:122:ZZZ+AMINES, LIQUID, CORROSIVE, N.O.S.
FTX+AAD++TN:122:ZZZ+1-tetradecylamine, n,n-dimethyl, IMDG-CODE
SEGREGATION GROUP - N1 8 ALKALIS
FTX+AAC++LQD:122:ZZZ
FTX+AAC++P:122:ZZZ
FTX+PKG++31H:183:ZZZ
CTA+HE+:N/A
COM+N/A:TE
MEA+AAE+AAF+KGM:14400
EQD+CN++22GP:102:5
EQN+2:2
TMD+3++MM
MEA+AAE+AAL+KGM:55400
NAD+CK++KRAMER GROUP++MISSOURIWEG 17
DTM+392:201707060800:203
NAD+TR++ECT DELTA DDN++EUROPAWEG 875:MAASVLAKTE
DTM+180:201707181000:203
UNT+56+2546
UNZ+1+2538