



EDIFACT Version D Release 99B

**IFTMBF
Firm Booking Message From Customer To
Hamburg Süd**

Message Implementation Guide

Version 1.0.1



Change history

Version	Date	Comments
1.0.0	30-Nov-2016	Initial version
1.0.1	21.02.2020	Monteiro/Schifkowski/Riesterer

Contact our eCommerce team :

Email: ecommerce@hamburgsud.com

Hamburg Süd
Customer Order Management
Willy-Brandt-Str. 59-61
20457 Hamburg
Germany

IFTMBF Firm Booking Message

Introduction:

A message from a party definitely booking forwarding and/or transport services for a consignment to the party providing those services. The message will contain the conditions under which the sender of the messages requires the services to take place.

	<u>Pos. No.</u>	<u>Seg. ID</u>	<u>Name</u>	<u>Req. Des.</u>	<u>Max.Use</u>	<u>Group Repeat</u>	<u>Notes and Comments</u>
M	0010	UNB	Interchange Header	M	1		
M	0020	UNH	Message Header	M	1		
M	0030	BGM	Beginning of Message	M	1		
	0040	CTA	Contact Information	C	1		
	0050	COM	Communication Contact	C	9		
	0060	DTM	Date/Time/Period	C	9		
	0070	TSR	Transport Service Requirements	C	9		
X	0080	MOA	Monetary Amount	C	9		
	0090	FTX	Free Text	C	99		
X	0100	CNT	Control Total	C	9		
X	0110	GDS	Nature of Cargo	C	9		
	0120		Segment Group 1: LOC-DTM	C		99	
M	0130	LOC	Place/Location Identification	M	1		
X	0140	DTM	Date/Time/Period	C	9		
	0150		Segment Group 2: TOD-LOC	C		2	
X	0160	TOD	Terms of Delivery or Transport	M	1		
X	0170	LOC	Place/Location Identification	C	9		
	0180		Segment Group 3: RFF-DTM	C		99	
M	0190	RFF	Reference	M	1		
X	0200	DTM	Date/Time/Period	C	9		
	0210		Segment Group 4: GOR-FTX-SG5	C		9	
X	0220	GOR	Governmental Requirements	M	1		
X	0230	FTX	Free Text	C	9		
	0240		Segment Group 5: DOC-DTM	C		9	
X	0250	DOC	Document/Message Details	M	1		
X	0260	DTM	Date/Time/Period	C	1		
	0270		Segment Group 6: TCC-LOC-FTX-CUX-PRI-EQN-PCD-MOA-QTY	C		99	
X	0280	TCC	Transport Charge/Rate Calculations	M	1		
X	0290	LOC	Place/Location Identification	C	1		
X	0300	FTX	Free Text	C	1		
X	0310	CUX	Currencies	C	1		
X	0320	PRI	Price Details	C	1		
X	0330	EQN	Number of Units	C	1		
X	0340	PCD	Percentage Details	C	1		
X	0350	MOA	Monetary Amount	C	9		
X	0360	QTY	Quantity	C	9		
	0370		Segment Group 7: TDT-DTM-TSR-SG8-SG9	C		99	
M	0380	TDT	Details of Transport	M	1		



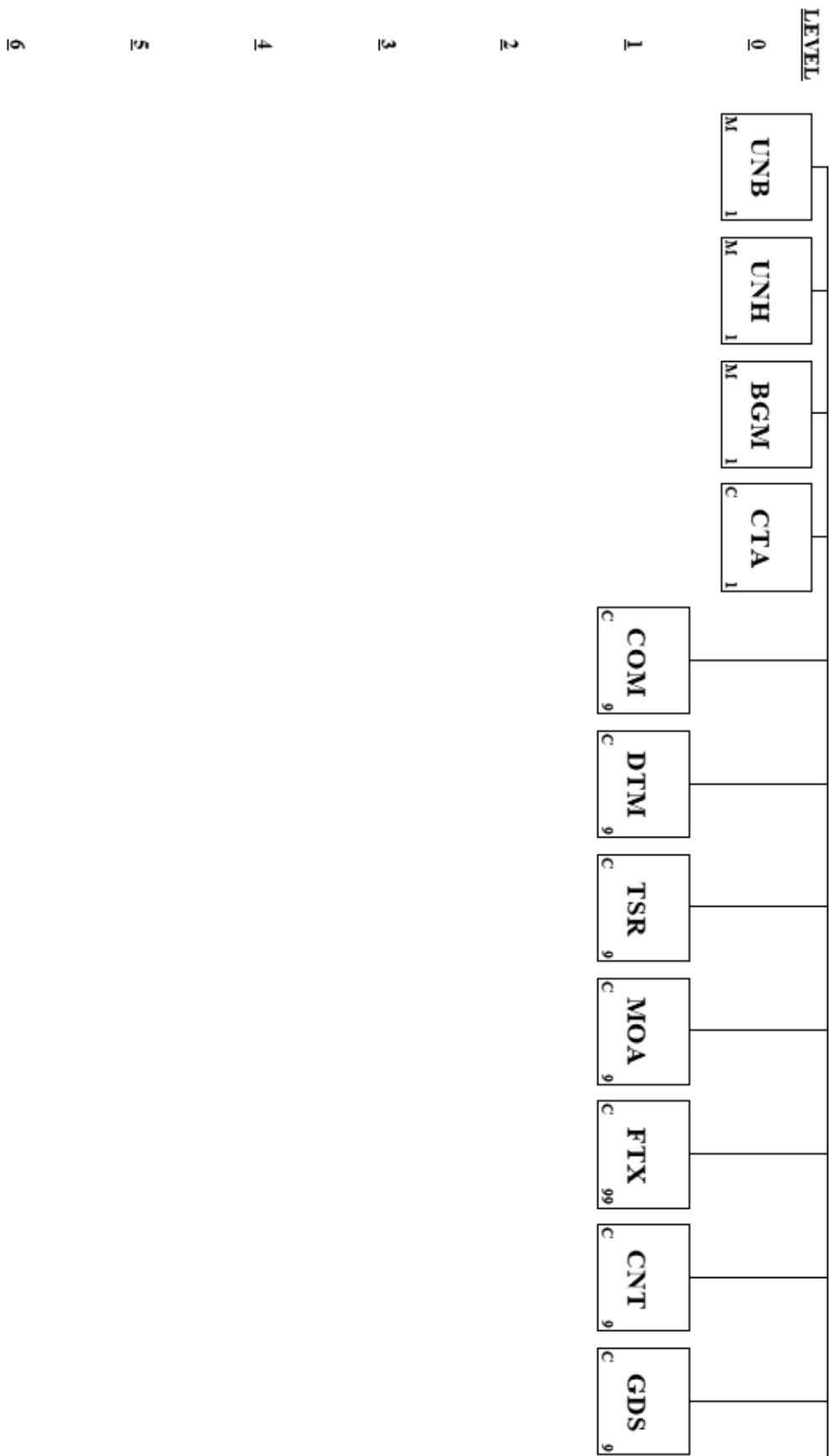
X	0390	DTM	Date/Time/Period	C	9
X	0400	TSR	Transport Service Requirements	C	9
	0410		Segment Group 8: LOC-DTM	C	99
M	0420	LOC	Place/Location Identification	M	1
X	0430	DTM	Date/Time/Period	C	9
X	0440		Segment Group 9: RFF-DTM	C	9
X	0450	RFF	Reference	M	1
X	0460	DTM	Date/Time/Period	C	1
	0470		Segment Group 10: NAD-LOC-SG11-SG12-SG13-SG14-SG15	C	99
M	0480	NAD	Name and Address	M	1
X	0490	LOC	Place/Location Identification	C	9
	0500		Segment Group 11: CTA-COM	C	9
M	0510	CTA	Contact Information	M	1
	0520	COM	Communication Contact	C	9
X	0530		Segment Group 12: DOC-DTM	C	9
X	0540	DOC	Document/Message Details	M	1
X	0550	DTM	Date/Time/Period	C	1
X	0560		Segment Group 13: RFF-DTM	C	9
X	0570	RFF	Reference	M	1
X	0580	DTM	Date/Time/Period	C	9
	0590		Segment Group 14: CPI-RFF-CUX-LOC-MOA	C	9
M	0600	CPI	Charge Payment Instructions	M	1
X	0610	RFF	Reference	C	99
X	0620	CUX	Currencies	C	1
	0630	LOC	Place/Location Identification	C	9
X	0640	MOA	Monetary Amount	C	9
X	0650		Segment Group 15: TSR-RFF-LOC-TPL-FTX	C	99
X	0660	TSR	Transport Service Requirements	M	1
X	0670	RFF	Reference	C	1
X	0680	LOC	Place/Location Identification	C	1
X	0690	TPL	Transport Placement	C	1
X	0700	FTX	Free Text	C	9
	0710		Segment Group 16: GID-HAN-TMP-RNG-TMD-LOC-MOA-PIA- FTX-PCD-SG17-GDS-SG18-SG19-SG20-SG21- SG22-SG23-SG25-SG27	C	999
M	0720	GID	Goods Item Details	M	1
X	0730	HAN	Handling Instructions	C	1
X	0740	TMP	Temperature	C	1
X	0750	RNG	Range Details	C	1
X	0760	TMD	Transport Movement Details	C	1
X	0770	LOC	Place/Location Identification	C	9
X	0780	MOA	Monetary Amount	C	9
	0790	PIA	Additional Product Id	C	9
	0800	FTX	Free Text	C	9
X	0810	PCD	Percentage Details	C	9
X	0820		Segment Group 17: NAD-DTM	C	9
X	0830	NAD	Name and Address	M	1
X	0840	DTM	Date/Time/Period	C	1

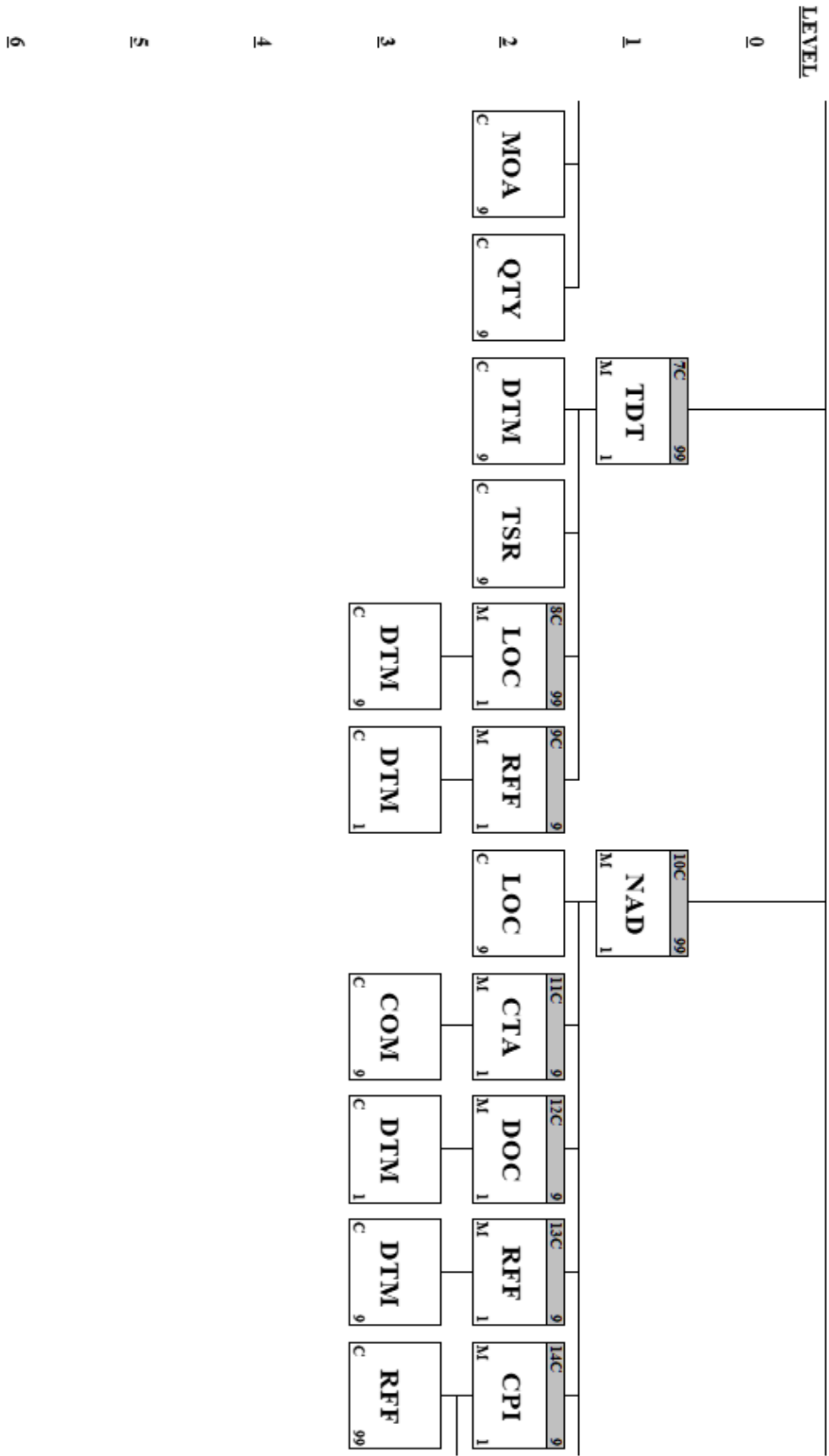


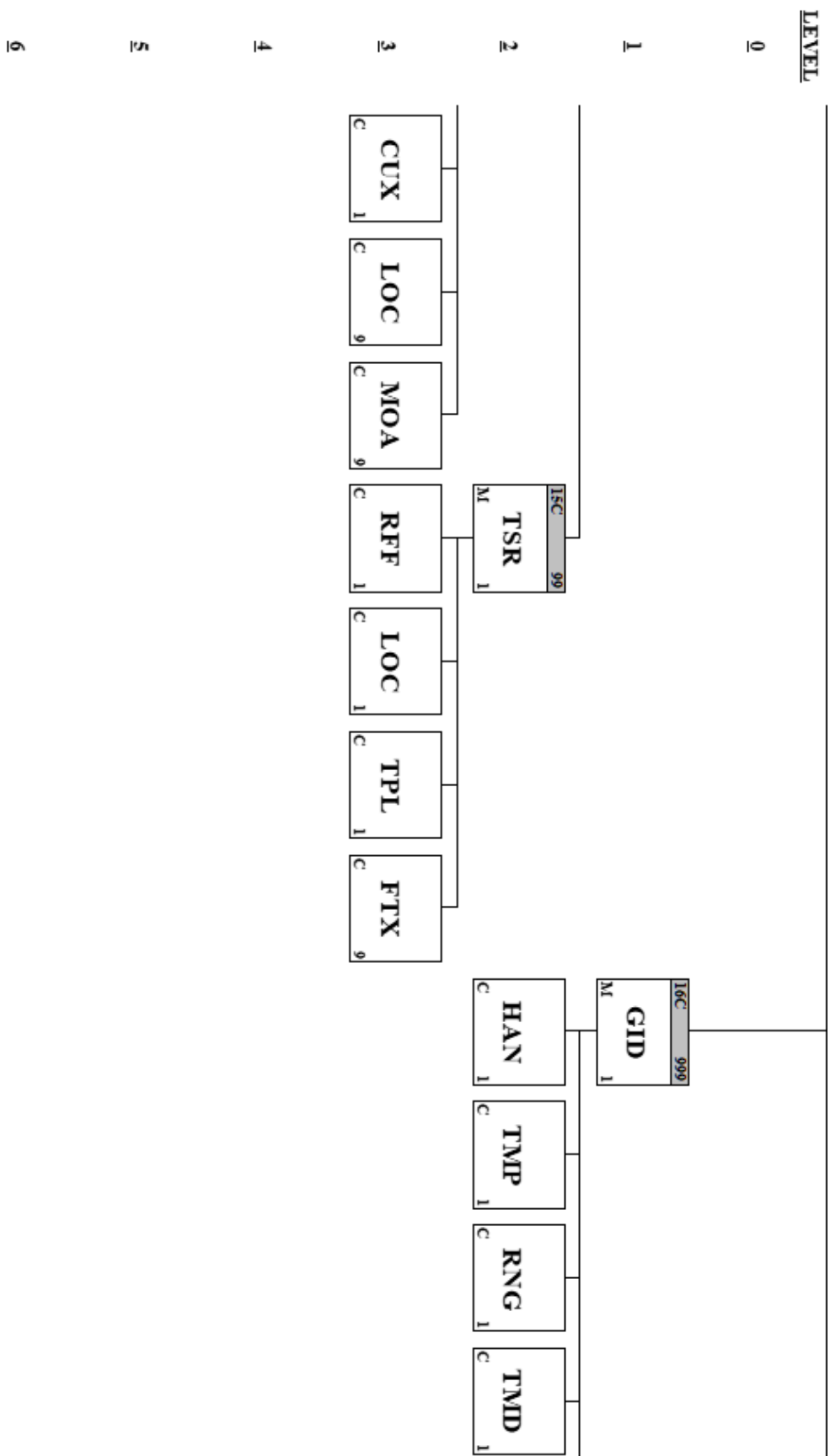
X	0850	GDS	Nature of Cargo	C	9
	0860		Segment Group 18: MEA-EQN	C	99
M	0870	MEA	Measurements	M	1
X	0880	EQN	Number of Units	C	1
	0890		Segment Group 19: DIM-EQN	C	99
M	0900	DIM	Dimensions	M	1
X	0910	EQN	Number of Units	C	1
	0920		Segment Group 20: RFF-DTM	C	9
M	0930	RFF	Reference	M	1
X	0940	DTM	Date/Time/Period	C	9
X	0950		Segment Group 21: PCI-RFF-DTM-GIN	C	9
X	0960	PCI	Package Identification	M	1
X	0970	RFF	Reference	C	1
X	0980	DTM	Date/Time/Period	C	1
X	0990	GIN	Goods Identity Number	C	9
X	1000		Segment Group 22: DOC-DTM	C	9
X	1010	DOC	Document/Message Details	M	1
X	1020	DTM	Date/Time/Period	C	9
X	1030		Segment Group 23: TPL-SG24	C	9
X	1040	TPL	Transport Placement	M	1
X	1050		Segment Group 24: MEA-EQN	C	9
X	1060	MEA	Measurements	M	1
X	1070	EQN	Number of Units	C	1
	1080		Segment Group 25: SGP-SG26	C	999
M	1090	SGP	Split Goods Placement	M	1
	1100		Segment Group 26: MEA-EQN	C	9
M	1110	MEA	Measurements	M	1
X	1120	EQN	Number of Units	C	1
	1130		Segment Group 27: DGS-FTX-SG28-SG29-SG30	C	99
M	1140	DGS	Dangerous Goods	M	1
	1150	FTX	Free Text	C	99
	1160		Segment Group 28: CTA-COM	C	9
M	1170	CTA	Contact Information	M	1
M	1180	COM	Communication Contact	M	9
	1190		Segment Group 29: MEA-EQN	C	9
M	1200	MEA	Measurements	M	1
X	1210	EQN	Number of Units	C	1
X	1220		Segment Group 30: SGP-SG31	C	999
X	1230	SGP	Split Goods Placement	M	1
X	1240		Segment Group 31: MEA-EQN	C	9
X	1250	MEA	Measurements	M	1
X	1260	EQN	Number of Units	C	1
	1270		Segment Group 32: EQD-EQN-TMD-MEA-DIM-TPL-HAN-TMP- FTX-RFF-SG33-SG35	C	999
M	1280	EQD	Equipment Details	M	1
	1290	EQN	Number of Units	C	1
	1300	TMD	Transport Movement Details	C	1

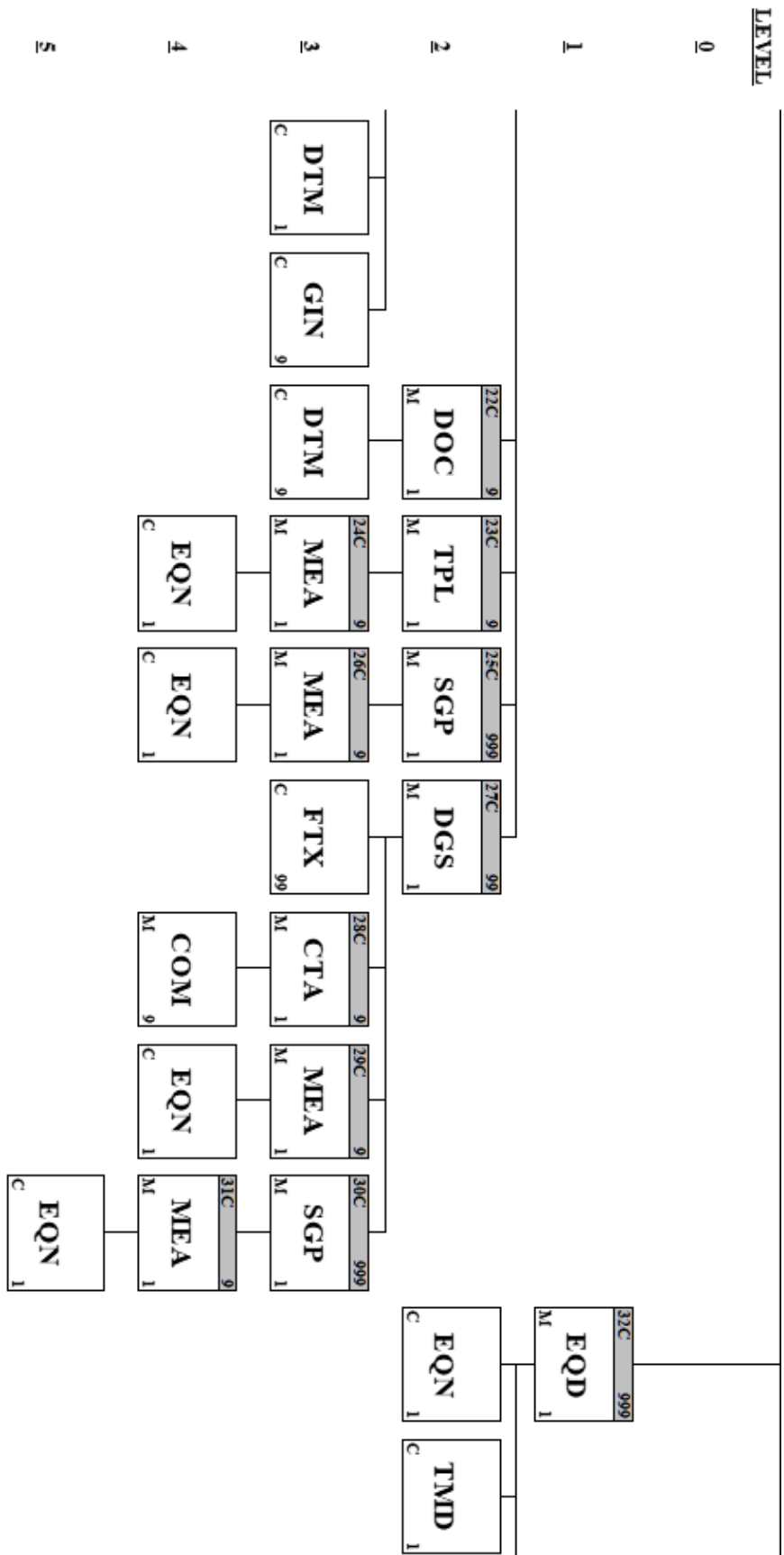


	1310	MEA	Measurements	C	9
	1320	DIM	Dimensions	C	9
X	1330	TPL	Transport Placement	C	9
	1340	HAN	Handling Instructions	C	1
	1350	TMP	Temperature	C	1
	1360	FTX	Free Text	C	9
	1370	RFF	Reference	C	9
	1380	Segment Group 33: NAD-DTM-SG34		C	9
M	1390	NAD	Name and Address	M	1
X	1400	DTM	Date/Time/Period	C	1
	1410	Segment Group 34: CTA-COM		C	9
M	1420	CTA	Contact Information	M	1
	1430	COM	Communication Contact	C	9
	1440	Segment Group 35: DGS-FTX-SG36		C	99
X	1450	DGS	Dangerous Goods	M	1
X	1460	FTX	Free Text	C	9
	1470	Segment Group 36: CTA-COM		C	9
X	1480	CTA	Contact Information	M	1
X	1490	COM	Communication Contact	C	9
M	1500	UNT	Message Trailer	M	1
M	1510	UNZ	Interchange Trailer	M	1



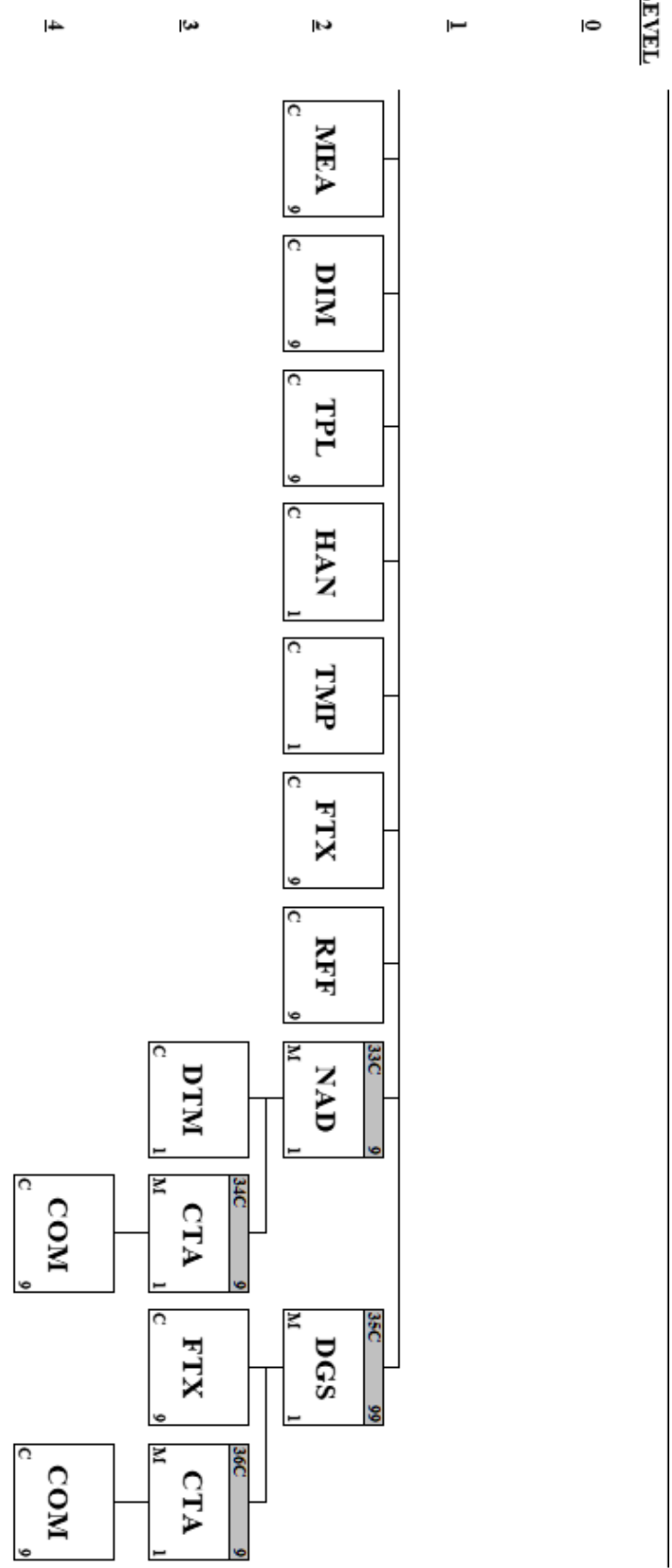


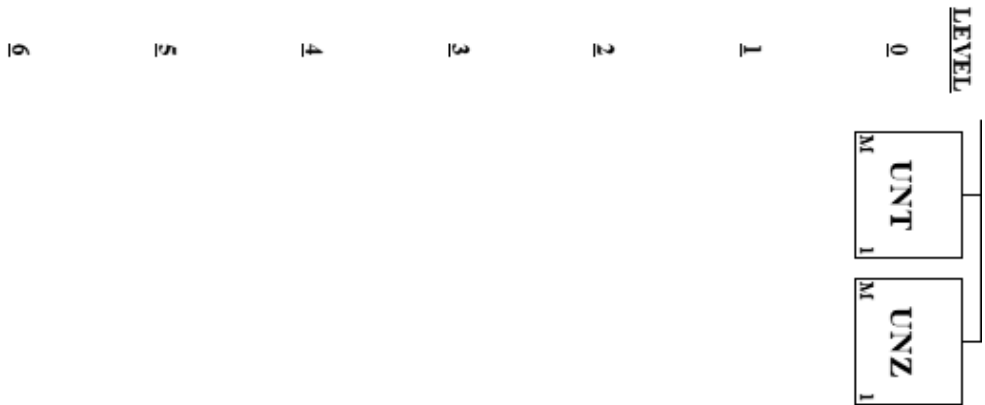






LEVEL







Segment: UNB Interchange Header

Position: 0010

Group:

Level: 0

Usage: Mandatory

Max Use: 1

Purpose: A service segment starting and uniquely identifying a message. The message type code for the Firm booking message is IFTMBF.

Note: Firm booking messages conforming to this document must contain the following data in segment UNH, composite S009:

Data element 0065 IFTMBF 0052 D 0054 99B
0051 UN

Comments:

Notes:

Example Syntax:
UNB+UNOC:3+SENDERID:ZZZ+HAMSUD:ZZZ+160705:1318+125'

Data Element Summary

<u>Attributes</u>	<u>Data Element</u>	<u>Component Element</u>	<u>Name</u>		
M	S001		SYNTAX IDENTIFIER	M	1
			Identification of the agency controlling the syntax and indication of syntax level.		
M		0001	Syntax identifier	M	a4
			Coded identification of the agency controlling a syntax and syntax level used in an interchange.		
			Supported values:		
			UNOC UN/ECE level C		
			As defined in ISO 8859-1 : Information processing - Part 1: Latin alphabet No. 1.		
M		0002	Syntax version number	M	n1
			Version number of the syntax identified in the syntax identifier (0001).		
			Supported values:		
			3 Version 3		
			ISO 9735 Amendment 1:1992.		
M	S002		INTERCHANGE SENDER	M	1
			Identification of the sender of the interchange.		
M		0004	Sender identification	M	an..35
			Name or coded representation of the sender of a data interchange.		
			Customer ID		
		0007	Partner identification code qualifier	C	an..4
			Qualifier referring to the source of codes for the identifiers of interchanging partners.		
			Supported values:		
			ZZZ Mutually defined		
X		0008	Address for reverse routing	C	an..14
M	S003		INTERCHANGE RECIPIENT	M	1
			Identification of the recipient of the interchange.		
M		0010	Recipient identification	M	an..35
			Name or coded representation of the recipient of a data interchange.		
			Supported values:		
			HAMSUD Hamburg Süd		
		0007	Partner identification code qualifier	C	an..4
			Qualifier referring to the source of codes for the identifiers of interchanging partners.		



Supported values:

			ZZZ	Mutually defined		
X		0014	Routing address		C	an..14
M	S004		DATE AND TIME OF PREPARATION		M	1
			Date and time of preparation of the interchange.			
M		0017	Date of preparation		M	n6
			Local date when an interchange or a functional group was prepared.			
M		0019	Time of preparation		M	n4
			Local time of day when an interchange or a functional group was prepared.			
M	0020		INTERCHANGE CONTROL REFERENCE		M	1 an..14
			Unique reference assigned by the sender to an interchange.			
X	S005		RECIPIENTS REFERENCE PASSWORD		C	1
			Reference or password as agreed between the communicating partners.			
X		0022	Recipient reference/password		M	an..14
			Unique reference assigned by the recipient to the data interchange or a password to the recipient's system or to a third party network as specified in the partners interchange agreement.			
X		0025	Recipient reference/password qualifier		C	an2
			Qualifier for the recipient's reference or password.			
			Refer to D.99B Data Element Dictionary for acceptable code values.			
X	0026		APPLICATION REFERENCE		C	1 an..14
X	0029		PROCESSING PRIORITY CODE		C	1 a1
			Refer to D.99B Data Element Dictionary for acceptable code values.			
X	0031		ACKNOWLEDGEMENT REQUEST		C	1 n1
			Refer to D.99B Data Element Dictionary for acceptable code values.			
X	0032		COMMUNICATIONS AGREEMENT ID		C	1 an..35
X	0035		TEST INDICATOR		C	1 n1
			Refer to D.99B Data Element Dictionary for acceptable code values.			



Segment: UNH Message Header
Position: 0020
Group:
Level: 0
Usage: Mandatory
Max Use: 1
Purpose: A segment to indicate the beginning of a message and to transmit identifying number and type of the message.

Comments:

Notes:

Example Syntax:

UNH+123869+IFTMBF:D:99B:UN'

Data Element Summary

<u>Attributes</u>	<u>Data Element</u>	<u>Component Element</u>	<u>Name</u>			
M	0062		MESSAGE REFERENCE NUMBER	M	1	an..14
			Unique message reference assigned by the sender.			
M	S009		MESSAGE IDENTIFIER	M	1	
			Identification of the type, version etc. of the message being interchanged.			
M		0065	Message type identifier	M		an..6
			Code identifying a type of message and assigned by its controlling agency.			
			Supported values:			
			IFTMBF Firm booking message			
			A code to identify the firm booking message.			
M		0052	Message type version number	M		an..3
			Version number of a message type.			
			Supported values:			
			D Draft version/UN/EDIFACT Directory			
			Message approved and issued as a draft message (Valid for directories published after March 1993 and prior to March 1997). Message approved as a standard message (Valid for directories published after March 1997).			
M		0054	Message type release number	M		an..3
			Release number within the current message type version number (0052).			
			Supported values:			
			99B Release 1999 - B			
			Message approved and issued in the second 1999 release of the UNTDID (United Nations Trade Data Interchange Directory).			
M		0051	Controlling agency	M		an..2
			Code identifying the agency controlling the specification, maintenance and publication of the message type.			
			Supported values:			
			UN UN/CEFACT			
			United Nations Centre for the Facilitation of procedures and practices for Administration, Commerce and Transport (UN/CEFACT).			
		0057	Association assigned code	C		an..6
			Code, assigned by the association responsible for the design and maintenance of the message type concerned, which further identifies the message.			
	0068		COMMON ACCESS REFERENCE	C	1	an..35
			Reference serving as a key to relate all subsequent transfers of data to the same business case or file.			



	S010	STATUS OF THE TRANSFER	C	1
		Statement that the message is one in a sequence of transfers relating to the same topic.		
M	0070	Sequence message transfer number	M	n..2
		Number assigned by the sender indicating that the message is an addition or change of a previously sent message relating to the same topic.		
	0073	First/last sequence message transfer indication	C	a1
		Indication used for the first and last message in a sequence of the same type of message relating to the same topic.		
		Refer to D.99B Data Element Dictionary for acceptable code values.		



Segment: **BGM** Beginning of Message
Position: 0030
Group:
Level: 0
Usage: Mandatory
Max Use: 1
Purpose: A segment to identify a person or department to whom communication should be directed.

Comments:

Notes: Example Syntax:

BGM+335+69789+9'

Data Element Summary

<u>Attributes</u>	<u>Data Element</u>	<u>Component Element</u>	<u>Name</u>		
	C002		DOCUMENT/MESSAGE NAME	C	1
			Identification of a type of document/message by code or name. Code preferred.		
		1001	Document name code	C	an..3
			Code specifying the document name.		
			Supported values:		
			335	Booking request	
				Document/message issued by a supplier to a carrier requesting space to be reserved for a specified consignment, indicating desirable conveyance, despatch time, etc.	
X		1131	Code list identification code	C	an..3
			Refer to D.99B Data Element Dictionary for acceptable code values.		
X		3055	Code list responsible agency code	C	an..3
			Refer to D.99B Data Element Dictionary for acceptable code values.		
X		1000	Document name	C	an..35
	C106		DOCUMENT/MESSAGE IDENTIFICATION	C	1
			Identification of a document/message by its number and eventually its version or revision.		
		1004	Document/message number	C	an..35
			Reference number assigned to the document/message by the issuer.		
			Unique number.		
X		1056	Version	C	an..9
X		1060	Revision number	C	an..6
	1225		MESSAGE FUNCTION CODE	C	1 an..3
			Code indicating the function of the message.		
			Supported values:		
			1	Cancellation	
				Message cancelling a previous transmission for a given transaction.	
			4	Change	
				Message containing items to be changed.	
			5	Replace	
				Message replacing a previous message.	
			9	Original	
				Initial transmission related to a given transaction.	
X	4343		RESPONSE TYPE CODE	C	1 an..3



Refer to D.99B Data Element Dictionary for acceptable code values.



Segment: **CTA Contact Information**
Position: 0040
Group:
Level: 0
Usage: Conditional (Optional)
Max Use: 1
Purpose: A segment to identify a communication number of a person or department to whom communication should be directed.

Comments:
Notes: Example Syntax:
 CTA+IC+:Jennifer Rodriguez'

Data Element Summary

<u>Attributes</u>	<u>Data Element</u>	<u>Component Element</u>	<u>Name</u>			
	3139		CONTACT FUNCTION CODE	C	1	an..3
			Code specifying the function of a contact (e.g. department or person).			
			Supported values:			
		IC	Information contact			
			Department/person to contact for questions regarding transactions.			
	C056		DEPARTMENT OR EMPLOYEE DETAILS	C	1	
			Code and/or name of a department or employee. Code preferred.			
X		3413	Department or employee identification	C		an..17
		3412	Department or employee	C		an..35
			The department or person within an organizational entity.			



Segment: **COM** Communication Contact
Position: 0050
Group:
Level: 1
Usage: Conditional (Optional)
Max Use: 9
Purpose: A segment to indicate a date and time applying to the whole message, e.g., date and time of document issue.

Comments:

Notes: Contact details of EDI partner.

Example Syntax:

COM+john.doe@partnerdomain.com:EM'
 COM+?+494012345678:TE'

Data Element Summary

<u>Attributes</u>	<u>Data Element</u>	<u>Component Element</u>	<u>Name</u>		
M	C076		COMMUNICATION CONTACT	M	3
			Communication number of a department or employee in a specified channel.		
M		3148	Communication number	M	an..512
			The communication number.		
M		3155	Communication number code qualifier	M	an..3
			Code qualifying the communication number.		
Supported values:					
		EM	Electronic mail Exchange of mail by electronic means.		
		FX	Telefax Device used for transmitting and reproducing fixed graphic material (as printing) by means of signals over telephone lines or other electronic transmission media.		
		TE	Telephone Voice/data transmission by telephone.		



Segment: **DTM** Date/Time/Period
Position: 0060
Group:
Level: 1
Usage: Conditional (Optional)
Max Use: 9
Purpose: A segment to identify the contract, conditions of carriage, services, and priority requirements for the transport.

Comments:

Notes:

Example Syntax:

DTM+137:20160705:102'

Data Element Summary

<u>Attributes</u>	<u>Data Element</u>	<u>Component Element</u>	<u>Name</u>		
M	C507		DATE/TIME/PERIOD	M	1
			Date and/or time, or period relevant to the specified date/time/period type.		
M		2005	Date/time/period function code qualifier	M	an..3
			Code giving specific meaning to a date, time or period.		
			Supported values:		
		137	Document/message date/time (2006) Date/time when a document/message is issued. This may include authentication.		
		2380	Date/time/period value	C	an..35
			The value of a date, a date and time, a time or of a period in a specified representation.		
		2379	Date/time/period format code	C	an..3
			Code specifying the representation of a date, time or period.		
			Supported values:		
		102	CCYYMMDD Calendar date: C = Century ; Y = Year ; M = Month ; D = Day.		
		203	CCYYMMDDHHMM Calendar date including time with minutes: C=Century; Y=Year; M=Month; D=Day; H=Hour; M=Minutes.		



Segment: **TSR** Transport Service Requirements
Position: 0070
Group:
Level: 1
Usage: Conditional (Optional)
Max Use: 9
Purpose: A segment to specify a monetary amount, such as prepaid amount, discount or total amount.

Comments:

Notes: Example Syntax:

TSR+30'

Data Element Summary

<u>Attributes</u>	<u>Data Element</u>	<u>Component Element</u>	<u>Name</u>		
	C536		CONTRACT AND CARRIAGE CONDITION	C	1
			To identify a contract and carriage condition.		
M		4065	Contract and carriage condition code	M	an..3
			Code to identify the conditions of contract and carriage.		
			Supported values:		
			27 Door-to-door		
			The carrier is responsible for the intermodal carriage of cargo including both the pre-carriage and the on-carriage.		
			28 Door-to-pier		
			The carrier is responsible for the intermodal carriage of cargo including the pre-carriage, but excluding the on-carriage.		
			29 Pier-to-door		
			The carrier is responsible for the intermodal carriage of cargo including the on-carriage, but excluding the pre-carriage.		
			30 Pier-to-pier		
			The carrier of intermodal cargo is only responsible for the main carriage.		
X		1131	Code list identification code	C	an..3
			Refer to D.99B Data Element Dictionary for acceptable code values.		
X		3055	Code list responsible agency code	C	an..3
			Refer to D.99B Data Element Dictionary for acceptable code values.		
X	C233		SERVICE	C	1
			To identify a service (which may constitute an additional component to a basic contract).		
X		7273	Service requirement code	M	an..3
			Code specifying a service requirement.		
			Refer to D.99B Data Element Dictionary for acceptable code values.		
X		1131	Code list identification code	C	an..3
			Identification of a code list.		
			Refer to D.99B Data Element Dictionary for acceptable code values.		
X		3055	Code list responsible agency code	C	an..3
			Code specifying the agency responsible for a code list.		
			Refer to D.99B Data Element Dictionary for acceptable code values.		
X		7273	Service requirement code	C	an..3
			Code specifying a service requirement.		



X		1131	Refer to D.99B Data Element Dictionary for acceptable code values. Code list identification code	C	an..3
			Identification of a code list.		
X		3055	Refer to D.99B Data Element Dictionary for acceptable code values. Code list responsible agency code	C	an..3
			Code specifying the agency responsible for a code list.		
X	C537		Refer to D.99B Data Element Dictionary for acceptable code values. TRANSPORT PRIORITY	C	1
			To indicate the priority of requested transport service.		
X		4219	Transport priority, coded	M	an..3
			Coded priority of requested transport service.		
X		1131	Refer to D.99B Data Element Dictionary for acceptable code values. Code list identification code	C	an..3
			Identification of a code list.		
X		3055	Refer to D.99B Data Element Dictionary for acceptable code values. Code list responsible agency code	C	an..3
			Code specifying the agency responsible for a code list.		
X	C703		Refer to D.99B Data Element Dictionary for acceptable code values. NATURE OF CARGO	C	1
			Rough classification of a type of cargo.		
X		7085	Nature of cargo, coded	M	an..3
			Code indicating the type of cargo as a rough classification.		
X		1131	Refer to D.99B Data Element Dictionary for acceptable code values. Code list identification code	C	an..3
			Identification of a code list.		
X		3055	Refer to D.99B Data Element Dictionary for acceptable code values. Code list responsible agency code	C	an..3
			Code specifying the agency responsible for a code list.		
			Refer to D.99B Data Element Dictionary for acceptable code values.		



Segment: **FTX** Free Text
Position: 0090
Group:
Level: 1
Usage: Conditional (Optional)
Max Use: 99
Purpose: A segment to specify totals for a consignment.
Comments:
Notes:

Example Syntax:
 FTX+AAI+++US SHIPMENTS HAVE TO BE REMOVED BEFOREHAND.'

Data Element Summary

<u>Attributes</u>	<u>Data Element</u>	<u>Component Element</u>	<u>Name</u>			
M	4451		TEXT SUBJECT CODE QUALIFIER	M	1	an..3
			Code specifying the subject of the text.			
			Supported values:			
		AAI	General information			
		CCI	Customs clearance instructions			
			Any coded or clear instruction agreed by customer and carrier regarding the declaration of the goods.			
		CUS	Customs declaration information			
			Note contains customs declaration information.			
X	4453		TEXT FUNCTION, CODED	C	1	an..3
			Refer to D.99B Data Element Dictionary for acceptable code values.			
X	C107		TEXT REFERENCE	C	1	
			Coded reference to a standard text and its source.			
X		4441	Free text value code	M		an..17
			Code specifying free form text.			
X		1131	Code list identification code	C		an..3
			Identification of a code list.			
			Refer to D.99B Data Element Dictionary for acceptable code values.			
X		3055	Code list responsible agency code	C		an..3
			Code specifying the agency responsible for a code list.			
			Refer to D.99B Data Element Dictionary for acceptable code values.			
	C108		TEXT LITERAL	C	1	
			Free text; one to five lines.			
M		4440	Free text value	M		an..512
			Free form text.			
		4440	Free text value	C		an..512
			Free form text.			
		4440	Free text value	C		an..512
			Free form text.			
		4440	Free text value	C		an..512
			Free form text.			
		4440	Free text value	C		an..512
			Free form text.			
X	3453		LANGUAGE NAME CODE	C	1	an..3
X	4447		TEXT FORMATTING, CODED	C	1	an..3
			Refer to D.99B Data Element Dictionary for acceptable code values.			



Group: **LOC** Segment Group 1: Place/Location Identification
Position: 0120
Group:
Level: 1
Usage: Conditional (Optional)
Max Use: 99
Purpose: A segment to identify a location applying to the entire message.

Segment Summary

	Pos.	Seg.		Req.	Max.	Group:
	No.	ID	Name	Des.	Use	Repeat
M	0130	LOC	Place/Location Identification	M		1



Segment: **LOC** Place/Location Identification
Position: 0130 (Trigger Segment)
Group: Segment Group 1 (Place/Location Identification) Conditional (Optional)
Level: 1
Usage: Mandatory
Max Use: 1
Purpose: A segment to indicate date(s) and time(s) relating to the location.

Comments:

Notes:

Example Syntax:

LOC+197+NLR TM:181:6:ROTTERDAM+:::NETHERLANDS'

Data Element Summary

<u>Attributes</u>	<u>Data Element</u>	<u>Component Element</u>	<u>Name</u>			
M	3227		LOCATION FUNCTION CODE QUALIFIER	M	1	an..3
			Code identifying the function of a location.			
			Supported values:			
		7	Place of delivery (3246) Place to which the goods are to be finally delivered under transport contract terms (operational term).			
		88	Place of receipt Identification of the location at which the cargo is actually received.			
		197	Place of inquiry Place to which an inquiry is made.			
	C517		LOCATION IDENTIFICATION	C	1	
			Identification of a location by code or name.			
		3225	Location name code	C		an..25
			Code specifying the name of the location.			
		1131	Code list identification code	C		an..3
			Identification of a code list.			
			Supported values:			
		181	Activity Code identifying activities.			
		3055	Code list responsible agency code	C		an..3
			Code specifying the agency responsible for a code list.			
			Supported values:			
		6	UN/ECE (United Nations - Economic Commission for Europe)			
		86	Assigned by party originating the message Codes assigned by the party originating the message.			
		3224	Location name	C		an..256
			Name of the location.			
	C519		RELATED LOCATION ONE IDENTIFICATION	C	1	
			Identification the first related location by code or name. Used to provide country information			
		3223	Related place/location one identification	C		an..25
			Specification of the first related place/location by code. 2 character ISO country code			



		1131	Code list identification code	C	an..3
			Identification of a code list.		
			Supported values		
			162 Country		
			Identification of a country.		
		3055	Code list responsible agency code	C	an..3
			Code specifying the agency responsible for a code list.		
			Supported values:		
			5 ISO (International Organization for Standardization)		
		3222	Related place/location one	C	an..70
			Specification of the first related place/location by name.		
X	C553		RELATED LOCATION TWO IDENTIFICATION	C	1
			Identification of second related location by code or name.		
X		3233	Related place/location two identification	C	an..25
			Specification of a second related place/location by code.		
X		1131	Code list identification code	C	an..3
			Identification of a code list.		
			Refer to D.99B Data Element Dictionary for acceptable code values.		
X		3055	Code list responsible agency code	C	an..3
			Code specifying the agency responsible for a code list.		
			Refer to D.99B Data Element Dictionary for acceptable code values.		
X		3232	Related place/location two	C	an..70
			Specification of a second related place/location by name.		
X	5479		RELATION, CODED	C	1 an..3



Group: RFF Segment Group 3: Reference
Position: 0180
Group:
Level: 1
Usage: Conditional (Optional)
Max Use: 99
Purpose: A segment to express a reference which applies to the entire message such as: the document/message number that is to be updated by this very message (according to data element 1225 Message function code in segment BGM), booking reference, order number, insurance contract, etc.

Segment Summary

	<u>Pos. No.</u>	<u>Seg. ID</u>	<u>Name</u>	<u>Req. Des.</u>	<u>Max. Use</u>	<u>Group: Repeat</u>
M	0190	RFF	Reference	M	1	



Segment: **RFF Reference**
Position: 0190 (Trigger Segment)
Group: Segment Group 3 (Reference) Conditional (Optional)
Level: 1
Usage: Mandatory
Max Use: 1
Purpose: A segment to indicate date and time relating to the reference.

Comments:

Notes:

Example Syntax:
RFF+BN:L922H-97'

Data Element Summary

<u>Attributes</u>	<u>Data Element</u>	<u>Component Element</u>	<u>Name</u>		
M	C506		REFERENCE	M	1
			Identification of a reference.		
M		1153	Reference function code qualifier	M	an..3
			Code giving specific meaning to a reference segment or a reference number.		
			Supported values:		
			AFG	Tariff number	
			AGB	Contract party reference number	
				Reference number assigned to a party for a particular contract.	
			AGE	Agent's reference	
				Reference number of the agent.	
			AKG	Vehicle Identification Number (VIN)	
				The identification number which uniquely distinguishes one vehicle from another through the lifespan of the vehicle.	
			ANT	Consignee's reference	
				Reference number of the consignee.	
			BM	Bill of lading number	
				Reference number assigned to a bill of lading, see: 1001 = 705.	
			BN	Booking reference number	
				[1016] Reference number assigned by the carrier or his agent when cargo space is reserved prior to loading.	
			CT	Contract number	
				Reference number of a contract concluded between parties.	
			EX	Export licence number	
				[1208] Reference number assigned by issuing authority to an Export Licence.	
			FF	Freight forwarder's reference number	
				[1460] Reference number assigned to the consignment by the freight forwarder.	
			LI	Line item reference number	
				(1156) Reference number identifying a particular line in a document.	
			ON	Order number (purchase)	
				[1022] Reference number assigned by the buyer to an order.	



	SI	SID (Shipper's identifying number for shipment) Description to be provided.		
	1154	Reference identifier Identifies a reference. Only 16 characters!	C	an..16
X	1156	Line number	C	an..6
X	4000	Reference version identifier	C	an..35
X	1060	Revision number	C	an..6



Group: **TDT Segment Group 7: Details of Transport**
Position: 0370
Group:
Level: 1
Usage: Conditional (Optional)
Max Use: 99
Purpose: A segment to indicate information related to a certain stage of the transport, such as mode, means and carrier.

Segment Summary

	<u>Pos. No.</u>	<u>Seg. ID</u>	<u>Name</u>	<u>Req. Des.</u>	<u>Max. Use</u>	<u>Group: Repeat</u>
M	0380	TDT	Details of Transport	M	1	
	0410		Segment Group 8: Place/Location Identification	C		99



Segment: **TDT Details of Transport**
Position: 0380 (Trigger Segment)
Group: Segment Group 7 (Details of Transport) Conditional (Optional)
Level: 1
Usage: Mandatory
Max Use: 1
Purpose: A segment to indicate departure/arrival date and time.
Comments:
Notes:

```

Example Syntax:

TDT+20+VOY00398+1+13:OCEAN+SCAC:172:182+++LLOYDS
CD::11:VESSEL
NAME'
  
```

Data Element Summary

<u>Attributes</u>	<u>Data Element</u>	<u>Component Element</u>	<u>Name</u>			
M	8051		TRANSPORT STAGE CODE QUALIFIER	M	1	an..3
			Code qualifying a specific stage of transport.			
			Supported values:			
			10 Pre-carriage transport			
			Transport by which the goods are moved prior to their main carriage transport.			
			20 Main-carriage transport			
			The primary stage in the movement of cargo from the point of origin to the intended destination.			
			30 On-carriage transport			
			Transport by which the goods are moved after the main carriage transport.			
	8028		CONVEYANCE REFERENCE NUMBER	C	1	an..17
			Unique reference given by the carrier to a certain journey or departure of a means of transport (generic term).			
			Voyage number			
	C220		MODE OF TRANSPORT	C	1	
			Method of transport code or name. Code preferred.			
		8067	Transport mode name code	C		an..3
			Code specifying the name of a mode of transport.			
			Supported values:			
			1 Maritime transport			
			2 Rail transport			
			3 Road transport			
			8 Inland water transport			
			23 Rail / Road			
			28 Rail / Water			
			38 Road / Water			
X		8066	Transport mode name	C		an..17
	C228		TRANSPORT MEANS	C	1	
			Code and/or name identifying the type of means of transport.			
		8179	Transport means description code	C		an..8
			Code specifying the means of transport.			
			Supported values:			
			8 Container ship			
			Vessel capable of carrying containers and other			



		11	cargo. Ship		
		13	A large vessel navigating deep water. Ocean vessel		
		16	An ocean-going vessel that is not a ship. Barge		
		25	A category of boat used to transport material over water. Rail express		
		31	Description to be provided. Truck		
			An automotive vehicle for hauling goods.		
	8178	Transport means description		C	an..17
		Free form description of the means of transport.			
	C040	CARRIER		C	1
		Identification of a carrier by code and/or by name. Code preferred.			
	3127	Carrier identification		C	an..17
		Identification of party undertaking or arranging transport of goods between named points.			
	1131	Code list identification code		C	an..3
		Identification of a code list.			
		172	Carriers Code list identifying carriers.		
	3055	Code list responsible agency code		C	an..3
		Code specifying the agency responsible for a code list.			
		182	US, Standard Carrier Alpha Code (Motor) Organisation maintaining the SCAC lists and transportation operating in North America.		
X		3128	Carrier name	C	an..35
X	8101	TRANSIT DIRECTION INDICATOR CODE		C	1 an..3
		Refer to D.99B Data Element Dictionary for acceptable code values.			
X	C401	EXCESS TRANSPORTATION INFORMATION		C	1
		To provide details of reason for, and responsibility for, use of transportation other than normally utilized.			
X		8457	Excess transportation reason, coded	M	an..3
		Indication of reason for excess transportation.			
X		8459	Excess transportation responsibility, coded	M	an..3
		Indication of responsibility for excess transportation.			
X		7130	Customer authorization number	C	an..17
		Customer provided authorization number to allow supplier to ship goods under specific freight conditions. This number will be transmitted back to customer in the dispatch advice message.			
	C222	TRANSPORT IDENTIFICATION		C	1
		Code and/or name identifying the means of transport.			
	8213	Transport means identification name identifier		C	an..9
		Identifies the name of the transport means. Lloyd's Code			
X		1131	Code list identification code	C	an..3
		Refer to D.99B Data Element Dictionary for acceptable code values.			
	3055	Code list responsible agency code		C	an..3



Code specifying the agency responsible for a code list.

11

Lloyd's register of shipping

A register of ocean going vessels maintained by Lloyd's of London.

8212 Transport means identification name C an..35

Name identifying a means of transport.

Vessel name

8453 Nationality of means of transport, coded C an..3

Coded name of the country in which a means of transport is registered.

Country code of Ship's Registry. Must be 2 character ISO code

X 8281 TRANSPORT OWNERSHIP, CODED C 1 an..3

Refer to D.99B Data Element Dictionary for acceptable code values.



Group: **LOC** Segment Group 8: Place/Location Identification
Position: 0410
Group: Segment Group 7 (Details of Transport) Conditional (Optional)
Level: 2
Usage: Conditional (Optional)
Max Use: 99
Purpose: A segment to indicate a location such as origin, destination, stop off, etc. related to this leg of transport.

Segment Summary

	<u>Pos. No.</u>	<u>Seg. ID</u>	<u>Name</u>	<u>Req. Des.</u>	<u>Max. Use</u>	<u>Group: Repeat</u>
M	0420	LOC	Place/Location Identification	M		1



Segment: **LOC** Place/Location Identification
Position: 0420 (Trigger Segment)
Group: Segment Group 8 (Place/Location Identification) Conditional (Optional)
Level: 2
Usage: Mandatory
Max Use: 1
Purpose: A segment to specify a date/time related to the location, such as arrival date/time of a means of transport at a specific location.

Comments:

Notes:

Example Syntax:
 LOC+11+COBUN:181:6:BUENAVENTURA'

Data Element Summary

<u>Attributes</u>	<u>Data Element</u>	<u>Component Element</u>	<u>Name</u>			
M	3227		LOCATION FUNCTION CODE QUALIFIER	M	1	an..3
			Code identifying the function of a location.			
			Supported values:			
		9	Place/port of loading (3334 + 3230) Seaport, airport, freight terminal, rail station or other place at which the goods (cargo) are loaded on to the means of transport being used for their carriage. Start location for each leg			
		11	Place/port of discharge (3392 + 3414) Seaport, airport, freight terminal, rail station or other place at which the goods (cargo) are unloaded from the means of transport having been used for their carriage. End location for each leg			
	C517		LOCATION IDENTIFICATION	C	1	
			Identification of a location by code or name.			
		3225	Location name code	C		an..25
			Code specifying the name of the location.			
			UNLOCODE			
		1131	Code list identification code	C		an..3
			Identification of a code list.			
			Supported values:			
		139	Port A location having facilities for means of transport to load or discharge cargo.			
		3055	Code list responsible agency code	C		an..3
			Code specifying the agency responsible for a code list.			
			Supported values:			
		6	UN/ECE (United Nations - Economic Commission for Europe)			
		86	Assigned by party originating the message Codes assigned by the party originating the message.			
		3224	Location name	C		an..256
			Name of the location.			
			Port name			
	C519		RELATED LOCATION ONE IDENTIFICATION	C	1	



		Identification the first related location by code or name.		
	3223	Related place/location one identification	C	an..25
		Specification of the first related place/location by code. 2 character ISO country code		
	1131	Code list identification code	C	an..3
		Identification of a code list. Supported values:		
		162 Country Identification of a country.		
	3055	Code list responsible agency code	C	an..3
		Code specifying the agency responsible for a code list. 5 ISO (International Organization for Standardization)		
	3222	Related place/location one	C	an..70
		Specification of the first related place/location by name. Country name		
X	C553	RELATED LOCATION TWO IDENTIFICATION	C	1
		Identification of second related location by code or name.		
X	3233	Related place/location two identification	C	an..25
		Specification of a second related place/location by code.		
X	1131	Code list identification code	C	an..3
		Identification of a code list. Refer to D.99B Data Element Dictionary for acceptable code values.		
X	3055	Code list responsible agency code	C	an..3
		Code specifying the agency responsible for a code list. Refer to D.99B Data Element Dictionary for acceptable code values.		
X	3232	Related place/location two	C	an..70
		Specification of a second related place/location by name.		
X	5479	RELATION, CODED	C	1 an..3



Group: **NAD** Segment Group 10: Name and Address
Position: 0470
Group:
Level: 1
Usage: Conditional (Optional)
Max Use: 99
Purpose: A segment to identify the party's name, address, and function.

Segment Summary

	Pos. No.	Seg. ID	Name	Req. Des.	Max. Use	Group: Repeat
M	0480	NAD	Name and Address	M	1	
	0500		Segment Group 11: Contact Information	C		9
	0590		Segment Group 14: Charge Payment Instructions	C		9



Segment: **NAD** Name and Address
Position: 0480 (Trigger Segment)
Group: Segment Group 10 (Name and Address) Conditional (Optional)
Level: 1
Usage: Mandatory
Max Use: 1
Purpose: A segment to indicate location where a specific function will be performed.

Comments:

Notes:

Example Syntax:
NAD+CA+SUDU:160:86'

Data Element Summary

<u>Attributes</u>	<u>Data Element</u>	<u>Component Element</u>	<u>Name</u>			
M	3035		PARTY FUNCTION CODE QUALIFIER	M	1	an..3
			Code giving specific meaning to a party.			
			Supported values:			
		CA	Carrier (3126) Party undertaking or arranging transport of goods between named points.			
		CZ	Consignor (3336) Party which, by contract with a carrier, consigns or sends goods with the carrier, or has them conveyed by him. Synonym: shipper, sender.			
	C082		PARTY IDENTIFICATION DETAILS	C	1	
			Identification of a transaction party by code.			
M		3039	Party identifier	M		an..35
			Code specifying the identity of a party.			
			Supported values:			
		ANRM	Aliana			
		SUDU	Hamburg Süd			
		1131	Code list identification code	C		an..3
			Identification of a code list.			
			Supported values:			
		160	Party identification Identification of parties, corporates, etc.			
		3055	Code list responsible agency code	C		an..3
			Code specifying the agency responsible for a code list.			
			Supported values:			
		16	US, D&B (Dun & Bradstreet Corporation) Identifies the Dun & Bradstreet Corporation, United States.			
		86	Assigned by party originating the message Codes assigned by the party originating the message.			
		192	Shipper's association Code assigned by a shipper's association.			
		ZZZ	Mutually defined			
	C058		NAME AND ADDRESS	C	1	
			Unstructured name and address: one to five lines.			
M		3124	Name and address line	M		an..35
			Free form name and address description.			



		3124	Name and address line	C	an..35
			Free form name and address description.		
		3124	Name and address line	C	an..35
			Free form name and address description.		
		3124	Name and address line	C	an..35
			Free form name and address description.		
X		3124	Name and address line	C	an..35
X	C080		PARTY NAME	C	1
			Identification of a transaction party by name, one to five lines. Party name may be formatted.		
X		3036	Party name	M	an..35
			Name of a party involved in a transaction.		
X		3036	Party name	C	an..35
			Name of a party involved in a transaction.		
X		3036	Party name	C	an..35
			Name of a party involved in a transaction.		
X		3036	Party name	C	an..35
			Name of a party involved in a transaction.		
X		3036	Party name	C	an..35
			Name of a party involved in a transaction.		
X		3045	Party name format code	C	an..3
			Code specifying the representation of a party name. Refer to D.99B Data Element Dictionary for acceptable code values.		
	C059		STREET	C	1
			Street address and/or PO Box number in a structured address: one to four lines.		
M		3042	Street and number/p.o. box	M	an..35
			Street and number in plain language, or Post Office Box No.		
		3042	Street and number/p.o. box	C	an..35
			Street and number in plain language, or Post Office Box No.		
X		3042	Street and number/p.o. box	C	an..35
X		3042	Street and number/p.o. box	C	an..35
X	3164		CITY NAME	C	1 an..35
X	C819		COUNTRY SUB-ENTITY DETAILS	C	1
			To specify a part of a country (eg county or part of a city).		
X		3229	Country sub-entity name code	C	an..9
			Identification of the name of sub-entities (state, province) defined by appropriate governmental agencies.		
X		1131	Code list identification code	C	an..3
			Identification of a code list. Refer to D.99B Data Element Dictionary for acceptable code values.		
X		3055	Code list responsible agency code	C	an..3
			Code specifying the agency responsible for a code list. Refer to D.99B Data Element Dictionary for acceptable code values.		
X		3228	Country sub-entity name	C	an..35
			Name of sub-entities (state, province) defined by appropriate governmental agencies.		
	3251		POSTAL IDENTIFICATION CODE	C	1 an..17
			Code specifying the postal zone or address.		
	3207		COUNTRY NAME CODE	C	1 an..3
			Identification of the name of the country or other geographical entity as specified in ISO 3166. 2 character ISO country code		



Group: CTA Segment Group 11: Contact Information
Position: 0500
Group: Segment Group 10 (Name and Address) Conditional (Optional)
Level: 2
Usage: Conditional (Optional)
Max Use: 9
Purpose: A segment to identify a person or department within a party.

Segment Summary

	Pos. No.	Seg. ID	Name	Req. Des.	Max. Use	Group: Repeat
M	0510	CTA	Contact Information	M	1	
	0520	COM	Communication Contact	C	9	



Segment: **CTA Contact Information**
Position: 0510 (Trigger Segment)
Group: Segment Group 11 (Contact Information) Conditional (Optional)
Level: 2
Usage: Mandatory
Max Use: 1
Purpose: A segment to identify a communication number of a person or department to whom communication should be directed.

Comments:

Notes:

Example Syntax:
CTA+IC+:Jennifer Rodriguez'

Data Element Summary

<u>Attributes</u>	<u>Data Element</u>	<u>Component Element</u>	<u>Name</u>			
	3139		CONTACT FUNCTION CODE	C	1	an..3
			Code specifying the function of a contact (e.g. department or person).			
			Supported values:			
		IC	Information contact			
			Department/person to contact for questions regarding transactions.			
		NT	Notification contact			
	C056		DEPARTMENT OR EMPLOYEE DETAILS	C	1	
			Code and/or name of a department or employee. Code preferred.			
X		3413	Department or employee identification	C		an..17
		3412	Department or employee	C		an..35
			The department or person within an organizational entity.			



Segment: **COM** Communication Contact
Position: 0520
Group: Segment Group 11 (Contact Information) Conditional (Optional)
Level: 3
Usage: Conditional (Optional)
Max Use: 9
Purpose: A group of segments to identify required documents.
Comments:
Notes:

```
Example Syntax:
COM+115713136700:TE'
```

Data Element Summary

<u>Attributes</u>	<u>Data Element</u>	<u>Component Element</u>	<u>Name</u>		
M	C076		COMMUNICATION CONTACT	M	3
			Communication number of a department or employee in a specified channel.		
M		3148	Communication number	M	an..512
			The communication number.		
M		3155	Communication number code qualifier	M	an..3
			Code qualifying the communication number.		

Supported values:

- EM Electronic mail
Exchange of mail by electronic means.
- FX Telefax
Device used for transmitting and reproducing fixed graphic material (as printing) by means of signals over telephone lines or other electronic transmission media.
- TE Telephone
Voice/data transmission by telephone.



Group: **CPI Segment Group 14: Charge Payment Instructions**
Position: 0590
Group: Segment Group 10 (Name and Address) Conditional (Optional)
Level: 2
Usage: Conditional (Optional)
Max Use: 9
Purpose: A segment to identify default charge methodology.

Segment Summary

	Pos. No.	Seg. ID	Name	Req. Des.	Max. Use	Group: Repeat
M	0600	CPI	Charge Payment Instructions	M	1	
	0630	LOC	Place/Location Identification	C	9	



Segment: **CPI Charge Payment Instructions**
Position: 0600 (Trigger Segment)
Group: Segment Group 14 (Charge Payment Instructions) Conditional (Optional)
Level: 2
Usage: Mandatory
Max Use: 1
Purpose: A segment to indicate a reference relating to the CPI segment, such as charge reference number.

Comments:

Notes: Example Syntax:

CPI+10++C'

Data Element Summary

<u>Attributes</u>	<u>Data Element</u>	<u>Component Element</u>	<u>Name</u>		
	C229		CHARGE CATEGORY	C	1
			Identification of a category or a zone of charges.		
M		5237	Charge category code	M	an..3
			Code specifying the category of charges.		
			Supported values:		
			2 Additional charges		
			Charges calculated by the carrier for specific events like re-weighting, re-loading, unexpected operations, services required during the voyage, etc.		
			4 Basic freight		
			The basic freight payable on the cargo as per tariff.		
			5 Destination haulage charges		
			Haulage charges for transporting goods to the destination.		
			7 Destination port charges		
			Charges payable at the port of destination.		
			10 Origin port charges		
			Charges payable at the port of origin.		
			11 Origin haulage charges		
			Haulage charges for the pickup of goods at origin.		
X		1131	Code list identification code	C	an..3
			Refer to D.99B Data Element Dictionary for acceptable code values.		
X		3055	Code list responsible agency code	C	an..3
			Refer to D.99B Data Element Dictionary for acceptable code values.		
X	C231		METHOD OF PAYMENT	C	1
			Code identifying the method of payment.		
X		4215	Transport charges payment method code	M	an..3
			Identification of method of payment for transport charges.		
			Refer to D.99B Data Element Dictionary for acceptable code values.		
X		1131	Code list identification code	C	an..3
			Identification of a code list.		
			Refer to D.99B Data Element Dictionary for acceptable code values.		
X		3055	Code list responsible agency code	C	an..3
			Code specifying the agency responsible for a code list.		
			Refer to D.99B Data Element Dictionary for acceptable code values.		
		4237	PREPAID/COLLECT INDICATOR, CODED	C	1 an..3
			Code indicating whether freight item amount is prepaid or to be collected.		



Supported values:

- | | |
|---|--|
| A | Payable elsewhere
Responsibility for payment of transport charges unknown at time of departure. |
| C | Collect
Charges are (to be) collected from the consignee at the destination. |
| P | Prepaid
Charges are (to be) prepaid before the transport actually leaves. |



Segment: **LOC** Place/Location Identification
Position: 0630
Group: Segment Group 14 (Charge Payment Instructions) Conditional (Optional)
Level: 3
Usage: Conditional (Optional)
Max Use: 9
Purpose: A segment to identify the monetary amount associated with the charges.

Comments:

Notes:

Example Syntax:

LOC+57+COBUN:181:6:BUENAVENTURA'

Data Element Summary

<u>Attributes</u>	<u>Data Element</u>	<u>Component Element</u>	<u>Name</u>			
M	3227		LOCATION FUNCTION CODE QUALIFIER	M	1	an..3
			Code identifying the function of a location.			
			Supported values:			
		57	Place of payment			
			Name of the location at which freight and charges for main transport are payable.			
	C517		LOCATION IDENTIFICATION	C	1	
			Identification of a location by code or name.			
		3225	Location name code	C		an..25
			Code specifying the name of the location.			
			UNLOCODE			
		1131	Code list identification code	C		an..3
			Identification of a code list.			
			Supported values:			
		181	Activity			
			Code identifying activities.			
		3055	Code list responsible agency code	C		an..3
			Code specifying the agency responsible for a code list.			
			Supported values:			
		6	UN/ECE (United Nations - Economic Commission for Europe)			
		86	Assigned by party originating the message			
			Codes assigned by the party originating the message.			
		3224	Location name	C		an..256
			Name of the location.			
	C519		RELATED LOCATION ONE IDENTIFICATION	C	1	
			Identification the first related location by code or name.			
		3223	Related place/location one identification	C		an..25
			Specification of the first related place/location by code.			
			2 character ISO country code			
		1131	Code list identification code	C		an..3
			Identification of a code list.			
			Supported values:			
		162	Country			
			Identification of a country.			
		3055	Code list responsible agency code	C		an..3



Code specifying the agency responsible for a code list.

Supported values:

		5	ISO (International Organization for Standardization)		
		3222	Related place/location one	C	an..70
			Specification of the first related place/location by name.		
X	C553		RELATED LOCATION TWO IDENTIFICATION	C	1
			Identification of second related location by code or name.		
X		3233	Related place/location two identification	C	an..25
			Specification of a second related place/location by code.		
X		1131	Code list identification code	C	an..3
			Identification of a code list.		
			Refer to D.99B Data Element Dictionary for acceptable code values.		
X		3055	Code list responsible agency code	C	an..3
			Code specifying the agency responsible for a code list.		
			Refer to D.99B Data Element Dictionary for acceptable code values.		
X		3232	Related place/location two	C	an..70
			Specification of a second related place/location by name.		
X	5479		RELATION, CODED	C	1 an..3



Group: **GID Segment Group 16: Goods Item Details**
Position: 0710
Group:
Level: 1
Usage: Conditional (Optional)
Max Use: 999
Purpose: A segment to identify a goods item for which transport is undertaken.

Segment Summary

	Pos. No.	Seg. ID	Name	Req. Des.	Max. Use	Group: Repeat
M	0720	GID	Goods Item Details	M	1	
	0790	PIA	Additional Product Id	C	9	
	0800	FTX	Free Text	C	9	
	0860		Segment Group 18: Measurements	C		99
	0890		Segment Group 19: Dimensions	C		99
	0920		Segment Group 20: Reference	C		9
	1080		Segment Group 25: Split Goods Placement	C		999
	1130		Segment Group 27: Dangerous Goods	C		99



		Supported values:	
		67	Type of package Indication of the type of package codes.
	3055	Code list responsible agency code	C an..3
		Code specifying the agency responsible for a code list.	
		Supported values:	
		6	UN/ECE (United Nations - Economic Commission for Europe)
	7064	Type of packages	C an..35
		Description of the form in which goods are presented.	
X	7233	Packaging related description code	C an..3
		Refer to D.99B Data Element Dictionary for acceptable code values.	
	C213	NUMBER AND TYPE OF PACKAGES	C 1
		Number and type of individual parts of a shipment.	
		Important note!	
		Used to indicate the Inner-inner package type and quantity	
	7224	Number of packages	C n..8
		Number of individual parts of a shipment either unpacked, or packed in such a way that they cannot be divided without first undoing the packing.	
	7065	Package type description code	C an..17
		Code specifying the type of package.	
	1131	Code list identification code	C an..3
		Identification of a code list.	
		Supported values:	
		67	Type of package Indication of the type of package codes.
	3055	Code list responsible agency code	C an..3
		Code specifying the agency responsible for a code list.	
		Supported values:	
		6	UN/ECE (United Nations - Economic Commission for Europe)
	7064	Type of packages	C an..35
		Description of the form in which goods are presented.	
X	7233	Packaging related description code	C an..3
		Refer to D.99B Data Element Dictionary for acceptable code values.	
X	C213	NUMBER AND TYPE OF PACKAGES	C 1
		Number and type of individual parts of a shipment.	
X	7224	Number of packages	C n..8
		Number of individual parts of a shipment either unpacked, or packed in such a way that they cannot be divided without first undoing the packing.	
X	7065	Package type description code	C an..17
		Code specifying the type of package.	
X	1131	Code list identification code	C an..3
		Identification of a code list.	
		Refer to D.99B Data Element Dictionary for acceptable code values.	
X	3055	Code list responsible agency code	C an..3
		Code specifying the agency responsible for a code list.	
		Refer to D.99B Data Element Dictionary for acceptable code values.	
X	7064	Type of packages	C an..35
		Description of the form in which goods are presented.	
X	7233	Packaging related description code	C an..3
		Code specifying information related to packaging.	



X	C213		Refer to D.99B Data Element Dictionary for acceptable code values. NUMBER AND TYPE OF PACKAGES	C	1
			Number and type of individual parts of a shipment.		
X		7224	Number of packages	C	n..8
			Number of individual parts of a shipment either unpacked, or packed in such a way that they cannot be divided without first undoing the packing.		
X		7065	Package type description code	C	an..17
			Code specifying the type of package.		
X		1131	Code list identification code	C	an..3
			Identification of a code list.		
			Refer to D.99B Data Element Dictionary for acceptable code values.		
X		3055	Code list responsible agency code	C	an..3
			Code specifying the agency responsible for a code list.		
			Refer to D.99B Data Element Dictionary for acceptable code values.		
X		7064	Type of packages	C	an..35
			Description of the form in which goods are presented.		
X		7233	Packaging related description code	C	an..3
			Code specifying information related to packaging.		
			Refer to D.99B Data Element Dictionary for acceptable code values.		



Segment: **PIA** Additional Product Id
Position: 0790
Group: Segment Group 16 (Goods Item Details) Conditional (Optional)
Level: 2
Usage: Conditional (Optional)
Max Use: 9
Purpose: A segment to specify processable supplementary information relating to the goods item.

Comments:

Notes: Example Syntax

PIA+5+CODE VALUE:HS'

Data Element Summary

<u>Attributes</u>	<u>Data Element</u>	<u>Component Element</u>	<u>Name</u>			
M	4347		PRODUCT ID. FUNCTION QUALIFIER Indication of the function of the product code. Supported values:	M	1	an..3
		5	Product identification			
M	C212		ITEM NUMBER IDENTIFICATION Goods identification for a specified source.	M	1	
		7140	Item number A number allocated to a group or item.	C		an..35
		7143	Item type identification code Code specifying an item code. Supported values:	C		an..3
		CG	Commodity grouping Code for a group of articles with common characteristics (e.g. used for statistical purposes).			
		HS	Harmonised system recommended by Hamburg Sud to use 6 character classification codes from the WCO			
X		1131	Code list identification code Refer to D.99B Data Element Dictionary for acceptable code values.	C		an..3
X		3055	Code list responsible agency code Refer to D.99B Data Element Dictionary for acceptable code values.	C		an..3
X	C212		ITEM NUMBER IDENTIFICATION Goods identification for a specified source.	C	1	
X		7140	Item number A number allocated to a group or item.	C		an..35
X		7143	Item type identification code Code specifying an item code. Refer to D.99B Data Element Dictionary for acceptable code values.	C		an..3
X		1131	Code list identification code Identification of a code list. Refer to D.99B Data Element Dictionary for acceptable code values.	C		an..3
X		3055	Code list responsible agency code Code specifying the agency responsible for a code list. Refer to D.99B Data Element Dictionary for acceptable code values.	C		an..3
X	C212		ITEM NUMBER IDENTIFICATION Goods identification for a specified source.	C	1	
X		7140	Item number	C		an..35



X		7143	<p>A number allocated to a group or item.</p> <p>Item type identification code</p> <p>Code specifying an item code.</p> <p>Refer to D.99B Data Element Dictionary for acceptable code values.</p>	C	an..3
X		1131	<p>Code list identification code</p> <p>Identification of a code list.</p> <p>Refer to D.99B Data Element Dictionary for acceptable code values.</p>	C	an..3
X		3055	<p>Code list responsible agency code</p> <p>Code specifying the agency responsible for a code list.</p> <p>Refer to D.99B Data Element Dictionary for acceptable code values.</p>	C	an..3
X	C212		<p>ITEM NUMBER IDENTIFICATION</p> <p>Goods identification for a specified source.</p>	C	1
X		7140	<p>Item number</p> <p>A number allocated to a group or item.</p>	C	an..35
X		7143	<p>Item type identification code</p> <p>Code specifying an item code.</p> <p>Refer to D.99B Data Element Dictionary for acceptable code values.</p>	C	an..3
X		1131	<p>Code list identification code</p> <p>Identification of a code list.</p> <p>Refer to D.99B Data Element Dictionary for acceptable code values.</p>	C	an..3
X		3055	<p>Code list responsible agency code</p> <p>Code specifying the agency responsible for a code list.</p> <p>Refer to D.99B Data Element Dictionary for acceptable code values.</p>	C	an..3
X	C212		<p>ITEM NUMBER IDENTIFICATION</p> <p>Goods identification for a specified source.</p>	C	1
X		7140	<p>Item number</p> <p>A number allocated to a group or item.</p>	C	an..35
X		7143	<p>Item type identification code</p> <p>Code specifying an item code.</p> <p>Refer to D.99B Data Element Dictionary for acceptable code values.</p>	C	an..3
X		1131	<p>Code list identification code</p> <p>Identification of a code list.</p> <p>Refer to D.99B Data Element Dictionary for acceptable code values.</p>	C	an..3
X		3055	<p>Code list responsible agency code</p> <p>Code specifying the agency responsible for a code list.</p> <p>Refer to D.99B Data Element Dictionary for acceptable code values.</p>	C	an..3



Segment: **FTX** Free Text
Position: 0800
Group: Segment Group 16 (Goods Item Details) Conditional (Optional)
Level: 2
Usage: Conditional (Optional)
Max Use: 9
Purpose: A segment to specify percentages related to cargo shipped in controlled atmosphere equipment such as percentage humidity.

Comments:

Notes:

Example Syntax:
FTX+AAA+++GOODS DESCRIPTION'

Data Element Summary

<u>Attributes</u>	<u>Data Element</u>	<u>Component Element</u>	<u>Name</u>			
M	4451		TEXT SUBJECT CODE QUALIFIER		M	1 an..3
			Code specifying the subject of the text.			
			Supported values:			
		AAA	Goods description [7002] Plain language description of the nature of the goods sufficient to identify them at the level required for banking, Customs, statistical or transport purposes, avoiding unnecessary detail (Generic term).			
		AAE	Acknowledgement description The content of an acknowledgement.			
X	4453		TEXT FUNCTION, CODED		C	1 an..3
			Refer to D.99B Data Element Dictionary for acceptable code values.			
X	C107		TEXT REFERENCE		C	1
			Coded reference to a standard text and its source.			
X		4441	Free text value code		M	an..17
			Code specifying free form text.			
X		1131	Code list identification code		C	an..3
			Identification of a code list. Refer to D.99B Data Element Dictionary for acceptable code values.			
X		3055	Code list responsible agency code		C	an..3
			Code specifying the agency responsible for a code list. Refer to D.99B Data Element Dictionary for acceptable code values.			
	C108		TEXT LITERAL		C	1
			Free text; one to five lines.			
M		4440	Free text value		M	an..512
			Free form text.			
X		4440	Free text value		C	an..512
X		4440	Free text value		C	an..512
X		4440	Free text value		C	an..512
X		4440	Free text value		C	an..512
X	3453		LANGUAGE NAME CODE		C	1 an..3
X	4447		TEXT FORMATTING, CODED		C	1 an..3
			Refer to D.99B Data Element Dictionary for acceptable code values.			



Group: **MEA** Segment Group 18: Measurements
Position: 0860
Group: Segment Group 16 (Goods Item Details) Conditional (Optional)
Level: 2
Usage: Conditional (Optional)
Max Use: 99
Purpose: A segment to specify measurements, other than dimensions, applicable to a goods item.

Segment Summary

	<u>Pos. No.</u>	<u>Seg. ID</u>	<u>Name</u>	<u>Req. Des.</u>	<u>Max. Use</u>	<u>Group: Repeat</u>
M	0870	MEA	Measurements	M	1	



Segment: **MEA Measurements**
Position: 0870 (Trigger Segment)
Group: Segment Group 18 (Measurements) Conditional (Optional)
Level: 2
Usage: Mandatory
Max Use: 1
Purpose: A segment to specify the number of equipment units to each of which the given measurement applies.

Comments:

Notes:

Example Syntax:
 MEA+AAE+G+KGM:77000.00'

Data Element Summary

<u>Attributes</u>	<u>Data Element</u>	<u>Component Element</u>	<u>Name</u>			
M	6311		MEASUREMENT ATTRIBUTE CODE Code specifying the measurement attribute. Supported values:	M	1	an..3
			AAE Measurement [6314] Value of the measured unit.			
	C502		MEASUREMENT DETAILS Identification of measurement type.	C	1	
		6313	Measured attribute code Code specifying the attribute measured. Supported values:	C		an..3
			AAW Gross volume The observed volume unadjusted for factors such as temperature or gravity.			
			G Gross weight [6292] Weight (mass) of goods including packing but excluding the carrier's equipment.			
			WT Weight [6150] Numeric value of weight.			
X		6321	Measurement significance, coded Refer to D.99B Data Element Dictionary for acceptable code values.	C		an..3
X		6155	Non-discrete measurement name code Refer to D.99B Data Element Dictionary for acceptable code values.	C		an..17
X		6154	Non-discrete measurement name	C		an..70
	C174		VALUE/RANGE Measurement value and relevant minimum and maximum values of the measurement range.	C	1	
M		6411	Measurement unit code Code specifying the unit of measurement. Supported values:	M		an..3
			FTQ Cubic feet			
			KGM Kilograms			
			LBR Pounds			
			MTQ Cubic meters			
		6314	Measurement value Value of the measured unit.	C		an..18
X		6162	Range minimum	C		n..18



X		6152	Range maximum	C	n..18
X		6432	Significant digits	C	n..2
X	7383		SURFACE/LAYER CODE	C	1 an..3

Refer to D.99B Data Element Dictionary for acceptable code values.



Group: DIM Segment Group 19: Dimensions
Position: 0890
Group: Segment Group 16 (Goods Item Details) Conditional (Optional)
Level: 2
Usage: Conditional (Optional)
Max Use: 99
Purpose: To specify dimensions applicable to a goods item.

Segment Summary

	Pos. No.	Seg. ID	Name	Req. Des.	Max. Use	Group: Repeat
M	0900	DIM	Dimensions	M		1



Segment: **DIM Dimensions**
Position: 0900 (Trigger Segment)
Group: Segment Group 19 (Dimensions) Conditional (Optional)
Level: 2
Usage: Mandatory
Max Use: 1
Purpose: A segment to specify the number of equipment units to each of which the given dimension applies.

Comments:

Notes:

Example Syntax:
DIM+2+MTR:16.764:12.192:6.096'

Data Element Summary

<u>Attributes</u>	<u>Data Element</u>	<u>Component Element</u>	<u>Name</u>			
M	6145		DIMENSION QUALIFIER	M	1	an..3
			To specify the dimensions applicable to each of the transportable units.			
			Supported values:			
		2	Package dimensions (including goods)			
			The dimension of the goods including the packaging.			
M	C211		DIMENSIONS	M	1	
			Specification of the dimensions of a transportable unit.			
M		6411	Measurement unit code	M		an..3
			Code specifying the unit of measurement.			
			Supported values:			
		FET	Feet			
		MTR	Meter			
		6168	Length dimension	C		n..15
			Length of pieces or packages stated for transport purposes.			
		6140	Width dimension	C		n..15
			Width of pieces or packages stated for transport purposes.			
		6008	Height dimension	C		n..15
			Height of pieces or packages stated for transport purposes.			



Group: **RFF** Segment Group 20: Reference
Position: 0920
Group: Segment Group 16 (Goods Item Details) Conditional (Optional)
Level: 2
Usage: Conditional (Optional)
Max Use: 9
Purpose: A segment to identify a reference to a goods item.

Segment Summary

	Pos. No.	Seg. ID	Name	Req. Des.	Max. Use	Group: Repeat
M	0930	RFF	Reference	M	1	



Segment: **RFF Reference**
Position: 0930 (Trigger Segment)
Group: Segment Group 20 (Reference) Conditional (Optional)
Level: 2
Usage: Mandatory
Max Use: 1
Purpose: A segment to indicate date and time relating to the reference.

Comments:

Notes:

Example Syntax:
RFF+EX:EXPORT REF NO'

Data Element Summary

<u>Attributes</u>	<u>Data Element</u>	<u>Component Element</u>	<u>Name</u>		
M	C506		REFERENCE Identification of a reference.	M	1
M		1153	Reference function code qualifier Code giving specific meaning to a reference segment or a reference number. Supported values:	M	an..3
			AFG Tariff number		
			AGB Contract party reference number Reference number assigned to a party for a particular contract.		
			AGE Agent's reference Reference number of the agent.		
			AKG Vehicle Identification Number (VIN) The identification number which uniquely distinguishes one vehicle from another through the lifespan of the vehicle.		
			ANT Consignee's reference Reference number of the consignee.		
			BN Booking reference number [1016] Reference number assigned by the carrier or his agent when cargo space is reserved prior to loading.		
			CT Contract number Reference number of a contract concluded between parties.		
			EX Export licence number [1208] Reference number assigned by issuing authority to an Export Licence.		
			FF Freight forwarder's reference number [1460] Reference number assigned to the consignment by the freight forwarder.		
			LI Line item reference number (1156) Reference number identifying a particular line in a document.		
			ON Order number (purchase) [1022] Reference number assigned by the buyer to an order.		
			SI SID (Shipper's identifying number for shipment) Description to be provided.		
		1154	Reference identifier	C	an..35



		Identifies a reference.		
X	1156	Line number	C	an..6
X	4000	Reference version identifier	C	an..35
X	1060	Revision number	C	an..6



Group: **SGP** Segment Group 25: Split Goods Placement
Position: 1080
Group: Segment Group 16 (Goods Item Details) Conditional (Optional)
Level: 2
Usage: Conditional (Optional)
Max Use: 999
Purpose: A segment to identify the equipment in which goods are transported.

Segment Summary

	<u>Pos. No.</u>	<u>Seg. ID</u>	<u>Name</u>	<u>Req. Des.</u>	<u>Max. Use</u>	<u>Group: Repeat</u>
M	1090	SGP	Split Goods Placement	M		1
	1100		Segment Group 26: Measurements	C		9



Segment: **SGP Split Goods Placement**
Position: 1090 (Trigger Segment)
Group: Segment Group 25 (Split Goods Placement) Conditional (Optional)
Level: 2
Usage: Mandatory
Max Use: 1
Purpose: A group of segments to identify measurements.
Comments:
Notes:

Example Syntax:
SGP+01+24

Data Element Summary

<u>Attributes</u>	<u>Data Element</u>	<u>Component Element</u>	<u>Name</u>		
M	C237		EQUIPMENT IDENTIFICATION	M	1
			Marks (letters/numbers) identifying equipment.		
		8260	Equipment identification number	C	an..17
			Marks (letters and/or numbers) which identify equipment e.g. unit load device. Container number		
X		1131	Code list identification code	C	an..3
			Refer to D.99B Data Element Dictionary for acceptable code values.		
X		3055	Code list responsible agency code	C	an..3
			Refer to D.99B Data Element Dictionary for acceptable code values.		
X		3207	Country name code	C	an..3
	7224		NUMBER OF PACKAGES	C	1 n..8
			Number of individual parts of a shipment either unpacked, or packed in such a way that they cannot be divided without first undoing the packing. Number of outer packages in the container (must be a valid whole number with no decimal or commas)		



Group: **MEA** Segment Group 26: Measurements
Position: 1100
Group: Segment Group 25 (Split Goods Placement) Conditional (Optional)
Level: 3
Usage: Conditional (Optional)
Max Use: 9
Purpose: A segment to specify measurements of that portion of the goods item in the equipment.

Segment Summary

	Pos. No.	Seg. ID	Name	Req. Des.	Max. Use	Group: Repeat
M	1110	MEA	Measurements	M		1



Segment: **MEA Measurements**
Position: 1110 (Trigger Segment)
Group: Segment Group 26 (Measurements) Conditional (Optional)
Level: 3
Usage: Mandatory
Max Use: 1
Purpose: A segment to specify the number of equipment units to each of which the given measurement applies.

Comments:

Notes:

Example Syntax:
 MEA+AAE+G+KGM:77000.00'

Data Element Summary

<u>Attributes</u>	<u>Data Element</u>	<u>Component Element</u>	<u>Name</u>			
M	6311		MEASUREMENT ATTRIBUTE CODE Code specifying the measurement attribute. Supported values:	M	1	an..3
			AAE Measurement [6314] Value of the measured unit.			
	C502		MEASUREMENT DETAILS Identification of measurement type.	C	1	
		6313	Measured attribute code Code specifying the attribute measured. Supported values:	C		an..3
			G Gross weight [6292] Weight (mass) of goods including packing but excluding the carrier's equipment.			
			WT Weight [6150] Numeric value of weight.			
X		6321	Measurement significance, coded Refer to D.99B Data Element Dictionary for acceptable code values.	C		an..3
X		6155	Non-discrete measurement name code Refer to D.99B Data Element Dictionary for acceptable code values.	C		an..17
X		6154	Non-discrete measurement name	C		an..70
	C174		VALUE/RANGE Measurement value and relevant minimum and maximum values of the measurement range.	C	1	
M		6411	Measurement unit code Code specifying the unit of measurement. Supported values:	M		an..3
			KGM Kilograms LBR Pounds			
		6314	Measurement value Value of the measured unit.	C		an..18
X		6162	Range minimum	C		n..18
X		6152	Range maximum	C		n..18
X		6432	Significant digits	C		n..2
X	7383		SURFACE/LAYER CODE Refer to D.99B Data Element Dictionary for acceptable code values.	C	1	an..3



Group: **DGS Segment Group 27: Dangerous Goods**
Position: 1130
Group: Segment Group 16 (Goods Item Details) Conditional (Optional)
Level: 2
Usage: Conditional (Optional)
Max Use: 99
Purpose: A segment to indicate the class of dangerous goods, packing group, etc.

Segment Summary

	Pos. No.	Seg. ID	Name	Req. Des.	Max. Use	Group: Repeat
M	1140	DGS	Dangerous Goods	M	1	
	1150	FTX	Free Text	C	99	
	1160		Segment Group 28: Contact Information	C		9
	1190		Segment Group 29: Measurements	C		9

Segment: **DGS Dangerous Goods**
Position: 1140 (Trigger Segment)
Group: Segment Group 27 (Dangerous Goods) Conditional (Optional)
Level: 2
Usage: Mandatory
Max Use: 1
Purpose: A segment to specify the dangerous goods technical name and to specify any additional dangerous goods information.

Comments:

Notes:

Example Syntax:

DGS+IMD+3.2:23-2:003+4056+43.3:CEL+2+EMSNBR++345++1.2:3.1'

Data Element Summary

<u>Attributes</u>	<u>Data Element</u>	<u>Component Element</u>	<u>Name</u>			
	8273		DANGEROUS GOODS REGULATIONS CODE	C	1	an..3
			Code specifying a dangerous goods regulation.			
			Supported values:			
		IMD	IMO IMDG code			
			Regulations regarding the transportation of dangerous goods on ocean-going vessels issued by the International Maritime Organization.			
	C205		HAZARD CODE	C	1	
			The identification of the dangerous goods in code.			
M		8351	Hazard code identification	M		an..7
			Dangerous goods code.			
		8078	Hazard substance/item/page number	C		an..7
			Number giving additional hazard code classification of a goods item within the applicable dangerous goods regulation.			
		8092	Hazard code version number	C		an..10
			The version/revision number of date of issuance of the code used.			
M	C234		UNDG INFORMATION	M	1	
			Information on dangerous goods, taken from the United Nations Dangerous Goods classification.			
M		7124	UNDG number	M		n4
			Unique serial number assigned within the United Nations to substances and articles contained in a list of the dangerous goods most commonly carried.			
			This element is mandatory			
X		7088	Dangerous goods flashpoint	C		an..8
	C223		DANGEROUS GOODS SHIPMENT FLASHPOINT	C	1	
			Temperature at which a vapor can be ignited as per ISO 1523/73.			
		7106	Shipment flashpoint	C		n3
			Temperature in centigrade determined by the closed cup test as per ISO 1523/73 where a vapour is given off that can be ignited.			
		6411	Measurement unit code	C		an..3
			Code specifying the unit of measurement.			
			Supported values:			
		CEL	Celsius			
		FAH	Fahrenheit			
	8339		PACKING GROUP, CODED	C	1	an..3
			Identification of a packing group by code.			
			Accepted values			



		1	Great danger Packaging meeting criteria to pack hazardous materials with great danger. Group I according to IATA/IMDG/ADR/RID regulations.		
		2	Medium danger Packaging meeting criteria to pack hazardous materials with medium danger. Group II according to IATA/IMDG/ADR/RID regulations.		
		3	Minor danger Packaging meeting criteria to pack hazardous materials with minor danger. Group III according to IATA/IMDG/ADR/RID regulations.		
	8364	EMS NUMBER	Emergency procedures for ships carrying dangerous goods.	C	1 an..6
X	8410	MFAG		C	1 an..4
	8126	TREM CARD NUMBER	The identification of a transport emergency card giving advice for emergency actions.	C	1 an..10
X	C235	HAZARD IDENTIFICATION PLACARD DETAILS	These numbers appear on the hazard identification placard required on the means of transport.	C	1
X		8158 Hazard identification number, upper part	The id. number for the Orange Placard (upper part) required on the means of transport.	C	an..4
X		8186 Substance identification number, lower part	The number for the Orange Placard (lower part) required on the means of transport.	C	an4
	C236	DANGEROUS GOODS LABEL	Markings identifying the type of hazardous goods and similar information.	C	1
		8246 Dangerous goods label marking	Marking identifying the type of hazardous goods (substance), Loading/Unloading instructions and advising actions in case of emergency. 2nd IMO code	C	an..4
		8246 Dangerous goods label marking	Used if more than one IMO class applies to the dangerous commodity	C	an..4
		8246 Dangerous goods label marking	Marking identifying the type of hazardous goods (substance), Loading/Unloading instructions and advising actions in case of emergency. 3rd IMO code	C	an..4
X		8246 Dangerous goods label marking	Used if more than two IMO classes apply to the dangerous commodity	C	an..4
X	8255	PACKING INSTRUCTION, CODED		C	1 an..3
X	8325	CATEGORY OF MEANS OF TRANSPORT, CODED	Refer to D.99B Data Element Dictionary for acceptable code values.	C	1 an..3
X	8211	PERMISSION FOR TRANSPORT, CODED		C	1 an..3



Segment: **FTX** Free Text
Position: 1150
Group: Segment Group 27 (Dangerous Goods) Conditional (Optional)
Level: 3
Usage: Conditional (Optional)
Max Use: 99
Purpose: A group of segments to identify a contact to whom communication regarding the dangerous goods can be directed.

Comments:

Notes:

Example Syntax:

FTX+AAD++PSN+PROPER DANGEROUS SHIPPING NAME'

Data Element Summary

<u>Attributes</u>	<u>Data Element</u>	<u>Component Element</u>	<u>Name</u>			
M	4451		TEXT SUBJECT CODE QUALIFIER	M	1	an..3
			Code specifying the subject of the text.			
			Supported values:			
			AAC			Dangerous goods additional information Additional information concerning dangerous goods.
			AAD			Dangerous goods, technical name Proper shipping name, supplemented as necessary with the correct technical name, by which a dangerous substance or article may be correctly identified or which is sufficiently informative to permit identification by reference to generally available literature.
			AEP			Radioactive goods, additional information Additional information related to radioactive goods.
			HAN			Handling instructions [4078] Instructions on how specified goods, packages or containers should be handled.
			HAZ			Hazard information Information pertaining to a hazard.
X	4453		TEXT FUNCTION, CODED	C	1	an..3
			Refer to D.99B Data Element Dictionary for acceptable code values.			
	C107		TEXT REFERENCE	C	1	
			Coded reference to a standard text and its source.			
M		4441	Free text value code	M		an..17
			Code specifying free form text.			
			Supported values:			
			4			Empty Use only when qualifier 4451 = HAN
			GAS			Gas Use only when qualifier 4451 = AAC
			IHL			Inhalant hazard Use only when qualifier 4451 = AAC
			LQD			Liquid Use only when qualifier 4451 = AAC
			NP			Non-marine pollutant Use only when qualifier 4451 = AAC
			P			Marine pollutant



			Use only when qualifier 4451 = AAC		
		PP	Severe marine pollutant		
			Use only when qualifier 4451 = AAC		
		SLD	Solid		
			Use only when qualifier 4451 = AAC		
		TLQ	Limited transport of DG		
			Use only when qualifier 4451 = AAD		
		TN	DG technical name		
			Use only when qualifier 4451 = AAD		
X		1131	Code list identification code	C	an..3
		122	Commodity (7357) Code identifying types of goods for Customs, transport or statistical purposes (generic term).		
		183	Dangerous goods packing type Identification of package types for the description related to dangerous goods.		
X		3055	Code list responsible agency code	C	an..3
			Refer to D.99B Data Element Dictionary for acceptable code values.		
	C108		TEXT LITERAL	C	1
			Free text; one to five lines.		
M		4440	Free text value	M	an..512
			Free form text.		
			This element must be populated when ----- A) Text Subject Code Qualifier (4451) = AEP, HAZ, or REG. B) Text Subject Code Qualifier (4451) = AAC and Free Text Value Code (C107, 4441) is not populated. C) Text Subject Code Qualifier (4451) = AAD and Free Text Value Code (C107, 4441) = PSN or TN.		
			This element must NOT be populated when ----- A) Text Subject Code Qualifier(4451) = HAN or PKG. B) Text Subject Code Qualifier(4451) = AAC and Free Text Value Code (C107, 4441) is populated. C) Text Subject Code Qualifier(4451) I AAD and Free Text Value Code (C107, 4441) = TLQ.		
		4440	Free text value	C	an..512
			Free form text.		
			This element may be populated when ----- A) Text Subject Code Qualifier (4451) = AEP, HAZ, or REG. B) Text Subject Code Qualifier (4451) = AAC and Free Text Value Code (C107, 4441) is not populated.		
			This element must NOT be populated when ----- A) Text Subject Code Qualifier (4451) = AAC, HAN or PKG and Text Value Code (C107, 4441) is populated. B) Text Subject Code Qualifier(4451) I AAD and Text Value Code (C107, 4441) = TLQ.		
		4440	Free text value	C	an..512
			Free form text.		
			This element may be populated when ----- A) Text Subject Code Qualifier (4451) = AEP, HAZ, or REG.		



B) Text Subject Code Qualifier (4451) = AAC and Free Text Value Code (C107, 4441) is not populated.

This element must NOT be populated when

 A) Text Subject Code Qualifier (4451) = AAC, HAN or PKG and Text Value Code (C107, 4441) is populated.

B) Text Subject Code Qualifier(4451) | AAD and Text Value Code (C107, 4441) = TLQ.

X		4440	Free text value	C	an..512
X		4440	Free text value	C	an..512
X	3453		LANGUAGE NAME CODE	C	1 an..3
X	4447		TEXT FORMATTING, CODED	C	1 an..3

Refer to D.99B Data Element Dictionary for acceptable code values.



Group: CTA Segment Group 28: Contact Information
Position: 1160
Group: Segment Group 27 (Dangerous Goods) Conditional (Optional)
Level: 3
Usage: Conditional (Optional)
Max Use: 9
Purpose: A segment to identify a person or department.

Segment Summary

	Pos. No.	Seg. ID	Name	Req. Des.	Max. Use	Group: Repeat
M	1170	CTA	Contact Information	M		1
M	1180	COM	Communication Contact	M		9



Segment: **CTA Contact Information**
Position: 1170 (Trigger Segment)
Group: Segment Group 28 (Contact Information) Conditional (Optional)
Level: 3
Usage: Mandatory
Max Use: 1
Purpose: A segment to identify a communication number of a person or department.

Comments:

Notes:

Example Syntax:

CTA+HE+:Jennifer Rodriguez'

Data Element Summary

<u>Attributes</u>	<u>Data Element</u>	<u>Component Element</u>	<u>Name</u>			
M	3139		CONTACT FUNCTION CODE	M	1	an..3
			Code specifying the function of a contact (e.g. department or person).			
			Supported values:			
		HE	Emergency dangerous goods contact			
			Party who is to be contacted to intervene in case of emergency.			
M	C056		DEPARTMENT OR EMPLOYEE DETAILS	M	1	
			Code and/or name of a department or employee. Code preferred.			
X		3413	Department or employee identification	C		an..17
M		3412	Department or employee	M		an..35
			The department or person within an organizational entity.			
			Emergency contact name			



Segment: **COM** Communication Contact
Position: 1180
Group: Segment Group 28 (Contact Information) Conditional (Optional)
Level: 4
Usage: Mandatory
Max Use: 9
Purpose: A group of segments to identify dangerous goods measurements.
Comments:
Notes:

```

Example Syntax:
COM+115713136700:TE'
  
```

Data Element Summary

<u>Attributes</u>	<u>Data Element</u>	<u>Component Element</u>	<u>Name</u>		
M	C076		COMMUNICATION CONTACT	M	3
			Communication number of a department or employee in a specified channel.		
M		3148	Communication number	M	an..512
			The communication number.		
M		3155	Communication number code qualifier	M	an..3
			Code qualifying the communication number.		
Supported values:					
			TE	Telephone	
				Voice/data transmission by telephone.	



Group: **MEA Segment Group 29: Measurements**
Position: 1190
Group: Segment Group 27 (Dangerous Goods) Conditional (Optional)
Level: 3
Usage: Conditional (Optional)
Max Use: 9
Purpose: A segment to specify measurements of the dangerous goods.

Segment Summary

	Pos.	Seg.		Req.	Max.	Group:
	No.	ID	Name	Des.	Use	Repeat
M	1200	MEA	Measurements	M		1



Segment: **MEA Measurements**
Position: 1200 (Trigger Segment)
Group: Segment Group 29 (Measurements) Conditional (Optional)
Level: 3
Usage: Mandatory
Max Use: 1
Purpose: A segment to specify the number of equipment units to each of which the given measurement applies.

Comments:

Notes:

Example Syntax:

MEA+AAE+AAF+KGM:77000.00'

Data Element Summary

<u>Attributes</u>	<u>Data Element</u>	<u>Component Element</u>	<u>Name</u>			
M	6311		MEASUREMENT ATTRIBUTE CODE Code specifying the measurement attribute. Supported values:	M	1	an..3
			AAE Measurement [6314] Value of the measured unit.			
	C502		MEASUREMENT DETAILS Identification of measurement type.	C	1	
		6313	Measured attribute code Code specifying the attribute measured. Supported values:	C		an..3
			AAF Net net weight [6048] Weight (mass) of the goods themselves without any packing.			
			AAX Net volume The observed volume after adjustment for factors such as temperature or gravity.			
			AEO Radioactivity Activity of radioactive material.			
X		6321	Measurement significance, coded Refer to D.99B Data Element Dictionary for acceptable code values.	C		an..3
X		6155	Non-discrete measurement name code Refer to D.99B Data Element Dictionary for acceptable code values.	C		an..17
X		6154	Non-discrete measurement name	C		an..70
	C174		VALUE/RANGE Measurement value and relevant minimum and maximum values of the measurement range.	C	1	
M		6411	Measurement unit code Code specifying the unit of measurement. Supported values:	M		an..3
			FTQ Cubic feet			
			GAL Gallons			
			KGM Kilograms			
			LBR Pounds			
			LTR Liters			
			MBQ Mega Becquerels			
			MTQ Cubic meters			



		6314	Measurement value	C	an..18
			Value of the measured unit.		
X		6162	Range minimum	C	n..18
X		6152	Range maximum	C	n..18
X		6432	Significant digits	C	n..2
X	7383		SURFACE/LAYER CODE	C	1 an..3
			Refer to D.99B Data Element Dictionary for acceptable code values.		



Group: EQD Segment Group 32: Equipment Details
Position: 1270
Group:
Level: 1
Usage: Conditional (Optional)
Max Use: 999
Purpose: A segment to specify equipment, and equipment size and type used in the transport.

Segment Summary

	Pos. No.	Seg. ID	Name	Req. Des.	Max. Use	Group: Repeat
M	1280	EQD	Equipment Details	M	1	
	1290	EQN	Number of Units	C	1	
	1300	TMD	Transport Movement Details	C	1	
	1310	MEA	Measurements	C	9	
	1320	DIM	Dimensions	C	9	
	1340	HAN	Handling Instructions	C	1	
	1350	TMP	Temperature	C	1	
	1360	FTX	Free Text	C	9	
	1370	RFF	Reference	C	9	
	1380		Segment Group 33: Name and Address	C		9

Segment: EQD Equipment Details
Position: 1280 (Trigger Segment)
Group: Segment Group 32 (Equipment Details) Conditional (Optional)
Level: 1
Usage: Mandatory
Max Use: 1
Purpose: A segment to specify number of pieces of equipment required.
Comments:
Notes:

Example Syntax:
 EQD+CN++22G0:102:5+2++5'

Data Element Summary

<u>Attributes</u>	<u>Data Element</u>	<u>Component Element</u>	<u>Name</u>			
M	8053		EQUIPMENT TYPE CODE QUALIFIER	M	1	an..3
			Code qualifying a type of equipment.			
			Supported values:			
		CN	Container			
			Equipment item as defined by ISO for transport. It must be of: A) permanent character, strong enough for repeated use; B) designed to facilitate the carriage of goods, by one or more modes of transport, without intermediate reloading; C) fitted with devices for its ready handling, particularly.			
	C237		EQUIPMENT IDENTIFICATION	C	1	
			Marks (letters/numbers) identifying equipment.			
		8260	Equipment identification number	C		an..17
			Marks (letters and/or numbers) which identify equipment e.g. unit load device.			
X		1131	Code list identification code	C		an..3
			Refer to D.99B Data Element Dictionary for acceptable code values.			
X		3055	Code list responsible agency code	C		an..3
			Refer to D.99B Data Element Dictionary for acceptable code values.			
X		3207	Country name code	C		an..3
	C224		EQUIPMENT SIZE AND TYPE	C	1	
			Code and or name identifying size and type of equipment. Code preferred.			
		8155	Equipment size and type description code	C		an..10
			Code specifying the size and type of equipment.			
			ISO container group code			
			Refer to D.99B Data Element Dictionary for acceptable code values.			
X		1131	Code list identification code	C		an..3
			Refer to D.99B Data Element Dictionary for acceptable code values.			
X		3055	Code list responsible agency code	C		an..3
			Refer to D.99B Data Element Dictionary for acceptable code values.			
X		8154	Equipment size and type description	C		an..35
	8077		EQUIPMENT SUPPLIER, CODED	C	1	an..3
			To indicate the party that is the supplier of the equipment.			
			Supported values:			
		1	Shipper supplied			
			The transport equipment is supplied by the shipper.			
		2	Carrier supplied			
			The transport equipment is supplied by the carrier.			
X	8249		EQUIPMENT STATUS CODE	C	1	an..3



8169

Refer to D.99B Data Element Dictionary for acceptable code values.

FULL/EMPTY INDICATOR, CODED

C

1 an..3

To indicate the extent to which the equipment is full or empty.

Supported values:

4	Empty
5	Full



Segment: **EQN** Number of Units
Position: 1290
Group: Segment Group 32 (Equipment Details) Conditional (Optional)
Level: 2
Usage: Conditional (Optional)
Max Use: 1
Purpose: A segment to specify transport movement details for the equipment.
Comments:
Notes:

```

Example Syntax:
EQN+4:2'
  
```

Data Element Summary

<u>Attributes</u>	<u>Data Element</u>	<u>Component Element</u>	<u>Name</u>		
M	C523		NUMBER OF UNIT DETAILS Identification of number of units and its purpose.	M	1
		6350	Number of units Number of units of a certain type.	C	n..15
X		6353	Unit type code qualifier Refer to D.99B Data Element Dictionary for acceptable code values.	C	an..3



Segment: **TMD** Transport Movement Details
Position: 1300
Group: Segment Group 32 (Equipment Details) Conditional (Optional)
Level: 2
Usage: Conditional (Optional)
Max Use: 1
Purpose: A segment to specify measurements, other than dimensions, associated with the equipment, such as weight.

Comments:
Notes: Example Syntax:
 TMD+3++MM'

Data Element Summary

<u>Attributes</u>	<u>Data Element</u>	<u>Component Element</u>	<u>Name</u>		
	C219		MOVEMENT TYPE	C	1
			Description of type of service for movement of cargo.		
		8335	Movement type description code	C	an..3
			Code specifying a type of movement.		
			Supported values:		
			3 FCL/FCL		
			Defines the movement of cargo packed by the shipper or shipper's agent and unpacked by the consignee or consignee's agent. 'FCL' means Full Container Load.		
			4 FCL/LCL		
			Defines the movement of cargo packed by the shipper or shipper's agent and unpacked by the carrier. 'FCL' means Full Container Load. 'LCL' means Less than Container Load.		
X		8334	Movement type description	C	an..35
X	8332		EQUIPMENT PLAN	C	1 an..26
	8341		HAULAGE ARRANGEMENTS, CODED	C	1 an..3
			Specification of the type of equipment haulage arrangements.		
			Supported values:		
			CC Carrier haulage at export, Carrier haulage at import		
			CM Carrier haulage at export, Merchant haulage at import		
			MC Merchant haulage at export, Carrier haulage at import		
			MM Merchant haulage at export, Merchant haulage at import		



Segment: **MEA** Measurements
Position: 1310
Group: Segment Group 32 (Equipment Details) Conditional (Optional)
Level: 2
Usage: Conditional (Optional)
Max Use: 9
Purpose: A segment to specify dimensions applicable to equipment.
Comments:
Notes:

Example Syntax:
 MEA+AAE+AAL+KGM:77000.00'

Data Element Summary

<u>Attributes</u>	<u>Data Element</u>	<u>Component Element</u>	<u>Name</u>			
M	6311		MEASUREMENT ATTRIBUTE CODE Code specifying the measurement attribute. Supported values:	M	1	an..3
			AAE Measurement [6314] Value of the measured unit.			
	C502		MEASUREMENT DETAILS Identification of measurement type.	C	1	
		6313	Measured attribute code Code specifying the attribute measured. Supported values:	C		an..3
			AAL Net weight [6160] Weight (mass) of goods including any packing normally going with them to a buyer in a retail sale.			
			AAO Humidity			
			AAS Air flow			
			ZC Carbon			
			ZO Oxygen			
X		6321	Measurement significance, coded Refer to D.99B Data Element Dictionary for acceptable code values.	C		an..3
X		6155	Non-discrete measurement name code Refer to D.99B Data Element Dictionary for acceptable code values.	C		an..17
X		6154	Non-discrete measurement name	C		an..70
	C174		VALUE/RANGE Measurement value and relevant minimum and maximum values of the measurement range.	C	1	
M		6411	Measurement unit code Code specifying the unit of measurement. Supported values:	M		an..3
			CBM Cubic Meters per Hour			
			CFT Cubic Feet per Hour			
			KGM Kilograms			
			LBR Pounds			
		6314	Measurement value Value of the measured unit.	C		an..18
X		6162	Range minimum	C		n..18
X		6152	Range maximum	C		n..18
X		6432	Significant digits	C		n..2
X	7383		SURFACE/LAYER CODE	C	1	an..3



Refer to D.99B Data Element Dictionary for acceptable code values.



Segment: **DIM Dimensions**
Position: 1320
Group: Segment Group 32 (Equipment Details) Conditional (Optional)
Level: 2
Usage: Conditional (Optional)
Max Use: 9
Purpose: A segment to identify transport details for the equipment.
Comments:
Notes:

```

Example Syntax:
DIM+9+MTR:36.5:3.65:5.48'
  
```

Data Element Summary

<u>Attributes</u>	<u>Data Element</u>	<u>Component Element</u>	<u>Name</u>			
M	6145		DIMENSION QUALIFIER	M	1	an..3
			To specify the dimensions applicable to each of the transportable units.			
			Supported values:			
			9 Off-standard dimension general			
			The dimensions that the cargo exceeds the standard dimensions.			
M	C211		DIMENSIONS	M	1	
			Specification of the dimensions of a transportable unit.			
M		6411	Measurement unit code	M		an..3
			Code specifying the unit of measurement.			
			Supported values:			
			FET Feet			
			MTR Meter			
		6168	Length dimension	C		n..15
			Length of pieces or packages stated for transport purposes.			
		6140	Width dimension	C		n..15
			Width of pieces or packages stated for transport purposes.			
		6008	Height dimension	C		n..15
			Height of pieces or packages stated for transport purposes.			



Segment: **HAN Handling Instructions**
Position: 1340
Group: Segment Group 32 (Equipment Details) Conditional (Optional)
Level: 2
Usage: Conditional (Optional)
Max Use: 1
Purpose: A segment to specify a temperature setting for the equipment.
Comments:
Notes:

Example Syntax:
 HAN+NAR'

Data Element Summary

<u>Attributes</u>	<u>Data Element</u>	<u>Component Element</u>	<u>Name</u>		
	C524		HANDLING INSTRUCTIONS	C	1
			Instruction for the handling of goods, products or articles in shipment, storage etc.		
		4079	Handling instructions, coded	C	an..3
			Identification of the instructions on how specified goods, packages or containers should be handled.		
			Supported values:		
			NAR		Non-Active Reefer
					Indicates that a reefer container is to be moved without the refrigeration unit being activated.
X		1131	Code list identification code	C	an..3
			Refer to D.99B Data Element Dictionary for acceptable code values.		
X		3055	Code list responsible agency code	C	an..3
			Refer to D.99B Data Element Dictionary for acceptable code values.		
X		4078	Handling instructions	C	an..70
X	C218		HAZARDOUS MATERIAL	C	1
			To specify a hazardous material.		
X		7419	Hazardous material class code, identification	C	an..4
			Code specifying the kind of hazard for a material.		
X		1131	Code list identification code	C	an..3
			Identification of a code list.		
			Refer to D.99B Data Element Dictionary for acceptable code values.		
X		3055	Code list responsible agency code	C	an..3
			Code specifying the agency responsible for a code list.		
			Refer to D.99B Data Element Dictionary for acceptable code values.		
X		7418	Hazardous material class	C	an..35
			To specify the kind of hazard for a material.		



Segment: **TMP** Temperature
Position: 1350
Group: Segment Group 32 (Equipment Details) Conditional (Optional)
Level: 2
Usage: Conditional (Optional)
Max Use: 1
Purpose: A segment to specify processable supplementary information associated with the equipment.

Comments:

Notes: Example Syntax:

TMP+2+003:CEL'

Data Element Summary

<u>Attributes</u>	<u>Data Element</u>	<u>Component Element</u>	<u>Name</u>			
M	6245		TEMPERATURE QUALIFIER	M	1	an..3
			A code giving specific meaning to the temperature.			
			Supported values:			
		2	Transport temperature			
			The temperature at which cargo is to be kept while it is under transport.			
	C239		TEMPERATURE SETTING	C	1	
			The temperature under which the goods are (to be) stored or shipped.			
	6246		Temperature setting	C		n3
			The actual temperature value in degrees Celsius (e.g. 008, 020).			
	6411		Measurement unit code	C		an..3
			Code specifying the unit of measurement.			
			Supported values:			
		CEL	Celsius			
		FAH	Fahrenheit			



Segment: **FTX** Free Text
Position: 1360
Group: Segment Group 32 (Equipment Details) Conditional (Optional)
Level: 2
Usage: Conditional (Optional)
Max Use: 9
Purpose: A segment to specify a reference number to equipment.

Comments:

Notes:

Example Syntax:

FTX+AEB+++REEFER COMMENTS'

Data Element Summary

<u>Attributes</u>	<u>Data Element</u>	<u>Component Element</u>	<u>Name</u>			
M	4451		TEXT SUBJECT CODE QUALIFIER	M	1	an..3
			Code specifying the subject of the text.			
			Supported values:			
		AEB	Temperature control instructions Instruction regarding the temperature control of the cargo.			
		AGK	Equipment Description of equipment.			
		HAN	Handling instructions [4078] Instructions on how specified goods, packages or containers should be handled.			
		SSR	Special service request Request for a special service concerning the transport of the goods.			
X	4453		TEXT FUNCTION, CODED	C	1	an..3
			Refer to D.99B Data Element Dictionary for acceptable code values.			
	C107		TEXT REFERENCE	C	1	
			Coded reference to a standard text and its source.			
M		4441	Free text value code	M		an..17
			Code specifying free form text.			
			Supported values:			
		CCN	Canadian cargo control			
		CLN	Equipment must be cleaned			
		ECA	Equipment controlled atmosphere			
		FGE	Food grade equipment requested			
		FMG	Fumigation required			
		FRZ	Super freezer service			
		GEN	Genset requested			
		GOH	Garment on hanger			
		HUM	Humidity			
		ICP	Number of USD probes for ICT service			
		ICT	In transit cold sterilization			
		NTP	Number of temperature probes requested			
		SAD	Stow above deck			
		SBD	Stow below deck			
		SWP	Equipment must be swept			
		TVA	Temperature variance			



		UCN	UK unique consignment		
		VTC	Vent closed		
		VTO	Vent open		
X		1131	Code list identification code	C	an..3
			Refer to D.99B Data Element Dictionary for acceptable code values.		
X		3055	Code list responsible agency code	C	an..3
			Refer to D.99B Data Element Dictionary for acceptable code values.		
	C108		TEXT LITERAL	C	1
			Free text; one to five lines.		
M		4440	Free text value	M	an..512
			Free form text.		
X		4440	Free text value	C	an..512
X		4440	Free text value	C	an..512
X		4440	Free text value	C	an..512
X		4440	Free text value	C	an..512
X	3453		LANGUAGE NAME CODE	C	1 an..3
X	4447		TEXT FORMATTING, CODED	C	1 an..3
			Refer to D.99B Data Element Dictionary for acceptable code values.		



Segment: **RFF** Reference
Position: 1370
Group: Segment Group 32 (Equipment Details) Conditional (Optional)
Level: 2
Usage: Conditional (Optional)
Max Use: 9
Purpose: A group of segments to identify different equipment pick-up or drop-off places.
Comments:
Notes:

Example Syntax:
 RFF+ON:L922'

Data Element Summary

<u>Attributes</u>	<u>Data Element</u>	<u>Component Element</u>	<u>Name</u>		
M	C506		REFERENCE	M	1
			Identification of a reference.		
			Example Syntax:		
			RFF+ON+LG153-1'		
M		1153	Reference function code qualifier	M	an..3
			Code giving specific meaning to a reference segment or a reference number.		
			Supported values:		
			AEF		Customer process specification number
					Retrieval number for a process specification defined by customer.
			AFG		Tariff number
			AGB		Contract party reference number
					Reference number assigned to a party for a particular contract.
			AGE		Agent's reference
					Reference number of the agent.
			AKG		Vehicle Identification Number (VIN)
					The identification number which uniquely distinguishes one vehicle from another through the lifespan of the vehicle.
			ANT		Consignee's reference
					Reference number of the consignee.
			BN		Booking reference number
					[1016] Reference number assigned by the carrier or his agent when cargo space is reserved prior to loading.
			CT		Contract number
					Reference number of a contract concluded between parties.
			EX		Export licence number
					[1208] Reference number assigned by issuing authority to an Export Licence.
			FF		Freight forwarder's reference number
					[1460] Reference number assigned to the consignment by the freight forwarder.
			LI		Line item reference number
					(1156) Reference number identifying a particular line in a document.
			ON		Order number (purchase)



[1022] Reference number assigned by the buyer to an order.

SI

SID (Shipper's identifying number for shipment)
Description to be provided.

	1154	Reference identifier	C	an..35
		Identifies a reference.		
X	1156	Line number	C	an..6
X	4000	Reference version identifier	C	an..35
X	1060	Revision number	C	an..6



Group: **NAD** Segment Group 33: Name and Address
Position: 1380
Group: Segment Group 32 (Equipment Details) Conditional (Optional)
Level: 2
Usage: Conditional (Optional)
Max Use: 9
Purpose: A segment to specify a pick-up or drop-off address.

Segment Summary

	Pos. No.	Seg. ID	Name	Req. Des.	Max. Use	Group: Repeat
M	1390	NAD	Name and Address	M	1	
	1410		Segment Group 34: Contact Information	C	9	



Segment: **NAD** Name and Address
Position: 1390 (Trigger Segment)
Group: Segment Group 33 (Name and Address) Conditional (Optional)
Level: 2
Usage: Mandatory
Max Use: 1
Purpose: A segment to indicate date and time relating to pick-up or drop-off.

Comments:

Notes:

Example Syntax:

NAD+EV++SUPER FREEZER CORP:MAIN STREET 123, SPRINGFIELD'

Data Element Summary

<u>Attributes</u>	<u>Data Element</u>	<u>Component Element</u>	<u>Name</u>			
M	3035		PARTY FUNCTION CODE QUALIFIER	M	1	an..3
			Code giving specific meaning to a party.			
			Supported values:			
		EV	Subcontractor			
			Firm carrying out a part of the works for a contractor.			
X	C082		PARTY IDENTIFICATION DETAILS	C	1	
			Identification of a transaction party by code.			
X		3039	Party identifier	M		an..35
			Code specifying the identity of a party.			
X		1131	Code list identification code	C		an..3
			Identification of a code list.			
			Refer to D.99B Data Element Dictionary for acceptable code values.			
X		3055	Code list responsible agency code	C		an..3
			Code specifying the agency responsible for a code list.			
			Refer to D.99B Data Element Dictionary for acceptable code values.			
	C058		NAME AND ADDRESS	C	1	
			Unstructured name and address: one to five lines.			
M		3124	Name and address line	M		an..35
			Free form name and address description.			
		3124	Name and address line	C		an..35
			Free form name and address description.			
X		3124	Name and address line	C		an..35
X		3124	Name and address line	C		an..35
X		3124	Name and address line	C		an..35
X	C080		PARTY NAME	C	1	
			Identification of a transaction party by name, one to five lines. Party name may be formatted.			
X		3036	Party name	M		an..35
			Name of a party involved in a transaction.			
X		3036	Party name	C		an..35
			Name of a party involved in a transaction.			
X		3036	Party name	C		an..35
			Name of a party involved in a transaction.			
X		3036	Party name	C		an..35
			Name of a party involved in a transaction.			
X		3036	Party name	C		an..35
			Name of a party involved in a transaction.			



			Name of a party involved in a transaction.		
X		3045	Party name format code	C	an..3
			Code specifying the representation of a party name. Refer to D.99B Data Element Dictionary for acceptable code values.		
X	C059		STREET	C	1
			Street address and/or PO Box number in a structured address: one to four lines.		
X		3042	Street and number/p.o. box	M	an..35
			Street and number in plain language, or Post Office Box No.		
X		3042	Street and number/p.o. box	C	an..35
			Street and number in plain language, or Post Office Box No.		
X		3042	Street and number/p.o. box	C	an..35
			Street and number in plain language, or Post Office Box No.		
X		3042	Street and number/p.o. box	C	an..35
			Street and number in plain language, or Post Office Box No.		
X	3164		CITY NAME	C	1 an..35
X	C819		COUNTRY SUB-ENTITY DETAILS	C	1
			To specify a part of a country (eg county or part of a city).		
X		3229	Country sub-entity name code	C	an..9
			Identification of the name of sub-entities (state, province) defined by appropriate governmental agencies.		
X		1131	Code list identification code	C	an..3
			Identification of a code list.		
			Refer to D.99B Data Element Dictionary for acceptable code values.		
X		3055	Code list responsible agency code	C	an..3
			Code specifying the agency responsible for a code list.		
			Refer to D.99B Data Element Dictionary for acceptable code values.		
X		3228	Country sub-entity name	C	an..35
			Name of sub-entities (state, province) defined by appropriate governmental agencies.		
X	3251		POSTAL IDENTIFICATION CODE	C	1 an..17
X	3207		COUNTRY NAME CODE	C	1 an..3



Group: CTA Segment Group 34: Contact Information
Position: 1410
Group: Segment Group 33 (Name and Address) Conditional (Optional)
Level: 3
Usage: Conditional (Optional)
Max Use: 9
Purpose: A segment to specify a contact name associated with a specified equipment positioning or collection address.

Segment Summary

	<u>Pos. No.</u>	<u>Seg. ID</u>	<u>Name</u>	<u>Req. Des.</u>	<u>Max. Use</u>	<u>Group: Repeat</u>
M	1420	CTA	Contact Information	M	1	
	1430	COM	Communication Contact	C	9	



Segment: **CTA Contact Information**
Position: 1420 (Trigger Segment)
Group: Segment Group 34 (Contact Information) Conditional (Optional)
Level: 3
Usage: Mandatory
Max Use: 1
Purpose: A segment to specify a communication number related to the contact.

Comments:

Notes:

Example Syntax:
CTA++:Jennifer Rodriguez'

Data Element Summary

<u>Attributes</u>	<u>Data Element</u>	<u>Component Element</u>	<u>Name</u>			
X	3139		CONTACT FUNCTION CODE	C	1	an..3
			Refer to D.99B Data Element Dictionary for acceptable code values.			
	C056		DEPARTMENT OR EMPLOYEE DETAILS	C	1	
			Code and/or name of a department or employee. Code preferred.			
X		3413	Department or employee identification	C		an..17
		3412	Department or employee	C		an..35
			The department or person within an organizational entity.			



Segment: **COM** Communication Contact
Position: 1430
Group: Segment Group 34 (Contact Information) Conditional (Optional)
Level: 4
Usage: Conditional (Optional)
Max Use: 9
Purpose: A group of segments to specify dangerous goods.
Comments:
Notes:

```
Example Syntax:
COM+115713136700:TE'
```

Data Element Summary

<u>Attributes</u>	<u>Data Element</u>	<u>Component Element</u>	<u>Name</u>		
M	C076		COMMUNICATION CONTACT	M	3
			Communication number of a department or employee in a specified channel.		
M		3148	Communication number	M	an..512
			The communication number.		
M		3155	Communication number code qualifier	M	an..3
			Code qualifying the communication number.		
Supported values:					
			TE	Telephone	
				Voice/data transmission by telephone.	



Segment: **UNT** Message Trailer
Position: 1500
Group:
Level: 0
Usage: Mandatory
Max Use: 1
Purpose: To end and check the completeness of a Message
Comments:
Notes:

Example Syntax:
 UNT+23+123869'

Data Element Summary

<u>Attributes</u>	<u>Data Element</u>	<u>Component Element</u>	<u>Name</u>			
M	0074		NUMBER OF SEGMENTS IN A MESSAGE	M	1	n..6
			Control count of number of segments in a message.			
M	0062		MESSAGE REFERENCE NUMBER	M	1	an..14
			Unique message reference assigned by the sender.			



Segment: UNZ Interchange Trailer
Position: 1510
Group:
Level: 0
Usage: Mandatory
Max Use: 1
Purpose: To end and check the completeness of an interchange
Comments:
Notes:

Example Syntax:
 UNZ+1+125'

Data Element Summary

<u>Attributes</u>	<u>Data Element</u>	<u>Component Element</u>	<u>Name</u>			
M	0036		INTERCHANGE CONTROL COUNT	M	1	n..6
			Count either of the number of messages or, if used, of the number of functional groups in an interchange.			
M	0020		INTERCHANGE CONTROL REFERENCE	M	1	an..14
			Unique reference assigned by the sender to an interchange.			